

Terrier 3 TRV Tech Doc Revision 2 (05/06/2024)

Terrier 3 TRV BS EN215:2019

Technical Information

Terrier Decor TRV Overview

A thermostatic radiator valve thermal head, designed to work with current Terrier TRV valves of all patterns.

Range

1/2" x 15mm Angle TRV Valve

1/2" x 15mm Straight TRV Valve

Terrier 3

Nominated Flow Rates

1/2" x 15mm Angle TRV Valve Forward and Reverse Flow	190 Kg/h
--	----------

1/2" x 15mm Straight TRV Valve Forward and Reverse Flow	190 Kg/h
---	----------

Hysteresis

All product combinations	0.60 K
--------------------------	--------

Differential Pressure Influence

All product combinations	0.1 K
--------------------------	-------

Water Temperature Influence

All product combinations	1.1 K
--------------------------	-------

Response Time

All product combinations	20 mins
--------------------------	---------

Seat Authority

All product combinations	0.72
--------------------------	------

Control Accuracy

All product combinations	0.6 K
--------------------------	-------

Maximum Static Pressure

All product combinations

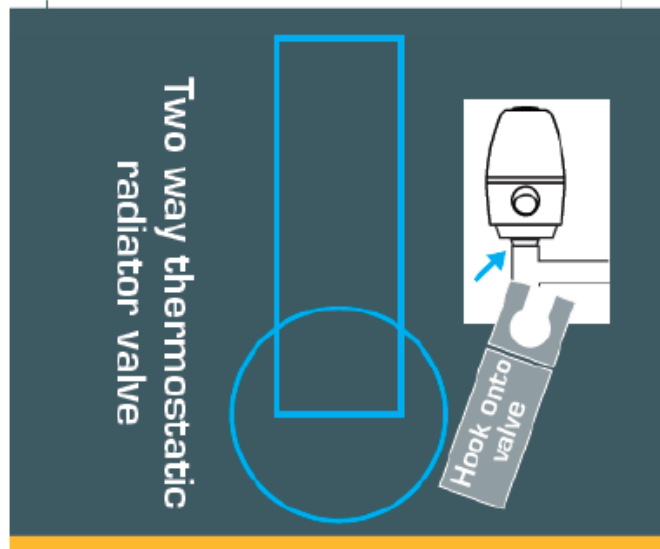
10 bar

Maximum Differential Pressure

All product combinations

0.6 bar

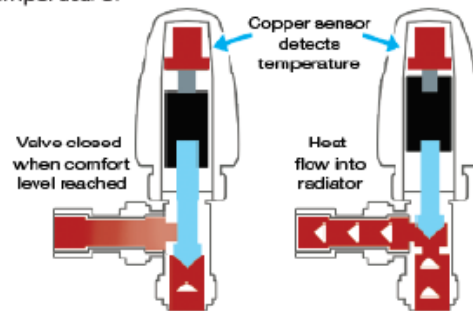
Instructions



Terrier

Getting the best out of your radiator valve

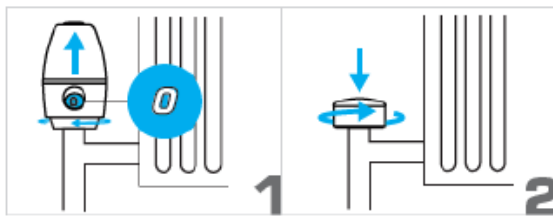
The terrier TRV is designed to react to temperature fluctuations and allow you to control individual room temperature.



Frost Protection

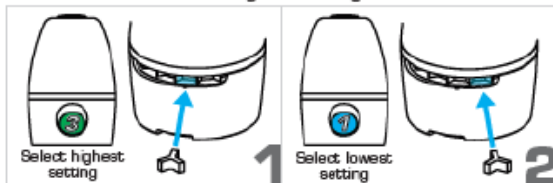
The TRV can be turned to the frost protection setting, which opens the valve when the temperature falls below 7°C to prevent freezing (boiler must remain in operation via a frost stat).

Removal of Radiator

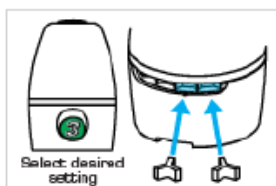


Limiting Pins

Range Limiting

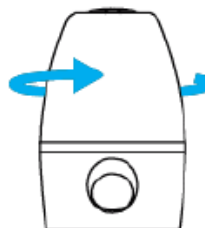


Fixed Set Temperature

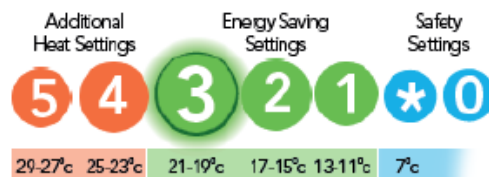


Call 0800 156 0010 to order free pins using the code 850888

Setting the TRV



Turn to adjust temperature setting and leave for at least 1 hour to allow the temperature to stabilise.





Getting the best
out of your
radiator valve

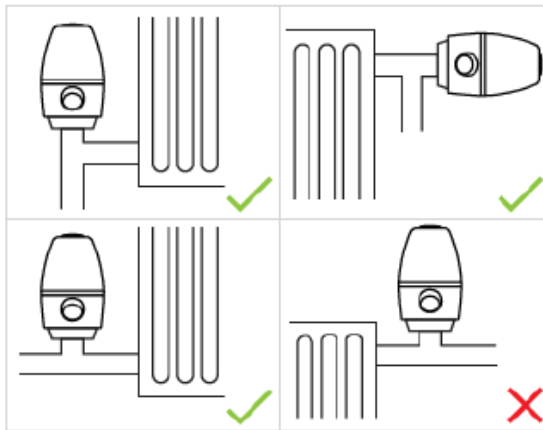


Pegler Yorkshire Group Limited
St. Catherine's Avenue, Doncaster,
South Yorkshire DN4 8DF
Tel: 0800 156 0050



Pegler Yorkshire

Installation Instructions



Correct Installation

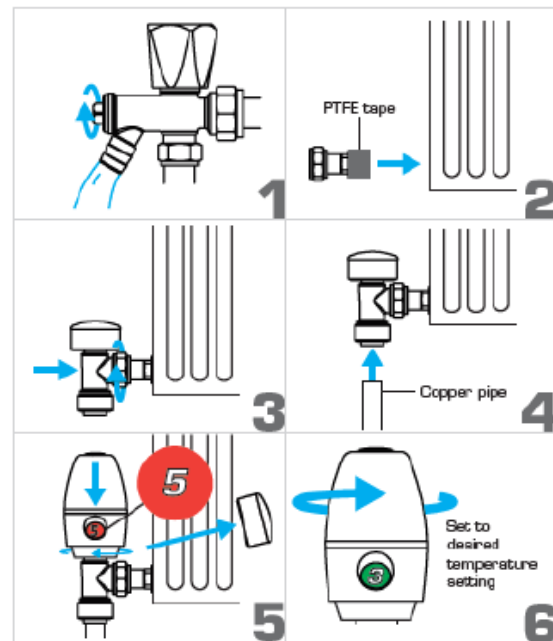
Maximum performance will be achieved if the thermostatic head is not concealed or exposed to direct sunlight or draughts.

Please Note

It is recommended that a differential pressure valve should be fitted to any system with TRVs (Pegler Yorkshire order code for differential pressure valve: 678021 for 22mm - larger sizes available), so the differential pressure does not exceed 0.2 bar and hydronic noise is avoided.

Fitting

Thoroughly clean any pipe work to be connected to the valve beforehand.



The water flow through the radiator must be set to the correct level when fitting a lock shield valve.

Temperature range	7°C - 28°C
Maximum test pressure	20 bar
Maximum static pressure	10 bar at 120°C
Maximum differential pressure	0.6 bar
Maximum water flow temperature	120°C

Angle & Straight Pattern TRV 15mm Forward and Reverse Flow

