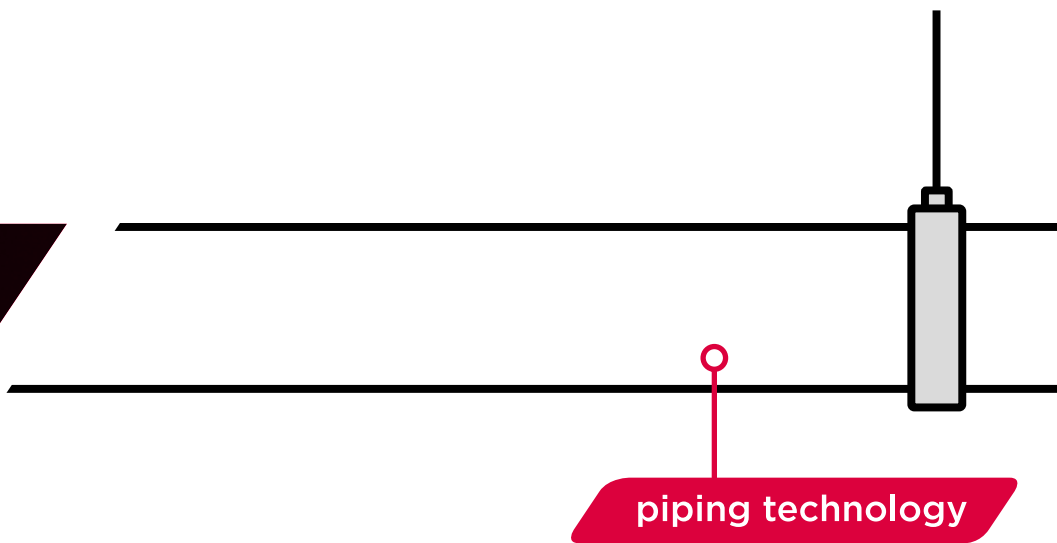


Seppelfricke SEPP-Eis®



Aalberts integrated piping systems

don't just buy
products,
buy solutions.



we are Aalberts integrated piping systems

Aalberts integrated piping systems engineers the most advanced integrated piping systems for the distribution and control of liquids and gases for key verticals, like industrial, utilities, commercial and residential. We offer fully integrated piping systems in valve, connection, fastening and piping technology. We work hand-in-hand with our customers to create the perfect integrated piping system, that meets their requirements. Our piping systems are easy to specify, install, control and maintain, saving important preparation and installation time. We meet the highest quality and industry standards needed in the selected verticals. We are the only business that truly offers its customers a single sourced and complete integrated piping solution, each and every time.

Don't just buy products, buy solutions.

our mission

With our integrated piping systems, supported by our unique Digital Design Service, we ensure that you will always get the best and easiest solution for the installation of an integrated piping system. From the moment that your plan is designed, you can get advice on complete and tailored solutions. With our Revit Plug-in you have digital access to the complete product offering within Aalberts integrated piping systems. This information is always accessible and up to date, allowing the design of an optimal and economically attractive installation that will meet all your demands. So whether the task is project conception, installation, or on-going maintenance, we are the company that truly delivers a complete system and service offering. Our know-how, our can-do attitude, and our relentless innovation come as standard. We will sweat the small stuff in our quest to find the perfect solutions, even if we have to invent them.

This is how we deliver excellence.

our way of working

We operate from various regions around the globe: America, EMEA and APAC. As we have multiple locations in many countries, we are always close to our customers. More than 3500 mission critical employees are persistent to offer the best integrated piping system. We work on our products, solutions and services every day. No matter how big the opportunity is, when we say we've got this, we won't let go until there is nothing left to learn. We improve ourselves by exchanging knowledge and experience to stay ahead of our competitors.

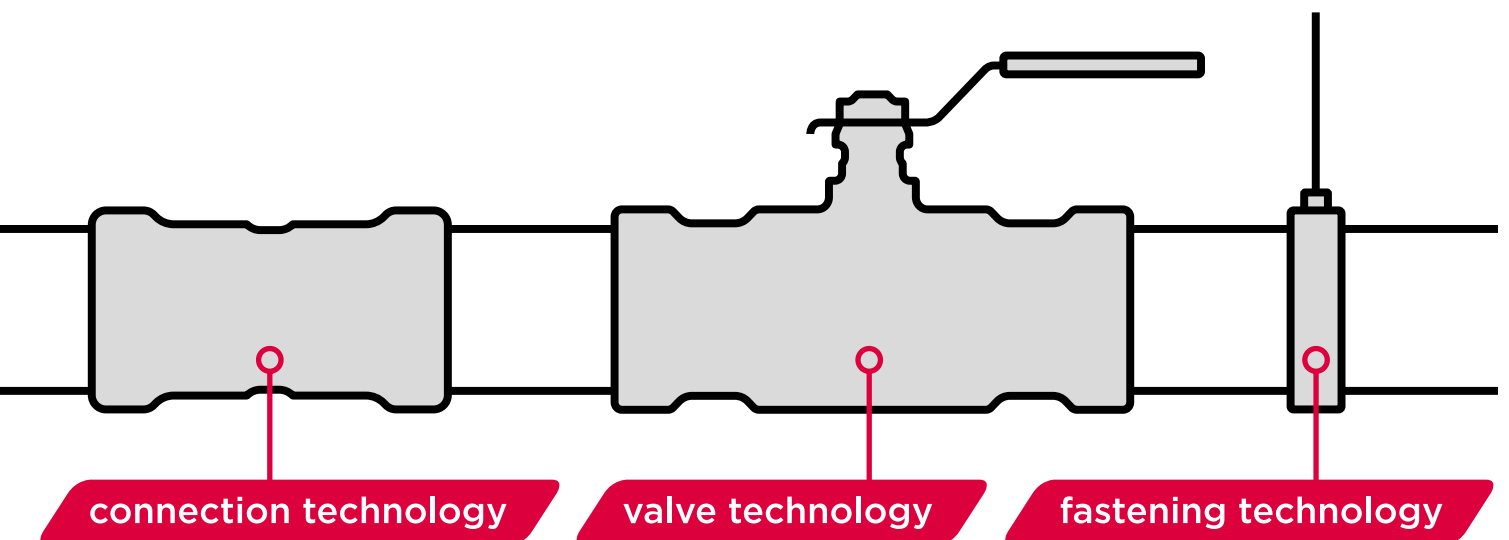
Good is never good enough.

With our sustainable spirit we contribute to circularity every single day. This belief is strongly linked to the way we do business. Rethink, reduce and recycle. We are entrepreneurial and take ownership in everything we do. We are convinced that self-development and diversity is essential.

The Aalberts way, winning with people.

the strength of Aalberts integrated piping systems

- the perfect solution for every project
- smart, fast and efficient installation
- valuable advice from the drawing board to delivery
- a very wide product range



Aalberts integrated piping systems connect: our systems are easy to combine with each other

Aalberts integrated piping systems is the combination of different companies with a strong legacy in their markets. The individual brands are well-known and each represents a long history. Together they offer the best integrated piping system for now and in the future.

Connection technology

VSH

VSH, today Aalberts integrated piping systems B.V., has been supplying quality products for 90 years and delivers piping systems and fittings throughout the world. In the 1970's VSH brought the well-known VSH Super compression fitting on the market which is still a best-seller, followed by the VSH XPress pressfitting, a technology that makes it possible to realize a connection even faster and more reliable.

Shurjoint

The history of Shurjoint dates back to 1974, when the founders produced their first grooved couplings. These first couplings were produced from malleable iron, the casting material of choice at this time. Shurjoint is recognized as a worldwide brand in the design and manufacture of mechanical piping components.

Valve technology

Pegler Valves

The Pegler brand is well known and respected as being one of the leading manufacturers of advanced plumbing, heating and engineering products in the world. It's a reputation earned through a total dedication to quality, innovation and customer service, which has been the hallmark of the company since the establishment in the 1890's. Today Pegler is a key brand in the valve industry, bringing a continuous flow of new products to the market, like the ProFlow. The ProFlow delivers an exceptional performance and accuracy throughout the entire range.

VSH PowerPress®



material	carbon steel
suitable for	thick-walled steel
connection	press / DW-profile
dimensions	½" - 2" (DN15 - DN50)

VSH Shurjoint



material	ductile iron / stainless steel
suitable for	thick-walled steel / stainless steel / HDPE
connection	groove
dimensions	½" - 104" (DN15 - DN2600)

Aalberts integrated piping systems range

We offer a series of product ranges that:

- connect seamlessly
- are available in dimensions from 6 mm up to 104" (DN2600)
- can be used for thick-walled pipe and thin-walled metal or plastic tube
- have press, compression, groove and push connections
- can be expanded with valves and accessories
- are BIM ready



Pegler Terrier



material	brass
suitable for	copper tube / multilayer tube (for push connections)
connection	push / threaded / compression
dimensions	8 - 15 mm

Pegler Valves



material	brass / bronze / carbon steel / stainless steel
suitable for	steel / carbon steel / stainless steel / copper
connection	threaded / press / push / flange
dimensions	DN15 - DN300

Pegler ProFlow



material	brass / ductile iron
suitable for	carbon steel / stainless steel / copper / plastic
connection	threaded / press / flange
dimensions	DN15 - DN300

VSH XPress



material	carbon steel / stainless steel / copper / cunifer
suitable for	carbon steel / stainless steel / copper / cunifer
connection	press / M-profile
dimensions	12 - 108 mm (DN10 - DN100)

VSH MultiPress



material	PPSU / brass
suitable for	plastic
connection	press / U & TH profile
dimensions	14 - 63 mm (DN10 - DN50)

VSH Tectite



material	copper / brass / stainless steel
suitable for	copper / carbon steel / stainless steel
connection	push
dimensions	10 - 54 mm (DN8 - DN50)

SEPP-Eis® frost resistant outdoor tap

product description

SEPP-Eis® is a frost resistant outdoor tap with a volume compensator in the wall duct and has a backflow preventer and aerator combination in accordance with DIN EN 1717. The SEPP-Eis® tap is certified with DVGW VP648.



scope of delivery:

- wall tube with protective cap and insulating tube
- outdoor wall tap with backflow preventer, DIN tube aerator and hose connector
- VSH Tectite end cap
- slotted foam rubber seal
- multi-function tool
- mounting set for inside and outside
- assembly Instructions

kiwa



DVGW

variants



SEPP-Eis® outdoor tap
headpart with t-handle
Article no. 0201250



SEPP-Eis® outdoor tap
headpart with
lockshield key
Article no. 0201251



SEPP-Eis® outdoor tap
headpart with with
lockable handle
Article no. 0201252



refined technology

Automatic function at freezing temperatures

Our outdoor wall tap is built to withstand freezing temperatures with its automatic function. When water freezes, it expands by about 10%. Our tap handles this expansion effortlessly using an internal volume compensator within the wall tube. This means you don't have to worry about shutting off and draining the tap when it's below freezing. Just make sure the volume compensator is in a frost-free area.

Although unlikely and in rare cases of prolonged, severe frost will impact any utilities including taps.



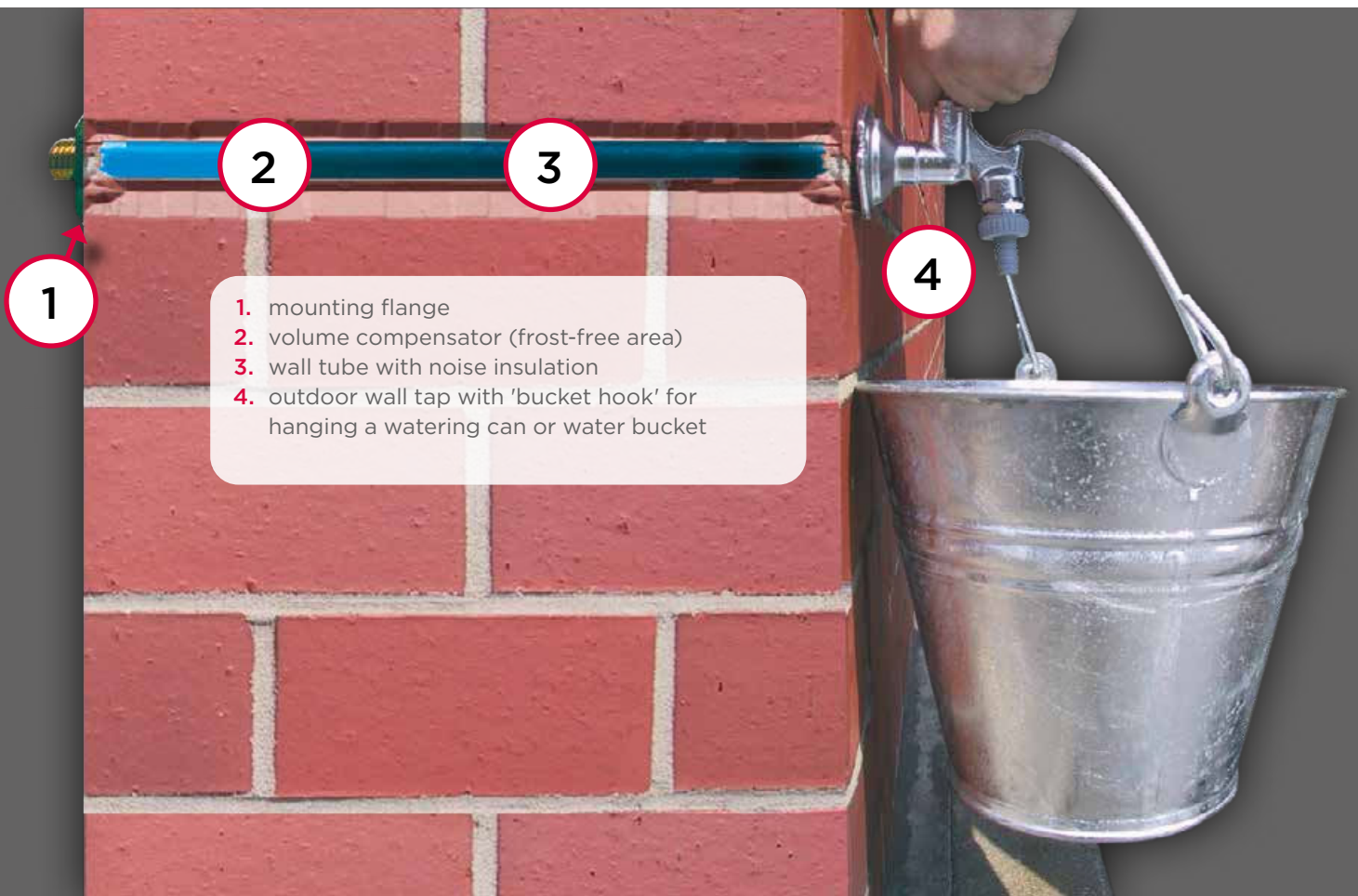
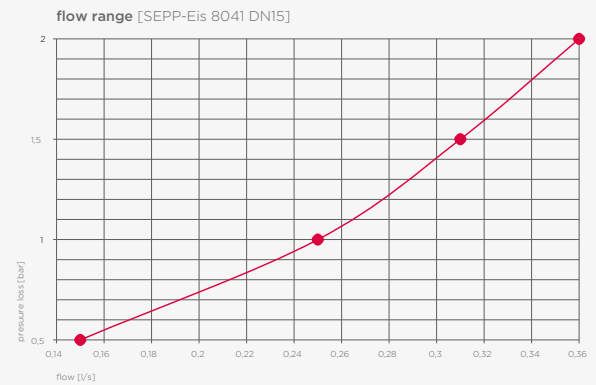
scope of application:

- hot and cold potable water installations
- for single or double-shell masonry
- for bricked or plastered facades
- for initial installation or retrofitting
- surface or flush-mounted installation



advantages:

- no need to shut off or empty the tube during frosty weather
- offers extra frost protection when the hose is on the tap
- prevents dripping when closed, avoiding stress on the head and floor water marks.
- includes a barrier at the extraction valve
- theft-proof design (tap cannot be removed from the wall).
- allows easy change of head parts (standard ½RV).
- features a 'bucket hook' on the tap.
- comes as a complete set with all necessary components, no assembly required.



1

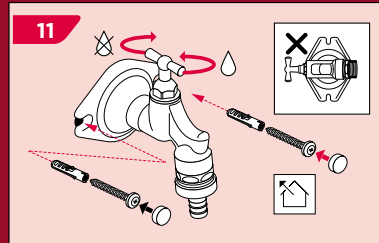
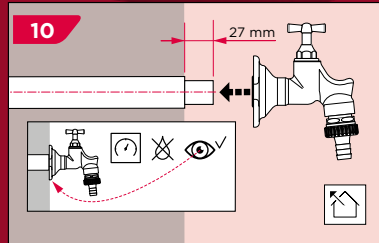
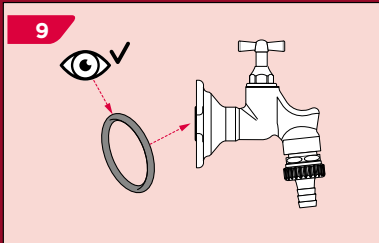
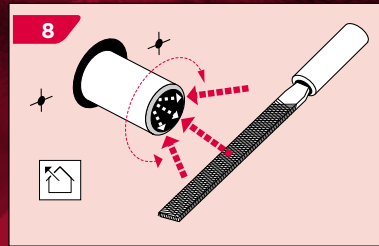
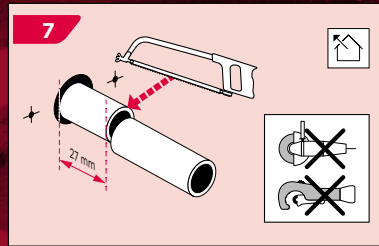
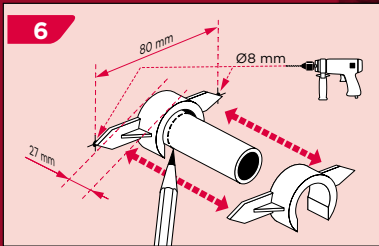
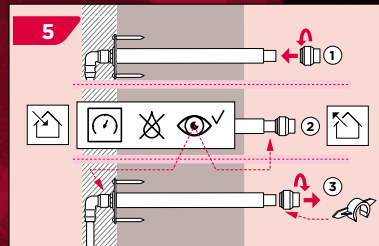
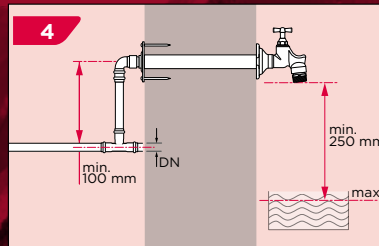
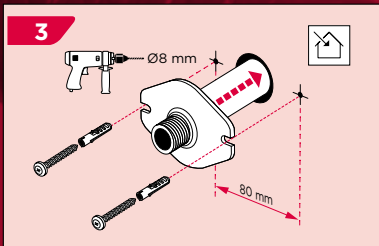
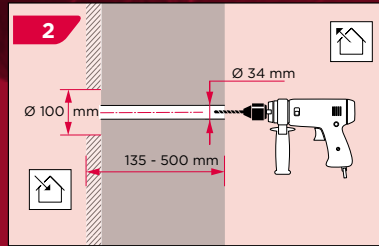
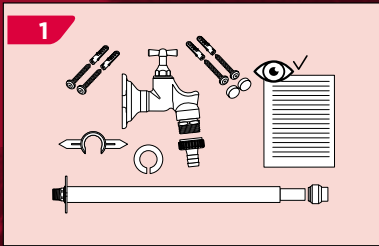
2

3

4

1. mounting flange
2. volume compensator (frost-free area)
3. wall tube with noise insulation
4. outdoor wall tap with 'bucket hook' for hanging a watering can or water bucket

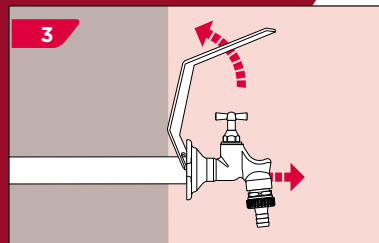
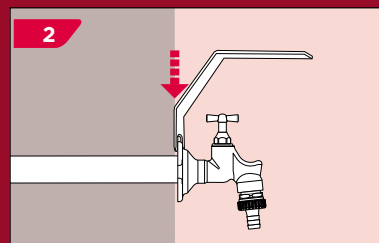
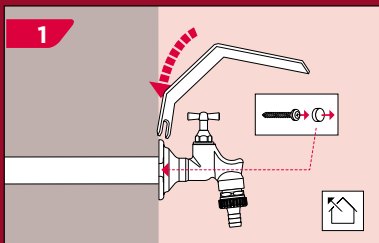
installation guidelines



quick assembly

- no cutting the spindle; there is none
- outdoor tap with VSH Tectite push fitting system
- complete set; contains all necessary components
- no need to put together individual components
- shell and prefabricated construction set in one
- suitable for walls with 135 to 500 mm thickness

demounting



accessories and spare parts



SEPP-Eis® Hygiene-Set

SEPP-Eis® hygiene set

Ensures hygienic rinsing of the SEPP-Eis®

- safety against stagnant water and germ contamination
- simple and quick retrofitting of the SEPP-Eis® outdoor fitting with ground-through installation

As a preventive measure to maintain potable water quality, the ground-through installation of rarely used tapping points is recommended. For this purpose, Aalberts integrated piping systems offers the SEPP-Eis® hygiene set.



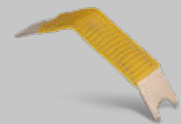
SEPP-Eis® head
Article no. 0201257



SEPP-Eis® head
Article no. 0201256



SEPP-Eis® head
Article no. 0201258



dismantling lever
Article no. 0211399



head part
Article no. 0001559



head part
Article no. 0201197



head part
Article no. 0201195



head part
Article no. 0002518



plug key
Article no. 0001804



Head part with key
Article no. 0201348



Hygiene set
Article no. 0537269



replacement aerator
Article no. 0211252

more information?

For a complete and up-to-date product range and our additional services, visit: www.aalberts-ips.co.uk

Would you like to make an appointment to meet an account manager in your region or receive advice and support from one of our experts? Please contact:

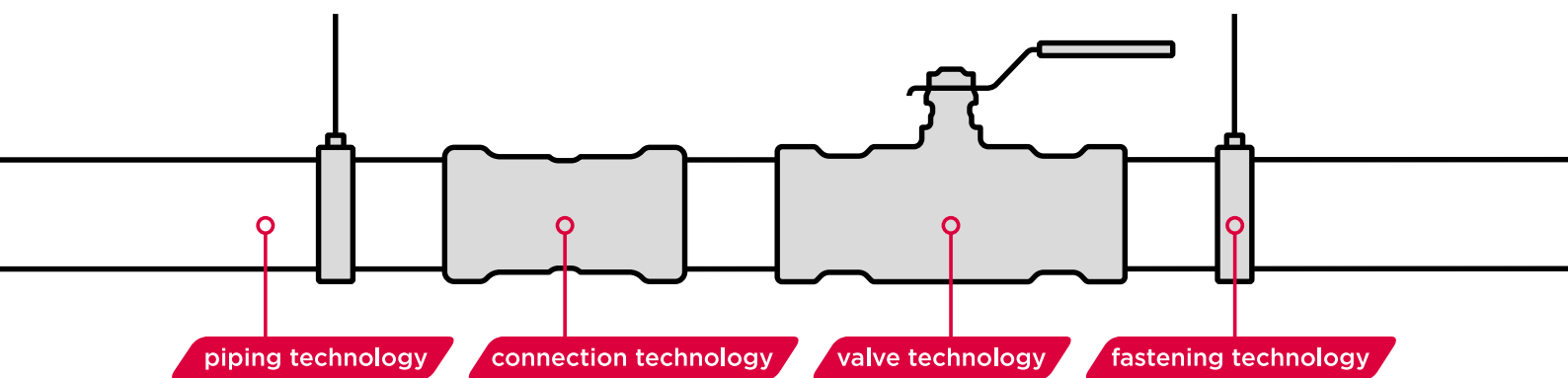
Aalberts integrated piping systems Ltd

tel: +44 (0) 1302 560 560

email: info.uk@aalberts-ips.com

www.aalberts-ips.com

*All brand names and logo styles are registered trademarks.
Maintaining a policy in this publication without prior notice.*



Aalberts integrated piping systems Ltd

St. Catherine's Avenue / Doncaster
South Yorkshire / DN4 8DF / England
www.aalberts-ips.co.uk