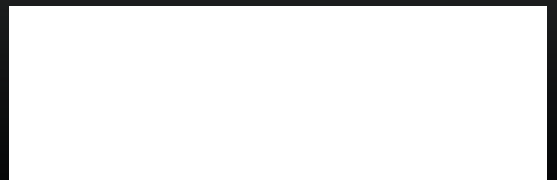




integrated  
piping systems

## VSH XPress





# Pegler

## VSH XPress price list

### contents

#### the press-fit jointing system

Copper	3 - 17
Stainless	18 - 26
Carbon	27 - 35
Gas	36 - 42
Stainless gas	43 - 47
Tools and accessories	48 - 57
Valves	58 - 72
Valves Fullflow stainless	73 - 74

Maintaining a policy of continual product development Aalberts Integrated Piping Systems Ltd reserve the right to change specifications, design, materials and prices of products listed in this price list without prior notice.

All tee sizes are UK designation throughout this price list.

**copper**

**S1/7270 straight coupling, press-fit x press-fit**



dimension	pack 1 qty	pack 2 qty	code	price cat	£ each
12mm	10	150	38009	PRSCU	3.90
15mm	10	200	38010	PRSCU	3.21
18mm	10	150	38011	PRSCU	4.16
22mm	10	100	38020	PRSCU	5.01
28mm	5	50	38030	PRSCU	11.07
35mm	5	25	38032	PRSCU	13.96
42mm	1	10	38034	PRSCU	25.06
54mm	1	10	38035	PRSCU	31.98
64mm	1	0	38970	PRSCU	POA
66.7mm	1	0	38036	PRSCU	77.25
76.1mm	1	0	38037	PRSCU	99.99
88.9mm	1	0	38039	PRSCU	134.41
108mm	1	0	38038	PRSCU	173.99

**S1FMF/7510 composite female metric flange PN16. Press-fit x powder coated steel flange to EN1092-1:1997 (BS4504)**



dimension	pack 1 qty	pack 2 qty	code	price cat	£ each
66.7mm (4 holes)	1	0	38364	PRSCU	230.79
76.1mm (4 holes)	1	0	38369	PRSCU	273.43
76.1mm (8 holes)	1	0	38365	PRSCU	273.43
88.9mm (8 holes)	1	0	38366	PRSCU	325.52
108mm (8 holes)	1	0	38367	PRSCU	322.65

**S1FMM/7520 composite male metric flange PN16. Male end for insertion into fitting x powder coated steel flange to EN1092-1:1997 (BS4504)**



dimension	pack 1 qty	pack 2 qty	code	price cat	£ each
66.7mm (4 holes)	1	0	38359	PRSCU	209.28
76.1mm (8 holes)	1	0	38360	PRSCU	244.88
108mm (8 holes)	1	0	38362	PRSCU	289.72

**S1R/7240 reduced coupling, press-fit x press-fit**



dimension	pack 1 qty	pack 2 qty	code	price cat	£ each
15 x 12mm	10	150	38063	PRSCU	13.31
16 x 15mm	10	140	38061	PRSCU	13.26
22 x 15mm	10	100	38064	PRSCU	15.04
28 x 15mm	10	80	38065	PRSCU	27.70
28 x 22mm	10	80	38066	PRSCU	34.80
35 x 28mm	5	15	38067	PRSCU	48.75
42 x 35mm	1	20	38068	PRSCU	87.73
54 x 42mm	1	10	38069	PRSCU	111.93

**copper**

**S1 slip/7270S straight coupling slip pattern, press-fit x press-fit**



**S2/6270G straight female connector, press-fit x BSP parallel female thread**



dimension	pack 1 qty	pack 2 qty	code	price cat	£ each
15mm	5	75	38044	PRSCU	7.11
18mm	5	75	38054	PRSCU	9.01
22mm	5	50	38045	PRSCU	11.81
28mm	5	40	38046	PRSCU	17.56
35mm	5	25	38047	PRSCU	20.92
42mm	1	10	38048	PRSCU	30.08
54mm	1	10	38049	PRSCU	38.34
66.7mm	1	0	38040	PRSCU	111.95
76.1mm	1	0	38041	PRSCU	142.71
88.9mm	1	0	38042	PRSCU	192.59
108mm	1	0	38043	PRSCU	225.80

dimension	pack 1 qty	pack 2 qty	code	price cat	£ each
12mm x 3/8"	5	250	38082	PRSCU	12.36
12mm x 1/2"	5	150	38081	PRSCU	12.13
15mm x 3/8"	5	175	38083	PRSCU	12.60
15mm x 1/2"	10	150	38090	PRSCU	14.25
15mm x 3/4"	5	100	38091	PRSCU	14.95
18mm x 1/2"	5	100	38084	PRSCU	16.45
18mm x 3/4"	5	100	38085	PRSCU	19.94
22mm x 1/2"	5	100	38086	PRSCU	17.85
22mm x 3/4"	5	75	38092	PRSCU	18.80
22mm x 1"	5	75	38087	PRSCU	20.67
28mm x 3/4"	5	50	38088	PRSCU	34.78
28mm x 1"	5	50	38093	PRSCU	25.36
28mm x 1 1/4"	5	50	38103	PRSCU	36.46
35mm x 3/4"	5	50	38080	PRSCU	49.53
35mm x 1"	5	40	38089	PRSCU	49.53
35mm x 1 1/4"	5	25	38094	PRSCU	49.53
42mm x 1 1/4"	1	15	38101	PRSCU	65.72
42mm x 1 1/2"	1	10	38095	PRSCU	70.80
54mm x 2"	1	8	38096	PRSCU	121.34
64mm x 2 1/2"	1	0	38954	PRSCU	222.19

**copper**

**S3/6243G straight male connector.**  
 Straight male connector, press-fit x BSP taper male thread



dimension	pack 1 qty	pack 2 qty	code	price cat	£ each
12mm x 3/8"	5	250	38105	PRSCU	10.75
12mm x 1/2"	5	200	38106	PRSCU	10.85
15mm x 3/8"	5	150	38107	PRSCU	11.13
15mm x 1/2"	10	100	38114	PRSCU	8.88
15mm x 3/4"	5	100	38115	PRSCU	11.13
18mm x 1/2"	5	100	38108	PRSCU	14.41
18mm x 3/4"	5	100	38109	PRSCU	17.49
22mm x 1/2"	5	100	38110	PRSCU	15.66
22mm x 3/4"	10	100	38116	PRSCU	14.11
22mm x 1"	5	75	38117	PRSCU	15.41
28mm x 3/4"	5	75	38111	PRSCU	22.48
28mm x 1"	5	50	38118	PRSCU	18.88
28mm x 1 1/4"	5	50	38127	PRSCU	24.67
35mm x 1"	5	50	38112	PRSCU	34.16
35mm x 1 1/4"	5	50	38119	PRSCU	34.16
42mm x 1 1/4"	1	20	38113	PRSCU	48.40
42mm x 1 1/2"	1	15	38120	PRSCU	45.78
54mm x 2"	1	10	38121	PRSCU	88.34
64mm x 2 1/2"	1	0	38956	PRSCU	194.16
66.7mm x 2 1/2"	1	0	38122	PRSCU	169.65
76.1mm x 2 1/2"	1	0	38126	PRSCU	288.20
76.1mm x 3"	1	0	38123	PRSCU	293.61
88.9mm x 3"	1	0	38125	PRSCU	454.05
108mm x 4"	1	0	38124	PRSCU	508.33

**S6/7243 reducer, larger end male for insertion into fitting x press-fit**



dimension	pack 1 qty	pack 2 qty	code	price cat	£ each
15 x 12mm	10	200	38193	PRSCU	5.31
18 x 12mm	10	200	38196	PRSCU	5.72
18 x 15mm	10	100	38197	PRSCU	5.72
22 x 15mm	10	100	38200	PRSCU	3.81
22 x 18mm	10	100	38201	PRSCU	7.06
28 x 15mm	10	100	38202	PRSCU	10.54
28 x 18mm	5	75	38203	PRSCU	10.62
28 x 22mm	10	100	38204	PRSCU	10.90
35 x 22mm	5	50	38207	PRSCU	13.10
35 x 28mm	5	40	38208	PRSCU	14.48
42 x 22mm	1	20	38210	PRSCU	22.62
42 x 28mm	1	20	38211	PRSCU	21.54
42 x 35mm	1	10	38212	PRSCU	21.54
54 x 28mm	1	10	38215	PRSCU	34.30
54 x 35mm	1	15	38216	PRSCU	29.17
54 x 42mm	1	10	38217	PRSCU	29.17
66.7 x 28mm	1	0	38218	PRSCU	84.79
66.7 x 35mm	1	0	38219	PRSCU	84.79
66.7 x 42mm	1	0	38220	PRSCU	84.79
66.7 x 54mm	1	0	38221	PRSCU	102.63
76.1mm x 35mm	1	0	38222	PRSCU	123.97
76.1mm x 42mm	1	0	38223	PRSCU	123.97
76.1mm x 54mm	1	0	38224	PRSCU	111.19
76.1mm x 66.7mm	1	0	38225	PRSCU	111.19
88.9mm x 42mm	1	0	38233	PRSCU	143.71
88.9mm x 54mm	1	0	38226	PRSCU	143.71
88.9mm x 76.1mm	1	0	38227	PRSCU	143.71
108mm x 42mm	1	0	38228	PRSCU	181.78
108mm x 54mm	1	0	38229	PRSCU	170.85
108mm x 66.7mm	1	0	38230	PRSCU	186.34
108mm x 76.1mm	1	0	38231	PRSCU	186.34
108mm x 88.9mm	1	0	38232	PRSCU	214.27

**copper**

**S7/6246G female adaptor. Male copper for insertion into a fitting x BSP parallel female thread**



dimension	pack 1 qty	pack 2 qty	code	price cat	£ each
15mm x 1/2"	10	150	38160	PRSCU	7.46
18mm x 1/2"	10	150	38157	PRSCU	9.06
18mm x 3/4"	10	100	38158	PRSCU	9.40
22mm x 1/2"	10	100	38159	PRSCU	9.62
22mm x 3/4"	10	100	38161	PRSCU	9.62
28mm x 3/4"	5	75	38166	PRSCU	15.15
28mm x 1"	5	50	38162	PRSCU	12.88
35mm x 1"	5	50	38167	PRSCU	25.56
35mm x 1 1/4"	1	15	38163	PRSCU	25.94
42mm x 1 1/2"	1	15	38164	PRSCU	39.35
54mm x 2"	1	10	38165	PRSCU	48.68

**S11/6330 union coupling**



dimension	pack 1 qty	pack 2 qty	code	price cat	£ each
15mm	5	75	38180	PRSCU	21.81
18mm	5	75	38179	PRSCU	29.83
22mm	5	50	38181	PRSCU	33.23
28mm	5	25	38182	PRSCU	46.89
35mm	5	20	38183	PRSCU	97.01
42mm	1	10	38184	PRSCU	132.74
54mm	1	5	38185	PRSCU	145.51

**S12/7002A elbow, press-fit x press-fit**



dimension	pack 1 qty	pack 2 qty	code	price cat	£ each
12mm	10	200	38279	PRSCU	5.12
15mm	10	150	38280	PRSCU	3.43
18mm	10	100	38282	PRSCU	5.38
22mm	10	50	38290	PRSCU	5.83
28mm	5	40	38300	PRSCU	12.51
35mm	5	25	38302	PRSCU	26.98
42mm	1	10	38304	PRSCU	51.80
54mm	1	8	38306	PRSCU	71.85
66.7mm	1	0	38307	PRSCU	123.19
76.1mm	1	0	38308	PRSCU	196.95
88.9mm	1	0	38309	PRSCU	246.14
108mm	1	0	38310	PRSCU	362.37

**S8/6280G male adaptor. Male copper for insertion into a fitting x BSP male taper thread**



dimension	pack 1 qty	pack 2 qty	code	price cat	£ each
15mm x 1/2"	5	150	38170	PRSCU	5.44
18mm x 1/2"	5	125	38173	PRSCU	7.10
18mm x 3/4"	5	100	38174	PRSCU	7.34
22mm x 1/2"	5	100	38175	PRSCU	8.49
22mm x 3/4"	5	100	38171	PRSCU	7.34
28mm x 1"	5	50	38172	PRSCU	11.24
35mm x 1 1/4"	1	40	38176	PRSCU	40.05
42mm x 1 1/2"	1	20	38177	PRSCU	67.66

**copper**

**S12R/7002A reduced elbow, press-fit x press-fit**



dimension	pack 1 qty	pack 2 qty	code	price cat	£ each
22 x 15mm	10	50	38311	PRSCU	7.54

**S12S/7001A street elbow, press-fit x male end, for insertion into fitting**



dimension	pack 1 qty	pack 2 qty	code	price cat	£ each
12mm	10	200	38317	PRSCU	5.35
15mm	10	150	38318	PRSCU	3.54
18mm	10	100	38319	PRSCU	5.68
22mm	10	50	38320	PRSCU	6.15
28mm	5	40	38322	PRSCU	16.32
35mm	5	20	38324	PRSCU	28.47
42mm	1	10	38325	PRSCU	55.73
54mm	1	8	38326	PRSCU	74.86
66.7mm	1	0	38327A	PRSCU	141.67
76.1mm	1	0	38328	PRSCU	206.78
88.9mm	1	0	38329	PRSCU	259.13
108mm	1	0	38330A	PRSCU	362.37

**S13/6092G male elbow, press-fit x BSP taper male thread**



dimension	pack 1 qty	pack 2 qty	code	price cat	£ each
12mm x 1/2"	5	150	38370	PRSCU	18.74
15mm x 3/8"	5	100	38339	PRSCU	21.30
15mm x 1/2"	10	50	38333	PRSCU	20.60
18mm x 1/2"	5	25	38340	PRSCU	28.86
18mm x 3/4"	5	75	38372	PRSCU	28.86
22mm x 3/4"	5	25	38334	PRSCU	31.59
28mm x 1"	5	25	38335	PRSCU	48.41
35mm x 1 1/4"	5	20	38336	PRSCU	62.92
42mm x 1 1/2"	1	15	38337	PRSCU	82.03
54mm x 2"	1	10	38338	PRSCU	119.89

**S13K male elbow, press-fit x BSP taper male thread**

dimension	pack 1 qty	pack 2 qty	code	price cat	£ each
15mm x 1/2"	10	50	38980	PRSCU	23.97

**copper**

**S14/6090G female elbow, press-fit x parallel female thread**



dimension	pack 1 qty	pack 2 qty	code	price cat	£ each
12mm x 1/2"	5	100	38345	PRSCU	17.46
15mm x 1/2"	10	100	38351	PRSCU	17.01
15mm x 3/4"	10	100	38344	PRSCU	22.68
18mm x 1/2"	5	75	38348	PRSCU	24.57
18mm x 3/4"	5	75	38349	PRSCU	24.57
22mm x 1/2"	5	75	38350	PRSCU	20.15
22mm x 3/4"	5	50	38353	PRSCU	25.01
28mm x 1"	5	40	38354	PRSCU	41.42
35mm x 1 1/4"	5	20	38355	PRSCU	53.49
42mm x 1 1/2"	1	10	38356	PRSCU	72.79
54mm x 2"	1	8	38357	PRSCU	107.09

**S15L/6472L backplate elbow. Long pattern, press-fit x female iron**



dimension	pack 1 qty	pack 2 qty	code	price cat	£ each
15mm x 1/2"	5	40	38399	PRSCU	38.24

**S19/7005 90° bend. Male ends for insertion into fitting**



dimension	pack 1 qty	pack 2 qty	code	price cat	£ each
15mm	20	80	38390	PRSCU	13.85
22mm	10	30	38392	PRSCU	19.82
28mm	10	20	38393	PRSCU	33.14

**S15/6472G backplate elbow, press-fit x BSP parallel female thread**



dimension	pack 1 qty	pack 2 qty	code	price cat	£ each
12mm x 1/2"	5	50	38397	PRSCU	18.23
15mm x 1/2"	10	80	38400	PRSCU	16.15
18mm x 1/2"	5	50	38398	PRSCU	35.25
22mm x 3/4"	5	50	38401	PRSCU	35.44



**copper**

**S21/7041 obtuse elbow, press-fit x press-fit**



dimension	pack 1 qty	pack 2 qty	code	price cat	£ each
12mm	10	250	38411	PRSCU	4.27
15mm	10	200	38410	PRSCU	4.59
18mm	10	150	38413	PRSCU	5.59
22mm	10	100	38412	PRSCU	6.29
28mm	5	50	38414	PRSCU	18.93
35mm	5	25	38416	PRSCU	26.99
42mm	1	10	38417	PRSCU	44.89
54mm	1	5	38418	PRSCU	63.85
66.7mm	1	0	38419	PRSCU	148.78
76.1mm	1	0	38420	PRSCU	184.34
88.9mm	1	0	38422	PRSCU	236.37
108mm	1	0	38421	PRSCU	289.26

**S22/7086 partial crossover, press-fit x male end for insertion into fitting**



dimension	pack 1 qty	pack 2 qty	code	price cat	£ each
15mm	5	50	38435	PRSCU	15.18
18mm	5	50	38437	PRSCU	23.92
22mm	5	20	38436	PRSCU	26.61

**S22S/7087 crossover, both ends male for insertion into fitting**



dimension	pack 1 qty	pack 2 qty	code	price cat	£ each
15mm	10	50	38438	PRSCU	16.18
18mm	10	50	38434	PRSCU	25.54
22mm	10	40	38439	PRSCU	45.38

**S21S/7040 obtuse street elbow, press-fit x male end for insertion into fitting**



dimension	pack 1 qty	pack 2 qty	code	price cat	£ each
12mm	10	250	38402	PRSCU	3.53
15mm	10	200	38404	PRSCU	3.81
18mm	10	150	38403	PRSCU	4.59
22mm	10	100	38405	PRSCU	5.68
28mm	5	50	38406	PRSCU	19.71
35mm	5	25	38407	PRSCU	28.40
42mm	1	10	38408	PRSCU	45.06
54mm	1	5	38409	PRSCU	67.01
66.7mm	1	0	38430	PRSCU	171.06
76.1mm	1	0	38431	PRSCU	193.62
88.9mm	1	0	38433	PRSCU	248.77
108mm	1	0	38432A	PRSCU	289.26

**S23/7085 full crossover press-fit x press-fit**



dimension	pack 1 qty	pack 2 qty	code	price cat	£ each
15mm	5	75	38440	PRSCU	15.89
18mm	10	40	38442	PRSCU	24.77
22mm	5	30	38441	PRSCU	27.45

**copper**

**S24/7130 equal tee, press-fit on all ends**



dimension	pack 1 qty	pack 2 qty	code	price cat	£ each
12mm	10	150	38472	PRSCU	8.19
15mm	10	100	38450	PRSCU	5.52
18mm	10	50	38451	PRSCU	9.58
22mm	10	50	38460	PRSCU	10.02
28mm	5	25	38462	PRSCU	19.27
35mm	5	15	38464	PRSCU	33.33
42mm	1	10	38466	PRSCU	65.83
54mm	1	4	38467	PRSCU	82.16
64mm	1	0	38961	PRSCU	POA
66.7mm	1	0	38468A	PRSCU	244.55
76.1mm	1	0	38469A	PRSCU	348.58
88.9mm	1	0	38470A	PRSCU	416.42
108mm	1	0	38471A	PRSCU	473.87

**S25/7130 tee, reduced branch, press-fit on all ends**



dimension	pack 1 qty	pack 2 qty	code	price cat	£ each
15 x 15 x 12mm	10	100	38488	PRSCU	8.54
18 x 18 x 12mm	10	50	38452	PRSCU	8.68
18 x 18 x 15mm	10	50	38454	PRSCU	8.68
22 x 22 x 12mm	10	30	38491	PRSCU	8.75
22 x 22 x 15mm	10	50	38490	PRSCU	8.15
22 x 22 x 18mm	10	50	38535	PRSCU	8.75
28 x 28 x 12mm	5	30	38493	PRSCU	22.78
28 x 28 x 15mm	5	25	38492	PRSCU	22.78
28 x 28 x 18mm	5	25	38538	PRSCU	22.78
28 x 28 x 22mm	5	25	38494	PRSCU	22.78
35 x 35 x 15mm	5	30	38496	PRSCU	30.11
35 x 35 x 22mm	5	15	38497	PRSCU	29.66
35 x 35 x 28mm	5	20	38498	PRSCU	33.05
42 x 42 x 15mm	1	10	38499	PRSCU	64.53
42 x 42 x 22mm	1	15	38500	PRSCU	61.33
42 x 42 x 28mm	1	5	38501	PRSCU	59.73
42 x 42 x 35mm	1	8	38502	PRSCU	59.73
54 x 54 x 22mm	1	8	38504	PRSCU	104.33
54 x 54 x 28mm	1	5	38505	PRSCU	104.33
54 x 54 x 35mm	1	5	38506	PRSCU	100.98
54 x 54 x 42mm	1	5	38507	PRSCU	100.98
66.7 x 66.7 x 28mm	1	0	38550	PRSCU	245.69
66.7 x 66.7 x 35mm	1	0	38560	PRSCU	245.55
66.7 x 66.7 x 42mm	1	0	38561	PRSCU	245.55
66.7 x 66.7 x 54mm	1	0	38562	PRSCU	238.91
76.1 x 76.1 x 22mm	1	0	38563	PRSCU	300.04
76.1 x 76.1 x 28mm	1	0	38564	PRSCU	300.04
76.1 x 76.1 x 35mm	1	0	38553	PRSCU	301.21
76.1 x 76.1 x 42mm	1	0	38551	PRSCU	301.21
76.1 x 76.1 x 54mm	1	0	38552	PRSCU	301.21
108 X 108 X 54mm	1	0	38555A	PRSCU	400.87
108 x 108 x 66.7mm	1	0	38565A	PRSCU	469.89
108 x 108 x 76.1mm	1	0	38557A	PRSCU	471.30

## copper

S26/7130 tee, one end reduced, press-fit on all ends



dimension	pack 1 qty	pack 2 qty	code	price cat	£ each
15 x 12 x 15mm	10	100	38508	PRSCU	8.54
18 x 15 x 18mm	10	50	38455	PRSCU	8.68
22 x 15 x 22mm	5	50	38510	PRSCU	17.71
22 x 18 x 22mm	10	50	38511	PRSCU	17.71
28 x 15 x 28mm	5	25	38512	PRSCU	17.82
28 x 22 x 28mm	5	25	38514	PRSCU	27.84
35 x 22 x 35mm	5	15	38517	PRSCU	38.44
35 x 28 x 35mm	5	15	38518	PRSCU	34.53

S28/7130 tee, both ends reduced press-fit on all ends



dimension	pack 1 qty	pack 2 qty	code	price cat	£ each
15 x 15 x 18mm	10	100	38547	PRSCU	16.03
15 x 15 x 22mm	10	50	38545	PRSCU	16.03
22 x 22 x 28mm	5	35	38548	PRSCU	21.34
28 x 28 x 35mm	5	15	38549	PRSCU	38.31

S30/6130G female branch tee, press-fit x BSP parallel female branch

S27/7130 tee, one end and branch reduced, press-fit on all ends



dimension	pack 1 qty	pack 2 qty	code	price cat	£ each
15 x 12 x 12mm	10	100	38527	PRSCU	8.54
18 x 15 x 15mm	10	50	38453	PRSCU	8.68
22 x 15 x 15mm	10	50	38530	PRSCU	16.03
22 x 18 x 15mm	10	50	38531	PRSCU	16.03
22 x 15 x 18mm	10	50	38533	PRSCU	28.40
22 x 18 x 18mm	10	50	38534	PRSCU	28.40
28 x 22 x 18mm	5	25	38529	PRSCU	27.84
28 x 22 x 15mm	5	25	38536	PRSCU	16.97
28 x 22 x 22mm	5	25	38532	PRSCU	28.40
35 x 22 x 22mm	5	20	38539	PRSCU	38.31
35 x 28 x 22mm	5	15	38541	PRSCU	39.11
35 x 28 x 28mm	5	15	38542	PRSCU	33.05
42 x 35 x 35mm	5	10	38546	PRSCU	50.30
54 x 42 x 42mm	1	8	38566	PRSCU	100.98



dimension	pack 1 qty	pack 2 qty	code	price cat	£ each
15 x 15mm x 1/2"	5	50	38585	PRSCU	19.57
18 x 18mm x 1/2"	5	50	38586	PRSCU	43.57
22 x 22mm x 1/2"	5	50	38591	PRSCU	29.19
22 x 22mm x 3/4"	5	40	38587	PRSCU	39.95
28 x 28mm x 1/2"	5	20	38592	PRSCU	44.92
28 x 28mm x 3/4"	5	25	38593	PRSCU	48.38
35 x 35mm x 1/2"	5	15	38594	PRSCU	51.45
42 x 42mm x 1/2"	1	15	38596	PRSCU	61.42
54 x 54mm x 1/2"	1	5	38597	PRSCU	75.58
76.1 x 76.1mm x 1/2"	1	0	38190	PRSCU	327.17
108 x 108mm x 1/2"	1	0	38191	PRSCU	422.55

**copper**

**S32/6131G tee multi-port female branch tee**



dimension	pack 1 qty	pack 2 qty	code	price cat	£ each
66.7mm x 1/2" (2 x ports)	1	0	38189	PRSCU	321.45
76.1mm x 1/2" (2 x ports)	1	0	38188	PRSCU	360.83
88.9mm x 3/4" (3 x ports)	1	0	38192	PRSCU	431.07
108mm x 3/4" (4 x ports)	1	0	38206	PRSCU	475.56

**S61/7301 stop end, for use with copper tube**



dimension	pack 1 qty	pack 2 qty	code	price cat	£ each
12mm	10	350	38702	PRSCU	7.65
15mm	10	250	38695	PRSCU	7.42
18mm	10	200	38696	PRSCU	9.40
22mm	10	150	38697	PRSCU	8.62
28mm	5	75	38698	PRSCU	13.63
35mm	2	40	38699	PRSCU	23.46
42mm	1	20	38700	PRSCU	35.29
54mm	1	15	38701	PRSCU	42.47
66.7mm	1	0	38691	PRSCU	81.10
76.1mm	1	0	38692	PRSCU	88.76
88.9mm	1	0	38693	PRSCU	POA
108mm	1	0	38694	PRSCU	151.45

**S60 stop end, male end for insertion into fitting**



dimension	pack 1 qty	pack 2 qty	code	price cat	£ each
35mm	1	25	38686	PRSCU	27.84
42mm	1	12	38688	PRSCU	40.69
54mm	1	12	38690	PRSCU	51.93

**S65F/6096G elbow, press-fit x female union**



dimension	pack 1 qty	pack 2 qty	code	price cat	£ each
12mm x 1/2"	5	50	38790	PRSCU	38.44
15mm x 1/2"	5	50	38791	PRSCU	38.86
18mm x 1/2"	5	50	38792	PRSCU	39.99
18mm x 3/4"	5	50	38793	PRSCU	55.33
22mm x 3/4"	5	25	38794	PRSCU	57.72
22mm x 1"	5	25	38795	PRSCU	63.20
28mm x 1"	5	20	38796	PRSCU	64.12

**copper**

**S68FF/6359 union press-fit female x union end**



dimension	pack 1 qty	pack 2 qty	code	price cat	£ each
15mm x 3/4"	5	100	38235	PRSCU	29.58
18mm x 3/4"	5	100	38237	PRSCU	37.67
22mm x 1"	5	75	38238	PRSCU	39.81
28mm x 1 1/4"	5	50	38239	PRSCU	44.22
35mm x 1 1/2"	5	40	38242	PRSCU	67.59
42mm x 1 3/4"	5	15	38243	PRSCU	85.98
54mm x 2 3/8"	1	5	38244	PRSCU	111.75

**S69F/6330G straight female union connector, press-fit x BSP parallel female thread**



dimension	pack 1 qty	pack 2 qty	code	price cat	£ each
12mm x 1/2"	5	100	38828	PRSCU	33.14
15mm x 1/2"	5	75	38833	PRSCU	33.52
15mm x 3/4"	5	75	38829	PRSCU	46.51
18mm x 1/2"	5	75	38830	PRSCU	48.12
18mm x 3/4"	5	50	38831	PRSCU	49.41
22mm x 3/4"	5	60	38834	PRSCU	49.64
22mm x 1"	5	50	38832	PRSCU	49.64
28mm x 3/4"	5	40	38827	PRSCU	60.87
28mm x 1"	5	40	38835	PRSCU	55.13
35mm x 1 1/4"	5	25	38836	PRSCU	60.71
42mm x 1 1/2"	1	10	38837	PRSCU	80.85
54mm x 2"	1	5	38838	PRSCU	106.58

**S69/6331G straight male union connector, press-fit x BSP taper male thread**



dimension	pack 1 qty	pack 2 qty	code	price cat	£ each
12mm x 1/2"	5	75	38808	PRSCU	33.14
15mm x 1/2"	5	50	38813	PRSCU	33.52
15mm x 3/4"	5	50	38809	PRSCU	33.46
18mm x 1/2"	5	50	38810	PRSCU	34.46
18mm x 3/4"	5	50	38811	PRSCU	47.66
22mm x 1/2"	5	50	38812	PRSCU	54.57
22mm x 3/4"	5	50	38814	PRSCU	49.64
22mm x 1"	5	50	38815	PRSCU	54.57
28mm x 3/4"	5	40	38820	PRSCU	53.15
28mm x 1"	5	25	38816	PRSCU	55.13
35mm x 1 1/4"	5	25	38817	PRSCU	60.71
42mm x 1 1/2"	1	10	38818	PRSCU	80.85
54mm x 2"	1	5	38819	PRSCU	106.58

**S1CP/7270 straight coupling, press-fit x press-fit**



dimension	pack 1 qty	pack 2 qty	code	price cat	£ each
12mm	10	350	38610	PRSCU	6.86
15mm	10	180	38611	PRSCU	5.97
22mm	10	60	38612	PRSCU	9.36

**copper**

**S1SCP/7270S** straight coupling slip pattern, press-fit x press-fit



dimension	pack 1 qty	pack 2 qty	code	price cat	£ each
15mm	5	100	38614	PRSCU	12.42

**S1RCP/7240S** reduced coupling, press-fit x press-fit



dimension	pack 1 qty	pack 2 qty	code	price cat	£ each
15 x 12mm	10	150	38616	PRSCU	23.31
22 x 15mm	10	100	38617	PRSCU	26.32

**S2CP/6270G** straight female connector, press-fit x BSP parallel female thread



dimension	pack 1 qty	pack 2 qty	code	price cat	£ each
12mm x 3/8"	5	100	38619	PRSCU	21.62
12mm x 1/2"	5	100	38620	PRSCU	21.23
15mm x 3/8"	5	100	38621	PRSCU	22.07
15mm x 1/2"	10	150	38622	PRSCU	24.95

**S3CP/6243G** straight male connector, press-fit x BSP taper male thread



dimension	pack 1 qty	pack 2 qty	code	price cat	£ each
12mm x 3/8"	5	200	38627	PRSCU	18.84
12mm x 1/2"	5	100	38628	PRSCU	19.02
15mm x 3/8"	5	100	38629	PRSCU	19.48
15mm x 1/2"	10	150	38630	PRSCU	16.67

**S6CP/7243** reducer, larger end male for insertion into fitting x press-fit



dimension	pack 1 qty	pack 2 qty	code	price cat	£ each
15 x 12mm	10	180	38636	PRSCU	9.25
22 x 15mm	10	100	38639	PRSCU	6.91

**S8CP/6280G** male adaptor. Male end for insertion into fitting x BSP taper male thread



dimension	pack 1 qty	pack 2 qty	code	price cat	£ each
15mm x 1/2"	5	100	38642	PRSCU	9.55

**copper**

**S12CP/7002A elbow, press-fit x press-fit**



dimension	pack 1 qty	pack 2 qty	code	price cat	£ each
12mm	10	100	38645	PRSCU	8.96
15mm	10	150	38646	PRSCU	6.46
22mm	10	50	38647	PRSCU	10.92

**S21CP/7041 obtuse elbow, press-fit x press-fit**



dimension	pack 1 qty	pack 2 qty	code	price cat	£ each
12mm	10	180	38667	PRSCU	7.53
15mm	10	150	38668	PRSCU	8.02

**S12SCP/7001A street elbow, press-fit x male end for insertion into fitting**



dimension	pack 1 qty	pack 2 qty	code	price cat	£ each
12mm	10	100	38649	PRSCU	9.34
15mm	10	100	38650	PRSCU	6.54
22mm	10	80	38651	PRSCU	11.33

**S21SCP/7040 obtuse street elbow. Press-fit x male end for insertion into fitting.**



dimension	pack 1 qty	pack 2 qty	code	price cat	£ each
12mm	10	180	38671	PRSCU	6.22
15mm	10	150	38672	PRSCU	6.64

**S13CP/6092G male elbow, press-fit x BSP taper male thread**



dimension	pack 1 qty	pack 2 qty	code	price cat	£ each
15mm x 1/2"	10	100	38655	PRSCU	35.32

**S22CP/7086 partial crossover, press-fit x male end for insertion into fitting**



dimension	pack 1 qty	pack 2 qty	code	price cat	£ each
15mm	5	40	38675	PRSCU	26.56

**copper**

**S24CP/7130 equal tee, press-fit on all ends**



dimension	pack 1 qty	pack 2 qty	code	price cat	£ each
12mm	10	80	38710	PRSCU	14.34
15mm	10	80	38711	PRSCU	10.34
22mm	10	40	38712	PRSCU	18.84

**S27CP/7130 tee, one end and branch reduced, press-fit on all ends**



dimension	pack 1 qty	pack 2 qty	code	price cat	£ each
15 x 12 x 12mm	10	100	38723	PRSCU	14.90

**S25CP/7130 tee, reduced branch, press-fit on all ends**



dimension	pack 1 qty	pack 2 qty	code	price cat	£ each
15 x 15 x 12mm	10	100	38714	PRSCU	14.90
22 x 22 x 15mm	10	50	38715	PRSCU	15.26

**S30CP/6130G female branch tee, press-fit x BSP parallel female branch**



dimension	pack 1 qty	pack 2 qty	code	price cat	£ each
15 x 15mm x 1/2"	5	60	38733	PRSCU	34.26

**S26CP/7130 tee, one end reduced, press-fit on all ends**



dimension	pack 1 qty	pack 2 qty	code	price cat	£ each
15 x 12 x 15mm	10	80	38719	PRSCU	14.90

**S61CP/7301 stop end, for use with copper tube**



dimension	pack 1 qty	pack 2 qty	code	price cat	£ each
15mm	10	250	38739	PRSCU	12.99



**copper**

S68FFCP/6359 flat faced union adaptor.  
Press-fit female x union nut



dimension	pack 1 qty	pack 2 qty	code	price cat	£ each
15mm x 3/4"	5	90	38742	PRSCU	51.79

**stainless**

**SS1 straight coupling, press-fit x press-fit**



dimension	pack 1 qty	pack 2 qty	code	price cat	£ each
15mm (A)	10	140	11694	PRSSF	10.91
18mm (A)	10	140	11695	PRSSF	11.80
22mm	10	80	11696	PRSSF	13.74
28mm	10	60	11697	PRSSF	15.47
35mm	5	40	11698	PRSSF	19.28
42mm	4	24	11699	PRSSF	26.24
54mm	4	16	11700	PRSSF	31.62
76.1mm (C)	4	0	20415	PRSSF	156.18
88.9mm (C)	4	0	20416	PRSSF	178.46
108mm (C)	2	0	20417	PRSSF	226.85
139.7mm	1	0	11470	PRLSF	379.90
168.3mm	1	0	11471	PRLSF	458.59

**SS1 slip straight coupling slip pattern, press-fit x press-fit**



dimension	pack 1 qty	pack 2 qty	code	price cat	£ each
15mm (A)	10	140	11728	PRSSF	18.16
18mm (A)	10	100	11730	PRSSF	20.75
22mm	10	60	11729	PRSSF	21.55
28mm	10	40	11731	PRSSF	24.93
35mm	5	20	11732	PRSSF	27.91
42mm	4	16	11733	PRSSF	32.49
54mm	2	8	11734	PRSSF	41.51
76.1mm (C)	2	0	20428	PRSSF	230.65
88.9mm (C)	2	0	20429	PRSSF	260.39
108mm (C)	2	0	20430	PRSSF	312.41

**SS1FMF female metric flange PN16. Press-fit x steel flange to EN1092-1:1997 (BS4504)**



dimension	pack 1 qty	pack 2 qty	code	price cat	£ each
22mm (4 holes)	1	12	11570	PRSSF	149.78
28mm (4 holes)	1	12	11571	PRSSF	168.31
35mm (4 holes)	1	6	11572	PRSSF	187.50
42mm (4 holes)	1	4	11680	PRSSF	210.09
54mm (4 holes)	1	2	11681	PRSSF	259.03
76.1mm (4 holes)	1	0	20412	PRSSF	409.30
88.9mm (8 holes)	1	0	20413	PRSSF	486.37
108mm (8 holes)	1	0	20414	PRSSF	577.34
139.7mm	1	0	11472	PRLSF	558.19
168.3mm	1	0	11473	PRLSF	641.68

**SS1V transition for grooved coupling, press-fit x groove**



dimension	pack 1 qty	pack 2 qty	code	price cat	£ each
28mm x 34mm	10	30	11675	PRSSF	72.81
35mm x 42mm	10	30	11676	PRSSF	82.21
54mm x 60mm	5	15	11678	PRSSF	156.72
76.1mm x 76.1mm (C)	2	0	20461	PRSSF	371.00
88.9mm x 88.9mm (C)	2	0	20462	PRSSF	454.62
108mm x 114mm (C)	2	0	20463	PRSSF	561.75

stainless

SS2 straight female connector, press-fit x BSP parallel female thread



dimension	pack 1 qty	pack 2 qty	code	price cat	£ each
15mm x 1/2" (A)	10	130	11641	PRSSF	22.40
18mm x 1/2" (A)	10	120	11643	PRSSF	23.63
22mm x 1/2"	10	100	11646	PRSSF	25.25
22mm x 3/4"	10	100	11647	PRSSF	29.69
28mm x 1/2"	10	40	11631	PRSSF	37.17
28mm x 3/4"	10	40	11650	PRSSF	40.79
28mm x 1"	10	60	11648	PRSSF	46.08
35mm x 1"	10	20	11652	PRSSF	48.96
35mm x 1 1/4"	10	30	11653	PRSSF	50.42
35mm x 1 1/2"	10	20	11632	PRSSF	50.42
42mm x 1 1/2"	4	24	11654	PRSSF	77.60
54mm x 2"	4	12	11657	PRSSF	116.12

SS3 straight male connector, press-fit x BSP taper male thread



dimension	pack 1 qty	pack 2 qty	code	price cat	£ each
12mm x 1/2" (A)	10	50	11534	PRSSF	20.81
15mm x 1/2" (A)	10	200	11658	PRSSF	20.81
18mm x 1/2" (A)	10	160	11660	PRSSF	22.89
22mm x 1/2"	10	70	11662	PRSSF	25.16
22mm x 3/4"	10	100	11664	PRSSF	25.95
22mm x 1"	10	60	11663	PRSSF	27.22
28mm x 3/4"	10	50	11642	PRSSF	31.60
28mm x 1"	10	60	11665	PRSSF	32.81
28mm x 1 1/4"	10	30	11666	PRSSF	40.78
35mm x 1"	10	40	11667	PRSSF	44.75
35mm x 1 1/4"	5	40	11670	PRSSF	48.03
35mm x 1 1/2"	10	20	11645	PRSSF	48.03
42mm x 1 1/4"	4	12	11668	PRSSF	67.97
42mm x 1 1/2"	4	24	11671	PRSSF	69.99
54mm x 1 1/2"	4	16	11656	PRSSF	94.09
54mm x 2"	4	12	11674	PRSSF	94.09
76.1mm x 2 1/2" (C)	2	0	20458	PRSSF	525.91
88.9mm x 3" (C)	2	0	20459	PRSSF	607.26

SS2LC slip long connector, press-fit x BSP parallel female thread



dimension	pack 1 qty	pack 2 qty	code	price cat	£ each
22mm x 1/2"	10	60	11590	PRSSF	59.68
22mm x 3/4"	10	60	11591	PRSSF	61.55
28mm x 1/2"	10	40	11592	PRSSF	70.79
28mm x 3/4"	10	40	11593	PRSSF	80.18

stainless

SS6 reducer, larger end male for insertion into fitting x press-fit



dimension	pack 1 qty	pack 2 qty	code	price cat	£ each
18 x 15mm (A)	10	200	11712	PRSSF	11.80
22 x 15mm (A)	10	140	11713	PRSSF	13.01
22 x 18mm (A)	10	120	11714	PRSSF	13.53
28 x 15mm (A)	10	70	11715	PRSSF	14.73
28 x 18mm (A)	10	100	11716	PRSSF	15.00
28 x 22mm	10	80	11717	PRSSF	15.27
35 x 18mm (A)	5	50	11718	PRSSF	17.81
35 x 22mm	5	50	11719	PRSSF	18.62
35 x 28mm	5	60	11720	PRSSF	23.10
42 x 22mm (C)	4	24	11659	PRSSF	59.56
42 x 28mm	4	24	11722	PRSSF	32.25
42 x 35mm	4	24	11723	PRSSF	36.56
54 x 22mm (C)	4	16	11724	PRSSF	63.17
54 x 28mm (C)	4	16	11725	PRSSF	68.70
54 x 35mm	4	16	11726	PRSSF	71.82
54 x 42mm	4	16	11727	PRSSF	75.85
76.1 x 42mm (C)	4	0	20460	PRSSF	84.12
76.1 x 54mm (C)	4	0	20422	PRSSF	133.91
88.9 x 54mm (C)	4	0	20423	PRSSF	144.51
88.9 x 76.1mm (C)	4	0	20424	PRSSF	178.15
108 x 54mm (C)	2	0	20425	PRSSF	196.92
108 x 76.1mm (C)	2	0	20426	PRSSF	204.59
108 x 88.9mm (C)	2	0	20427	PRSSF	226.85
139.7 x 88.9mm	1	0	11474	PRLSF	557.58
139.7 x 108mm	1	0	11475	PRLSF	557.58
168.3 x 88.9mm	1	0	11476	PRLSF	677.57
168.3 x 108mm	1	0	11477	PRLSF	677.57
168.3 x 139.7mm	1	0	11478	PRLSF	677.57

SS12 90° elbow, press-fit x press-fit



dimension	pack 1 qty	pack 2 qty	code	price cat	£ each
15mm (A)	10	150	11620	PRSSF	15.62
18mm (A)	10	90	11621	PRSSF	17.97
22mm	10	60	11622	PRSSF	21.88
28mm	5	30	11623	PRSSF	27.58
35mm	5	20	11624	PRSSF	43.39
42mm	2	8	11625	PRSSF	72.46
54mm	2	8	11626	PRSSF	100.05
76.1mm (C)	2	0	20406	PRSSF	241.71
88.9mm (C)	2	0	20407	PRSSF	293.78
108mm (C)	2	0	20408	PRSSF	401.66
139.7mm	1	0	11479	PRLSF	674.08
168.3mm	1	0	11480	PRLSF	895.37

SS12S 90° street elbow, press-fit x male end for insertion into fitting



dimension	pack 1 qty	pack 2 qty	code	price cat	£ each
15mm (A)	10	120	11634	PRSSF	15.34
18mm (A)	10	60	11635	PRSSF	17.49
22mm	5	60	11636	PRSSF	21.22
28mm	5	30	11637	PRSSF	26.50
35mm	5	10	11638	PRSSF	42.60
42mm	2	8	11639	PRSSF	69.00
54mm	2	6	11640	PRSSF	99.38
76.1mm (C)	2	0	20409	PRSSF	241.71
88.9mm (C)	2	0	20410	PRSSF	293.78
108mm (C)	2	0	20411	PRSSF	401.66
139.7mm	1	0	11481	PRLSF	674.08
168.3mm	1	0	11482	PRLSF	895.37

stainless

SS13 male elbow, press-fit x BSP taper male thread



dimension	pack 1 qty	pack 2 qty	code	price cat	£ each
15mm x 1/2" (A)	10	80	11687	PRSSF	28.68
22mm x 3/4"	10	60	11689	PRSSF	39.55
28mm x 1"	10	30	11690	PRSSF	50.42
35mm x 1 1/4"	5	20	11691	PRSSF	72.20
42mm x 1 1/2"	2	16	11692	PRSSF	127.69
54mm x 2"	2	8	11693	PRSSF	163.18

SS14 female elbow, press-fit x BSP parallel female thread



dimension	pack 1 qty	pack 2 qty	code	price cat	£ each
15mm x 1/2" (A)	10	80	11682	PRSSF	32.80
22mm x 1/2"	10	50	11683	PRSSF	42.64
22mm x 3/4"	10	50	11684	PRSSF	44.06
28mm x 1/2"	5	30	11600	PRSSF	52.72
28mm x 1"	10	30	11685	PRSSF	57.14
35mm x 1/2"	5	10	11602	PRSSF	69.12

SS19S 15° bend, male x male



dimension	pack 1 qty	pack 2 qty	code	price cat	£ each
28mm	10	40	11550	PRSSF	31.05
35mm	5	15	11551	PRSSF	52.95
42mm	2	20	11552	PRSSF	68.92
54mm	2	10	11553	PRSSF	86.23

SS19S 60° bend, male x male



dimension	pack 1 qty	pack 2 qty	code	price cat	£ each
28mm	5	30	11555	PRSSF	59.43
35mm	4	12	11556	PRSSF	88.76
42mm	5	25	11557	PRSSF	120.49
54mm	2	6	11558	PRSSF	152.18

SS19S 90° bend, male x male



dimension	pack 1 qty	pack 2 qty	code	price cat	£ each
22mm	10	30	11561	PRSSF	50.38
28mm	5	20	11562	PRSSF	59.43
35mm	4	8	11563	PRSSF	88.76
42mm	2	4	11564	PRSSF	120.49
54mm	2	4	11565	PRSSF	152.18

**stainless**

**SS21 45° obtuse elbow, press-fit x press-fit**



dimension	pack 1 qty	pack 2 qty	code	price cat	£ each
15mm (A)	10	150	11604	PRSSF	21.22
18mm (A)	10	120	11605	PRSSF	22.61
22mm	10	70	11606	PRSSF	26.43
28mm	10	40	11607	PRSSF	30.68
35mm	5	25	11608	PRSSF	36.01
42mm	2	16	11609	PRSSF	57.94
54mm	2	8	11610	PRSSF	75.28
76.1mm (C)	2	0	20400	PRSSF	230.65
88.9mm (C)	2	0	20401	PRSSF	275.15
108mm (C)	2	0	20402	PRSSF	375.64
139.7mm	1	0	11483	PRLSF	674.08
168.3mm	1	0	11484	PRLSF	895.37

**SS24 equal tee, press-fit on all ends**



dimension	pack 1 qty	pack 2 qty	code	price cat	£ each
15mm (A)	10	80	11735	PRSSF	25.62
18mm (A)	10	40	11737	PRSSF	29.15
22mm	10	40	11740	PRSSF	31.43
28mm	5	25	11744	PRSSF	36.74
35mm	5	15	11749	PRSSF	46.56
42mm	4	8	11753	PRSSF	66.05
54mm	2	6	11758	PRSSF	79.08
76.1mm (C)	2	0	20431	PRSSF	435.17
88.9mm (C)	2	0	20432	PRSSF	476.02
108mm (C)	2	0	20433	PRSSF	587.62
139.7mm	1	0	11487	PRLSF	975.85
168.3mm	1	0	11488	PRLSF	1220.87

**SS21S obtuse street elbow, press-fit x male end for insertion into fitting**



dimension	pack 1 qty	pack 2 qty	code	price cat	£ each
15mm (A)	10	150	11611	PRSSF	20.81
18mm (A)	10	120	11612	PRSSF	22.12
22mm	10	60	11613	PRSSF	25.51
28mm	10	40	11614	PRSSF	29.87
35mm	5	25	11615	PRSSF	33.98
42mm	4	16	11616	PRSSF	54.82
54mm	2	8	11617	PRSSF	71.37
76.1mm (C)	2	0	20403	PRSSF	211.94
88.9mm (C)	2	0	20404	PRSSF	252.92
108mm (C)	2	0	20405	PRSSF	345.93
139.7mm	1	0	11485	PRLSF	674.08
168.3mm	1	0	11486	PRLSF	895.37

stainless

SS25 tee, reduced branch, press-fit on all ends



dimension	pack 1 qty	pack 2 qty	code	price cat	£ each
18 x 15mm (A)	10	60	11736	PRSSF	25.38
22 x 15mm (A)	10	50	11738	PRSSF	26.88
22 x 18mm (A)	10	50	11739	PRSSF	27.78
28 x 15mm (A)	5	30	11741	PRSSF	32.58
28 x 18mm (A)	10	30	11742	PRSSF	33.46
28 x 22mm	5	30	11743	PRSSF	35.28
35 x 15mm (A)	5	20	11745	PRSSF	40.26
35 x 18mm (A)	5	20	11746	PRSSF	40.85
35 x 22mm	5	20	11747	PRSSF	41.86
35 x 28mm	5	20	11748	PRSSF	43.66
42 x 22mm	4	12	11750	PRSSF	59.95
42 x 28mm	4	12	11751	PRSSF	62.05
42 x 35mm	4	12	11752	PRSSF	63.94
54 x 22mm	2	8	11754	PRSSF	67.94
54 x 28mm	2	8	11755	PRSSF	69.88
54 x 35mm	2	8	11756	PRSSF	72.20
54 x 42mm	2	8	11757	PRSSF	74.31
76.1 x 22mm (C)	2	0	20434	PRSSF	327.34
76.1 x 28mm (C)	2	0	20435	PRSSF	353.31
76.1 x 35mm (C)	2	0	20436	PRSSF	379.33
76.1 x 42mm (C)	2	0	20437	PRSSF	409.15
76.1 x 54mm (C)	2	0	20438	PRSSF	435.17
88.9 x 22mm (C)	2	0	20439	PRSSF	345.93
88.9 x 28mm (C)	2	0	20440	PRSSF	371.13
88.9 x 35mm (C)	2	0	20441	PRSSF	397.88
88.9 x 42mm (C)	2	0	20442	PRSSF	427.71
88.9 x 54mm (C)	2	0	20443	PRSSF	446.27
88.9 x 76.1mm (C)	2	0	20444	PRSSF	476.02
108 x 22mm (C)	2	0	20445	PRSSF	368.22
108 x 28mm (C)	2	0	20446	PRSSF	390.44
108 x 35mm (C)	2	0	20447	PRSSF	427.71
108 x 42mm (C)	2	0	20448	PRSSF	446.27
108 x 54mm (C)	2	0	20449	PRSSF	483.56
108 x 76.1mm (C)	2	0	20450	PRSSF	509.55
108 x 88.9mm (C)	2	0	20451	PRSSF	583.92
139.7 x 76.1mm	1	0	11489	PRLSF	855.03
139.7 x 88.9mm	1	0	11490	PRLSF	855.03
139.7 x 108mm	1	0	11491	PRLSF	870.50
168.3 x 76.1mm	1	0	11492	PRLSF	1052.94
168.3 x 88.9mm	1	0	11493	PRLSF	1052.94
168.3 x 108mm	1	0	11494	PRLSF	1052.94
168.3 x 139.7mm	1	0	11495	PRLSF	1143.51

SS30 female branch tee, press-fit x BSP parallel female branch



dimension	pack 1 qty	pack 2 qty	code	price cat	£ each
15mm x 1/2" (A)	10	70	11759	PRSSF	28.03
18mm x 1/2" (A)	10	50	11760	PRSSF	28.27
22mm x 1/2"	10	40	11762	PRSSF	30.70
22mm x 3/4"	10	40	11763	PRSSF	34.38
28mm x 1/2"	5	30	11765	PRSSF	33.87
28mm x 3/4"	10	30	11766	PRSSF	40.08
35mm x 1/2"	5	20	11767	PRSSF	40.78
35mm x 3/4"	5	20	11768	PRSSF	50.49
42mm x 1/2"	4	16	11769	PRSSF	49.70
42mm x 3/4"	4	12	11770	PRSSF	55.45
54mm x 1/2"	2	8	11771	PRSSF	59.05
54mm x 3/4"	2	8	11773	PRSSF	64.79
54mm x 1"	2	8	11630	PRSSF	90.66
54mm x 2"	2	6	11772	PRSSF	128.33
76.1mm x 3/4" (C)	2	0	20452	PRSSF	356.09
76.1mm x 2" (C)	2	0	20453	PRSSF	393.65
88.9mm x 3/4" (C)	2	0	20454	PRSSF	386.92
88.9mm x 2" (C)	2	0	20455	PRSSF	410.88
108mm x 3/4" (C)	2	0	20456	PRSSF	465.56
108mm x 2" (C)	2	0	20457	PRSSF	496.48
139.7mm x 3/4" (A)	1	0	20464	PRSSF	664.89
139.7mm x 2"	1	0	20470	PRSSF	688.22

**stainless**

**SS61 stop end, for use on stainless steel tube**



dimension	pack 1 qty	pack 2 qty	code	price cat	£ each
15mm (A)	20	80	11701	PRSSF	10.43
18mm (A)	20	300	11702	PRSSF	10.91
22mm	10	150	11703	PRSSF	12.08
28mm	10	130	11704	PRSSF	17.11
35mm	5	75	11705	PRSSF	19.80
42mm	4	48	11706	PRSSF	27.78
54mm	4	24	11707	PRSSF	32.17
76.1mm (C)	2	0	20418	PRSSF	47.49
88.9mm (C)	2	0	20419	PRSSF	60.96
108mm (C)	2	0	20420	PRSSF	72.28

**SS69 straight male union connector press-fit x BSP taper male thread**



dimension	pack 1 qty	pack 2 qty	code	price cat	£ each
15mm x 1/2" (A)	2	50	11774	PRSSF	46.19
18mm x 1/2" (A)	2	60	11776	PRSSF	51.06
22mm x 1/2"	2	40	11721	PRSSF	66.88
22mm x 3/4"	2	40	11779	PRSSF	68.47
22mm x 1"	2	30	11764	PRSSF	71.18
28mm x 1"	2	30	11781	PRSSF	91.21
35mm x 1 1/4"	2	16	11782	PRSSF	116.36
42mm x 1 1/2"	2	12	11783	PRSSF	134.57
54mm x 2"	2	4	11784	PRSSF	232.67

**SS68FF flat faced union adaptor, press fit x BSP female union end**



dimension	pack 1 qty	pack 2 qty	code	price cat	£ each
22mm x 1"	10	60	11891	PRSSF	60.91
35mm x 1 1/2"	4	32	11893	PRSSF	94.70
42mm x 1 3/4"	4	12	11894	PRSSF	119.39
54mm x 2 3/8"	4	8	11895	PRSSF	151.16

**SS69F straight female union connector press-fit x BSP parallel female thread**



dimension	pack 1 qty	pack 2 qty	code	price cat	£ each
15mm x 1/2" (A)	2	60	11785	PRSSF	46.19
18mm x 1/2" (A)	2	40	11787	PRSSF	51.06
22mm x 3/4"	2	40	11789	PRSSF	68.47
22mm x 1"	2	30	11798	PRSSF	71.18
28mm x 1"	2	26	11791	PRSSF	91.21
35mm x 1 1/4"	1	20	11792	PRSSF	116.36
42mm x 1 1/2"	2	8	11793	PRSSF	134.57
54mm x 2"	2	4	11794	PRSSF	232.67



stainless

SS75 expansion axial compensator, press-fit x press-fit



dimension	pack 1 qty	pack 2 qty	code	price cat	£ each
15mm	10	60	11540	PRSSF	204.33
18mm	10	60	11541	PRSSF	229.31
22mm	5	30	11542	PRSSF	250.17
28mm	5	20	11543	PRSSF	275.19
35mm	4	16	11544	PRSSF	333.57
42mm	2	12	11545	PRSSF	458.64
54mm	2	4	11546	PRSSF	552.47

SS76 expansion axial compensator, drum ends



dimension	pack 1 qty	pack 2 qty	code	price cat	£ each
76.1mm	2	0	20465	PRSSF	854.76
108mm	2	0	20467	PRSSF	1584.40

SS80 straight flexible hose



dimension	pack 1 qty	pack 2 qty	code	price cat	£ each
22 x 1000mm	10	0	11575	PRSSF	135.20
22 x 1500mm	10	0	11576	PRSSF	153.53
22 x 2000mm	10	0	11577	PRSSF	171.48
28 x 1000mm	10	0	11578	PRSSF	152.60
28 x 1500mm	10	0	11579	PRSSF	176.13
28 x 2000mm	10	0	11580	PRSSF	200.62

SS82 bent flexible hose



dimension	pack 1 qty	pack 2 qty	code	price cat	£ each
22mm x 800mm	10	0	11581	PRSSF	159.22
22mm x 1000mm	10	0	11582	PRSSF	166.85
22mm x 1500mm	10	0	11583	PRSSF	185.79
28mm x 800mm	10	0	11584	PRSSF	172.00
28mm x 1000mm	10	0	11585	PRSSF	181.83
28mm x 1500mm	10	0	11586	PRSSF	206.84

**stainless**

**SS600 stainless steel 316 HWG+S tube.  
6m lengths**



dimension	pack 1 qty	pack 2 qty	code	price cat	£ per metre
15 x 1.0mm (6m)	6	840	25050	PRSST	19.74
18 x 1.0mm (6m)	6	450	25051	PRSST	23.62
22 x 1.2mm (6m)	6	366	25052	PRSST	35.17
28 x 1.2mm (6m)	6	222	25053	PRSST	39.69
35 x 1.5mm (6m)	6	222	25054	PRSST	59.48
42 x 1.5mm (6m)	6	114	25055	PRSST	76.12
54 x 1.5mm (6m)	6	114	25056	PRSST	100.30
15 x 1.0mm (3m)	30	300	6118068	PRSST	20.75
18 x 1.0mm (3m)	30	300	6118079	PRSST	24.80
22 x 1.2mm (3m)	30	300	6118081	PRSST	36.95
28 x 1.2mm (3m)	30	300	6118090	PRSST	41.66
35 x 1.5mm (3m)	30	300	6118101	PRSST	62.44
42 x 1.5mm (3m)	30	300	6118112	PRSST	79.94
54 x 1.5mm (3m)	30	300	6118123	PRSST	105.35

**SS630 stainless steel 444 HS tube.  
6m lengths**



dimension	pack 1 qty	pack 2 qty	code	price cat	£ per metre
15 x 1.0mm	6	762	24000	PRSST	14.68
18 x 1.0mm	6	366	24001	PRSST	17.55
22 x 1.2mm	6	366	25072	PRSST	24.05
28 x 1.2mm	6	222	25073	PRSST	29.53
35 x 1.5mm	6	222	25074	PRSST	44.28
42 x 1.5mm	6	114	25075	PRSST	56.67
54 x 1.5mm	6	114	25076	PRSST	71.62

**SS650 stainless steel 304 HS tube**



dimension	pack 1 qty	pack 2 qty	code	price cat	£ per metre
76.1 x 2.0mm	6	144	24002	PRSST	125.18
88.9 x 2.0mm	6	96	24003	PRSST	143.17
108 x 2.0mm	6	78	24004	PRSST	172.55
139.7 x 2.0mm	6	42	11502	PRLST	244.63
168.3 x 2.0mm	6	54	11503	PRLST	296.49

**SS620 stainless steel 316 HWG+S tube.  
6m lengths**



dimension	pack 1 qty	pack 2 qty	code	price cat	£ per metre
76.1 x 2.0mm	6	144	25026	PRSST	186.91
88.9 x 2.0mm	6	96	25028	PRSST	213.82
108 x 2.0mm	6	78	25030	PRSST	257.75
139.7 x 2.0mm	6	42	11500	PRLST	378.93
168.3 x 2.0mm	6	54	11501	PRLST	415.64

**carbon**

**SC1 straight coupling, press-fit x press-fit**



dimension	pack 1 qty	pack 2 qty	code	price cat	£ each
15mm (A)	10	140	20136	PRSSF	3.64
18mm (A)	10	140	20137	PRSSF	3.82
22mm	10	80	20138	PRSSF	4.39
28mm	10	60	20139	PRSSF	5.53
35mm	5	40	20140	PRSSF	9.25
42mm	4	24	20141	PRSSF	12.41
54mm	4	16	20142	PRSSF	14.64
66.7mm (E)	2	4	20662	PRSSF	54.65
76.1mm (E)	4	0	20620	PRSSF	66.43
88.9mm (E)	4	0	20621	PRSSF	85.76
108mm (D) (E)	2	0	20622	PRSSF	118.03

**SC1FMF female metric flange. PN16. Press-fit x steel flange to EN1092-1:1997 (BS4504)**



dimension	pack 1 qty	pack 2 qty	code	price cat	£ each
35mm (4 holes)	1	6	20562	PRCAF	93.91
42mm (4 holes)	1	4	20563	PRCAF	110.67
54mm (4 holes)	1	2	20564	PRCAF	136.68
66.7mm (4 holes)	1	2	20685	PRSSF	155.16
76.1mm (4 holes)	1	0	20659	PRSSF	250.39
88.9mm (8 holes)	1	0	20660	PRSSF	297.48
108mm (8 holes)	1	0	20661	PRSSF	353.17

**SC1R straight reduced coupling, press-fit x press-fit**



dimension	pack 1 qty	pack 2 qty	code	price cat	£ each
28 x 22mm	10	80	20154	PRCAF	19.72

**SC1FMF6 female metric flange. PN6**



dimension	pack 1 qty	pack 2 qty	code	price cat	£ each
66.7mm	1	2	20734	PRCAF	155.16
76.1mm	1	0	20735	PRCAF	250.39
88.9mm	1	0	20736	PRCAF	297.48
108mm	1	0	20737	PRCAF	353.17

**carbon**

**SC1 straight coupling slip pattern, press-fit x press-fit**



dimension	pack 1 qty	pack 2 qty	code	price cat	£ each
15mm (A)	10	140	20144	PRSSF	4.13
18mm (A)	10	100	20145	PRSSF	4.77
22mm	10	60	20146	PRSSF	5.27
28mm	5	40	20147	PRSSF	6.66
35mm	5	20	20148	PRSSF	14.34
42mm	4	16	20149	PRSSF	15.61
54mm	2	8	20150	PRSSF	18.63
66.7mm (E)	2	4	20663	PRSSF	65.46
76.1mm (E)	2	0	20623	PRSSF	141.02
88.9mm (E)	2	0	20624	PRSSF	159.19
108mm (D) (E)	2	0	20625	PRSSF	191.07

**SC2 straight female connector, press-fit x ISO 7 female thread**



dimension	pack 1 qty	pack 2 qty	code	price cat	£ each
15mm x 1/2" (A)	10	130	20237	PRSSF	11.24
18mm x 1/2" (A)	10	120	20238	PRSSF	11.29
22mm x 1/2"	10	100	20245	PRCAF	13.47
22mm x 3/4"	10	100	20240	PRSSF	13.47
28mm x 1/2"	10	60	20244	PRCAF	17.06
28mm x 3/4"	10	60	20246	PRCAF	17.06
28mm x 1"	10	60	20241	PRSSF	17.06
35mm x 1 1/4"	10	30	20247	PRCAF	21.91
42mm x 1 1/2"	4	24	20209	PRCAF	31.52
54mm x 2"	4	12	20210	PRCAF	42.64

**SC1V transition for grooved coupling, press-fit x groove**



dimension	pack 1 qty	pack 2 qty	code	price cat	£ each
42mm x 48mm	5	20	20189	PRCAF	64.02
76.1mm x 76.1mm (E)	2	0	20731	PRCAF	154.31
88.9mm x 88.9mm (E)	2	0	20732	PRCAF	219.55
108mm x 114mm (D) (E)	2	0	20733	PRCAF	338.09

**SC2LC slip long connector, press-fit x BSP parallel female thread**



dimension	pack 1 qty	pack 2 qty	code	price cat	£ each
22mm x 3/4"	10	60	20324	PRCAF	40.98

carbon

SC3 straight male connector, press-fit x BSP taper male thread



SC6 reducer, larger end male for insertion into fitting x press-fit



dimension	pack 1 qty	pack 2 qty	code	price cat	£ each
15mm x 3/8" (A)	10	200	20227	PRSSF	11.24
15mm x 1/2" (A)	10	200	20228	PRSSF	11.24
18mm x 1/2" (A)	10	160	20229	PRSSF	11.62
18mm x 3/4" (A)	10	100	20230	PRSSF	13.47
22mm x 1/2"	10	70	20242	PRCAF	13.47
22mm x 3/4"	10	100	20231	PRSSF	13.47
22mm x 1"	10	60	20243	PRCAF	14.53
28mm x 3/4"	10	60	20236	PRCAF	17.06
28mm x 1"	10	60	20232	PRSSF	17.06
35mm x 1"	10	40	20567	PRCAF	21.91
35mm x 1 1/4"	5	40	20233	PRSSF	21.91
42mm x 1 1/2"	4	24	20234	PRSSF	24.44
54mm x 2"	4	12	20235	PRSSF	37.90
66.7mm x 2 1/2" (E)	2	4	20664	PRSSF	152.17
76.1mm x 2 1/2" (D) (E)	2	0	20713	PRCAF	263.33
88.9mm x 3" (D) (E)	2	0	20714	PRCAF	358.35

dimension	pack 1 qty	pack 2 qty	code	price cat	£ each
18 x 15mm (A)	10	200	20213	PRSSF	3.32
22 x 15mm (A)	10	140	20215	PRSSF	3.32
22 x 18mm (A)	10	120	20216	PRSSF	3.59
28 x 15mm (A)	10	70	20217	PRSSF	4.39
28 x 18mm (A)	10	100	20218	PRSSF	4.39
28 x 22mm	10	80	20219	PRSSF	4.55
35 x 22mm	5	50	20220	PRSSF	5.08
35 x 28mm	5	60	20221	PRSSF	5.48
42 x 22mm (C)	4	24	20248	PRCAF	8.96
42 x 28mm	4	24	20212	PRCAF	9.93
42 x 35mm	4	24	20222	PRSSF	11.86
54 x 22mm (C)	4	16	20223	PRSSF	34.31
54 x 28mm (C)	4	16	20224	PRSSF	34.50
54 x 35mm	4	16	20226	PRCAF	35.38
54 x 42mm	4	16	20225	PRSSF	36.31
66.7 x 28mm (E)	2	4	20665	PRSSF	57.13
66.7 x 35mm (E)	2	4	20666	PRSSF	53.41
66.7 x 42mm (E)	2	4	20667	PRSSF	53.81
66.7 x 54mm (E)	2	4	20668	PRSSF	57.08
76.1 x 42mm (E)	4	0	20715	PRCAF	64.07
76.1 x 54mm (E)	4	0	20639	PRSSF	76.67
76.1 x 66.7mm (E)	2	4	20669	PRSSF	60.62
88.9 x 54mm (E)	4	0	20640	PRSSF	93.28
88.9 x 66.7mm (E)	2	4	20670	PRSSF	91.63
88.9 x 76.1mm (E)	4	0	20641	PRSSF	119.71
108 x 66.7mm (D) (E)	2	4	20671	PRSSF	117.08
108 x 76.1mm (D) (E)	2	0	20642	PRSSF	124.06
108 x 88.9mm (D) (E)	2	0	20643	PRSSF	138.75

**carbon**

SC7 female adaptor, male end for insertion into a fitting x BSP parallel female thread



dimension	pack 1 qty	pack 2 qty	code	price cat	£ each
15mm x 1/2"	10	150	20574	PRCAF	10.01
22mm x 1/2"	10	70	20256	PRCAF	11.78
22mm x 3/4"	10	100	20257	PRCAF	13.66

SC12S street elbow, press-fit x male end for insertion into fitting



dimension	pack 1 qty	pack 2 qty	code	price cat	£ each
15mm (A)	10	120	20163	PRSSF	5.25
18mm (A)	10	80	20164	PRSSF	6.13
22mm	10	60	20165	PRSSF	6.88
28mm	5	30	20166	PRSSF	9.38
35mm	5	20	20167	PRSSF	23.40
42mm	2	8	20168	PRSSF	37.47
54mm	2	6	20169	PRSSF	44.77
66.7mm (E)	1	2	20673	PRSSF	83.94
76.1mm (E)	2	0	20629	PRSSF	147.82
88.9mm (E)	2	0	20630	PRSSF	179.79
108mm (D) (E)	2	0	20631	PRSSF	245.63

SC12 elbow, press-fit x press-fit



dimension	pack 1 qty	pack 2 qty	code	price cat	£ each
15mm (A)	10	150	20155	PRSSF	5.25
18mm (A)	10	90	20156	PRSSF	6.13
22mm	10	60	20157	PRSSF	6.88
28mm	5	30	20158	PRSSF	9.38
35mm	5	20	20159	PRSSF	23.40
42mm	2	8	20160	PRSSF	37.47
54mm	2	8	20161	PRSSF	44.77
66.7mm (E)	1	2	20672	PRSSF	92.25
76.1mm (E)	2	0	20626	PRSSF	138.82
88.9mm (E)	2	0	20627	PRSSF	175.40
108mm (D) (E)	2	0	20628	PRSSF	240.39

SC14 elbow, press-fit x BSP parallel female thread



dimension	pack 1 qty	pack 2 qty	code	price cat	£ each
22mm x 1/2"	10	50	20345	PRCAF	32.67
28mm x 1/2"	5	30	20347	PRCAF	36.68
28mm x 1"	5	30	20349	PRCAF	45.81

carbon

SC14A angle adaptor, press-fit x BSP parallel female thread



dimension	pack 1 qty	pack 2 qty	code	price cat	£ each
28mm x 1/2"	5	30	20356	PRCAF	38.48

SC19S elbow, male x male



dimension	pack 1 qty	pack 2 qty	code	price cat	£ each
22mm	10	30	20370	PRCAF	16.75
42mm	2	4	20373	PRCAF	53.42
54mm	2	0	20374	PRCAF	73.60

SC21 obtuse elbow, press-fit x press-fit



dimension	pack 1 qty	pack 2 qty	code	price cat	£ each
15mm (A)	10	150	20170	PRSSF	6.23
18mm (A)	10	120	20171	PRSSF	6.56
22mm	10	70	20172	PRSSF	6.96
28mm	10	40	20173	PRSSF	9.44
35mm	5	25	20174	PRSSF	18.58
42mm	4	16	20175	PRSSF	23.28
54mm	2	8	20176	PRSSF	26.32
66.7mm (E)	1	2	20674	PRSSF	88.47
76.1mm (E)	2	0	20632	PRSSF	117.36
88.9mm (E)	2	0	20633	PRSSF	149.81
108mm (D) (E)	2	0	20634	PRSSF	215.29

SC21S obtuse street elbow, press-fit x male end for insertion into fitting



dimension	pack 1 qty	pack 2 qty	code	price cat	£ each
15mm (A)	10	150	20177	PRSSF	5.69
18mm (A)	10	120	20178	PRSSF	5.82
22mm	10	60	20179	PRSSF	6.24
28mm	10	40	20180	PRSSF	9.44
35mm	5	25	20181	PRSSF	17.06
42mm	4	16	20182	PRSSF	22.79
54mm	2	8	20183	PRSSF	26.03
66.7mm (E)	1	2	20675	PRSSF	74.22
76.1mm (E)	2	0	20635	PRSSF	129.66
88.9mm (E)	2	0	20636	PRSSF	154.78
108mm (D) (E)	2	0	20637	PRSSF	211.68

**carbon**

**SC24 equal tee, press-fit on all ends**



**SC25 tee, reduced branch, press-fit on all ends**



dimension	pack 1 qty	pack 2 qty	code	price cat	£ each
15mm (A)	10	80	20249	PRSSF	9.95
18mm (A)	10	40	20250	PRSSF	10.74
22mm	10	40	20251	PRSSF	11.54
28mm	5	25	20252	PRSSF	15.44
35mm	5	15	20253	PRSSF	24.07
42mm	4	8	20254	PRSSF	35.57
54mm	2	6	20255	PRSSF	42.62
66.7mm (E)	1	2	20676	PRSSF	169.63
76.1mm (E)	2	0	20644	PRSSF	248.45
88.9mm (E)	2	0	20645	PRSSF	287.16
108mm (D) (E)	2	0	20646	PRSSF	349.58

dimension	pack 1 qty	pack 2 qty	code	price cat	£ each
18 x 18 x 15mm (A)	10	60	20258	PRSSF	10.74
22 x 22 x 15mm (A)	10	50	20260	PRSSF	11.29
22 x 22 x 18mm (A)	10	50	20261	PRSSF	11.54
28 x 28 x 15mm (A)	5	30	20262	PRSSF	15.30
28 x 28 x 18mm (A)	5	30	20263	PRSSF	15.83
28 x 28 x 22mm	5	30	20264	PRSSF	16.60
35 x 35 x 15mm (A)	5	20	20265	PRSSF	22.42
35 x 35 x 18mm (A)	5	20	20266	PRSSF	23.84
35 x 35 x 22mm	5	20	20267	PRSSF	24.24
35 x 35 x 28mm	5	20	20268	PRSSF	24.61
42 x 42 x 22mm	4	12	20269	PRSSF	32.49
42 x 42 x 28mm	4	12	20270	PRSSF	33.67
42 x 42 x 35mm	4	12	20271	PRSSF	32.86
54 x 54 x 22mm	2	8	20272	PRSSF	38.72
54 x 54 x 28mm	2	8	20273	PRSSF	39.46
54 x 54 x 35mm	2	8	20274	PRSSF	40.63
54 x 54 x 42mm	2	8	20275	PRSSF	42.60
66.7 x 66.7 x 28mm (E)	1	2	20677	PRSSF	164.30
66.7 x 66.7 x 35mm (E)	1	2	20678	PRSSF	165.84
66.7 x 66.7 x 42mm (E)	1	2	20679	PRSSF	170.29
66.7 x 66.7 x 54mm (E)	1	2	20680	PRSSF	173.56
76.1 x 76.1 x 22mm (E)	2	0	20686	PRCAF	268.66
76.1 x 76.1 x 28mm (E)	2	0	20687	PRCAF	268.66
76.1 x 76.1 x 35mm (E)	2	0	20688	PRCAF	268.66
76.1 x 76.1 x 42mm (E)	2	0	20689	PRCAF	268.66
76.1 x 76.1 x 54mm (E)	2	0	20647	PRSSF	266.19
76.1 x 76.1 x 66.7mm (E)	1	1	20681	PRSSF	251.14
88.9 x 88.9 x 22mm (E)	2	0	20690	PRCAF	292.01
88.9 x 88.9 x 28mm (E)	2	0	20691	PRCAF	292.01
88.9 x 88.9 x 35mm (E)	2	0	20692	PRCAF	292.01
88.9 x 88.9 x 42mm (E)	2	0	20693	PRCAF	292.01
88.9 x 88.9 x 54mm (E)	2	0	20694	PRCAF	292.01
88.9 x 88.9 x 66.7mm (E)	1	1	20682	PRSSF	274.70
88.9 x 88.9 x 76.1mm (E)	2	0	20648	PRSSF	291.20
108 x 108 x 22mm (D) (E)	2	0	20695	PRCAF	327.04
108 x 108 x 28mm (D) (E)	2	0	20696	PRCAF	327.04
108 x 108 x 35mm (D) (E)	2	0	20697	PRCAF	350.38
108 x 108 x 42mm (D) (E)	2	0	20698	PRCAF	350.38
108 x 108 x 54mm (D) (E)	2	0	20699	PRCAF	350.38
108 x 108 x 76.1mm (D) (E)	2	0	20700	PRCAF	350.38
108 x 108 x 88.9mm (D) (E)	2	0	20649	PRSSF	357.26



**carbon**

**SC28 tee, both ends reduced, press-fit on all ends**



dimension	pack 1 qty	pack 2 qty	code	price cat	£ each
15 x 15 x 22mm (A)	10	60	20710	PRCAF	17.66
22 x 22 x 28mm	5	30	20712	PRCAF	18.02

**SC30 female branch tee, press-fit x BSP parallel female branch**



dimension	pack 1 qty	pack 2 qty	code	price cat	£ each
15mm x 1/2" (A)	10	70	20281	PRSSF	14.26
18mm x 1/2" (A)	10	50	20282	PRSSF	14.26
22mm x 1/2"	10	50	20283	PRSSF	15.70
22mm x 3/4"	10	40	20288	PRCAF	17.65
28mm x 1/2"	5	30	20284	PRSSF	18.22
28mm x 3/4"	5	30	20289	PRCAF	21.25
28mm x 1"	5	30	20279	PRCAF	24.88
35mm x 1/2"	5	20	20285	PRSSF	24.88
35mm x 3/4"	5	20	20290	PRCAF	30.31
35mm x 1"	5	20	20280	PRCAF	38.72
42mm x 1/2"	4	16	20286	PRSSF	38.72
42mm x 3/4"	4	12	20291	PRCAF	40.88
42mm x 1"	4	12	20294	PRCAF	42.08
54mm x 1/2"	2	8	20287	PRSSF	42.60
54mm x 3/4"	2	8	20292	PRCAF	52.85
54mm x 1"	2	8	20293	PRCAF	52.85
66.7mm x 3/4" (E)	1	2	20683	PRSSF	140.65
76.1mm x 3/4" (E)	2	0	20650	PRSSF	217.89
88.9mm x 3/4" (E)	2	0	20651	PRSSF	236.71
108mm x 3/4" (D) (E)	2	0	20652	PRSSF	284.80

**SC51 pass, press-fit all ends**



dimension	pack 1 qty	pack 2 qty	code	price cat	£ each
28 x 15mm	5	15	20597	PRCAF	30.11

**SC61 stop end, for use on carbon steel tube**



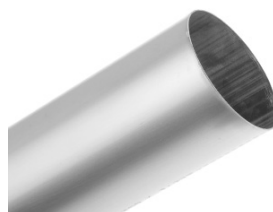
dimension	pack 1 qty	pack 2 qty	code	price cat	£ each
15mm (A)	20	80	20295	PRSSF	6.66
18mm (A)	20	300	20296	PRSSF	7.10
22mm	10	150	20297	PRSSF	7.58
28mm	10	130	20298	PRSSF	11.24
35mm	5	75	20299	PRSSF	12.80
42mm	4	48	20300	PRSSF	20.08
54mm	4	32	20301	PRSSF	22.85
66.7mm (E)	1	4	20684	PRSSF	54.39
76.1mm (E)	2	0	20656	PRSSF	44.94
88.9mm (E)	2	0	20657	PRSSF	57.67
108mm (D) (E)	2	0	20658	PRSSF	68.45

**carbon**

**SC69C straight male union connector  
press-fit x BSP taper male thread**



**SC640 carbon steel galvanised  
heating tube. 3m & 6m lengths**



dimension	pack 1 qty	pack 2 qty	code	price cat	£ each
15mm x 1/2"	2	50	20380	PRCAF	14.26
18mm x 1/2"	2	60	20381	PRCAF	16.15
22mm x 3/4"	2	40	20382	PRCAF	20.99
28mm x 1"	2	30	20383	PRCAF	33.26
35mm x 1 1/4"	2	16	20384	PRCAF	45.38
42mm x 1 1/2"	2	12	20385	PRCAF	68.83
54mm x 2"	2	4	20312	PRSSF	132.00

dimension	pack 1 qty	pack 2 qty	code	price cat	£ per metre
15mm x 1.2mm	30	630	45080	PRCAT	7.53
18mm x 1.2mm	30	750	45081	PRSSST	9.02
22mm x 1.5mm	30	630	45082	PRSSST	11.98
28mm x 1.5mm	30	300	45083	PRSSST	16.91
35mm x 1.5mm	30	210	45084	PRSSST	21.86
42mm x 1.5mm	30	210	45085	PRSSST	29.87
54mm x 1.5mm	30	180	45086	PRSSST	38.76
12mm x 1.2mm	6	1290	25079	PRCAT	6.28
15mm x 1.2mm	6	1290	25080	PRSSST	6.82
18mm x 1.2mm	6	1524	25081	PRSSST	8.18
22mm x 1.5mm	6	1290	25082	PRSSST	10.92
28mm x 1.5mm	6	624	25083	PRSSST	15.38
35mm x 1.5mm	6	402	25084	PRSSST	19.90
42mm x 1.5mm	6	402	25085	PRSSST	27.16
54mm x 1.5mm	6	402	25086	PRSSST	35.22
66.7mm x 1.5mm	6	228	25090	PRSSST	49.35
76.1mm x 2.0mm	6	234	25087	PRSSST	77.76
88.9mm x 2.0mm	6	114	25088	PRSSST	88.00
108mm x 2.0mm	6	114	25089	PRSSST	102.76

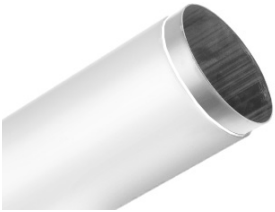
**SC69F straight female union connector  
press-fit x BSP parallel female thread**



dimension	pack 1 qty	pack 2 qty	code	price cat	£ each
15mm x 1/2" (A)	2	50	20313	PRSSF	29.81
18mm x 1/2" (A)	2	60	20315	PRSSF	32.17
22mm x 3/4"	2	40	20317	PRSSF	44.10
28mm x 1"	2	30	20319	PRSSF	49.07
35mm x 1 1/4"	2	16	20320	PRSSF	69.76
42mm x 1 1/2"	2	12	20321	PRSSF	103.13
54mm x 2"	2	4	20322	PRSSF	132.00

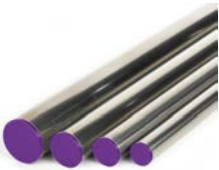
**carbon**

SC660 plastic coated galvanised carbon steel heating tube. 6m lengths. Wall thickness dimensions include plastic coating of 1mm thickness



dimension	pack 1 qty	pack 2 qty	code	price cat	£ per metre
54mm x 2.5mm	6	90	25066	PRCAT	37.50

SC645 galvanised sprinkler tube. 6m lengths



dimension	pack 1 qty	pack 2 qty	code	price cat	£ per metre
88.9mm x 2.0mm	6	96	25100	PRCAT	88.00

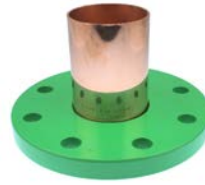
gas

SG1/G7270 straight coupling, press-fit x press-fit



dimension	pack 1 qty	pack 2 qty	code	price cat	£ each
15mm	5	100	39700	PRSCU	4.45
18mm	5	100	39699	PRSCU	6.21
22mm	5	70	39701	PRSCU	6.87
28mm	5	50	39702	PRSCU	13.72
35mm	1	20	39703	PRSCU	17.39
42mm	1	10	39704	PRSCU	31.35
54mm	1	10	39705	PRSCU	40.03
66.7mm	1	0	39302	PRSCU	96.53
76.1mm	1	0	39303	PRSCU	126.94
108mm	1	0	39305	PRSCU	219.61

SG1FMM/G7520 composite male metric flange PN16. Male end for insertion into fitting x powder coated steel flange to EN1092-1:1997 (BS4504)



dimension	pack 1 qty	pack 2 qty	code	price cat	£ each
66.7mm (4 holes)	1	0	39395	PRSCU	261.61
76.1mm (8 holes)	1	0	39396	PRSCU	306.10
108mm (8 holes)	1	0	39398	PRSCU	362.21

SG1 slip/G7270S straight coupling slip pattern, press-fit x press-fit

SG1FMF/G7510 composite female metric flange PN16. Press-fit x powder coated steel flange to EN1092-1:1997 (BS4504)



dimension	pack 1 qty	pack 2 qty	code	price cat	£ each
66.7mm (4 holes)	1	0	39281	PRSCU	288.48
76.1mm (8 holes)	1	0	39282	PRSCU	344.37
108mm (8 holes)	1	0	39284	PRSCU	408.93



dimension	pack 1 qty	pack 2 qty	code	price cat	£ each
15mm	5	75	39710	PRSCU	8.83
18mm	5	75	39709	PRSCU	11.48
22mm	5	50	39711	PRSCU	13.72
28mm	5	50	39712	PRSCU	20.63
35mm	1	15	39713	PRSCU	26.14
42mm	1	5	39714	PRSCU	37.61
54mm	1	10	39715	PRSCU	47.99
66.7mm	1	0	39307	PRSCU	139.98
76.1mm	1	0	39308	PRSCU	170.30
108mm	1	0	39310	PRSCU	286.37

gas

SG2/G6270G straight female connector, press-fit x BSP parallel female thread



SG3/G6243G straight male connector, press-fit x BSP taper male thread



dimension	pack 1 qty	pack 2 qty	code	price cat	£ each
15mm x 1/2"	5	100	39720	PRSCU	17.83
15mm x 3/4"	5	100	39721	PRSCU	18.71
18mm x 1/2"	5	100	39716	PRSCU	24.95
18mm x 3/4"	5	100	39717	PRSCU	28.05
22mm x 1/2"	5	100	39722	PRSCU	27.57
22mm x 3/4"	5	75	39723	PRSCU	23.50
28mm x 1"	5	50	39724	PRSCU	31.69
35mm x 1 1/4"	1	20	39725	PRSCU	61.85
42mm x 1 1/2"	1	10	39726	PRSCU	88.46
54mm x 2"	1	8	39727	PRSCU	151.64

dimension	pack 1 qty	pack 2 qty	code	price cat	£ each
15mm x 1/2"	5	100	39730	PRSCU	14.09
15mm x 3/4"	5	100	39731	PRSCU	10.29
18mm x 1/2"	5	125	39728	PRSCU	17.80
18mm x 3/4"	5	100	39729	PRSCU	18.52
22mm x 1/2"	5	100	39732	PRSCU	12.27
22mm x 3/4"	5	70	39733	PRSCU	20.22
22mm x 1"	5	75	39734	PRSCU	12.88
28mm x 3/4"	5	75	39737	PRSCU	28.90
28mm x 1"	5	50	39735	PRSCU	27.03
28mm x 1 1/4"	5	50	39736	PRSCU	35.48
35mm x 1"	1	20	39738	PRSCU	48.12
35mm x 1 1/4"	1	20	39739	PRSCU	48.83
42mm x 1 1/4"	1	20	39741	PRSCU	88.86
42mm x 1 1/2"	1	15	39740	PRSCU	65.51
54mm x 2"	1	10	39742	PRSCU	126.42
66.7mm x 2 1/2"	1	0	39311	PRSCU	242.69
76.1mm x 3"	1	0	39313	PRSCU	419.99
108mm x 4"	1	0	39315	PRSCU	727.21

gas

SG6/G7243 reducer, larger end male for insertion into fitting x press-fit



dimension	pack 1 qty	pack 2 qty	code	price cat	£ each
18 x 15mm	5	100	39761	PRSCU	4.57
22 x 15mm	5	90	39750	PRSCU	5.13
22 x 18mm	5	80	39762	PRSCU	4.79
28 x 15mm	5	60	39751	PRSCU	13.17
28 x 18mm	5	75	39763	PRSCU	13.43
28 x 22mm	5	60	39752	PRSCU	13.66
35 x 22mm	1	30	39753	PRSCU	16.35
35 x 28mm	1	25	39754	PRSCU	18.12
42 x 22mm	1	20	39755	PRSCU	28.25
42 x 28mm	1	20	39756	PRSCU	26.90
42 x 35mm	1	10	39757	PRSCU	26.90
54 x 28mm	1	10	39760	PRSCU	36.39
54 x 35mm	1	15	39758	PRSCU	36.39
54 x 42mm	1	10	39759	PRSCU	36.39
66.7 x 28mm	1	0	39319	PRSCU	106.01
66.7 x 35mm	1	0	39320	PRSCU	106.01
66.7 x 42mm	1	0	39321	PRSCU	106.01
66.7 x 54mm	1	0	39322	PRSCU	128.28
76.1 x 35mm	1	0	39323	PRSCU	154.91
76.1 x 42mm	1	0	39324	PRSCU	154.91
76.1 x 54mm	1	0	39325	PRSCU	141.59
76.1 x 66.7mm	1	0	39327	PRSCU	171.85
108 x 42mm	1	0	39334	PRSCU	227.18
108 x 54mm	1	0	39335	PRSCU	190.85
108 x 66.7mm	1	0	39337	PRSCU	232.95
108 x 76.1mm	1	0	39338	PRSCU	205.26

SG11/G6330 union coupling, press-fit x press-fit



dimension	pack 1 qty	pack 2 qty	code	price cat	£ each
15mm	1	40	39770	PRSCU	64.32
22mm	1	20	39771	PRSCU	72.85
28mm	1	20	39772	PRSCU	81.03
35mm	1	10	39773	PRSCU	89.93
42mm	1	10	39774	PRSCU	124.25
54mm	1	5	39775	PRSCU	135.99

SG12/G7002A elbow, press-fit x press-fit



dimension	pack 1 qty	pack 2 qty	code	price cat	£ each
15mm	5	80	39780	PRSCU	4.74
18mm	5	70	39779	PRSCU	7.23
22mm	5	60	39781	PRSCU	7.94
28mm	5	40	39782	PRSCU	17.29
35mm	1	10	39783	PRSCU	34.41
42mm	1	10	39784	PRSCU	64.78
54mm	1	8	39785	PRSCU	89.79
66.7mm	1	0	39341	PRSCU	154.00
76.1mm	1	0	39342	PRSCU	241.85
108mm	1	0	39344	PRSCU	451.68

gas

SG12S/G7001A street elbow, press-fit x male end for insertion into fitting



dimension	pack 1 qty	pack 2 qty	code	price cat	£ each
15mm	5	80	39790	PRSCU	4.79
18mm	5	70	39789	PRSCU	7.93
22mm	5	50	39791	PRSCU	8.36
28mm	5	40	39792	PRSCU	20.36
35mm	1	10	39793	PRSCU	35.57
42mm	1	10	39794	PRSCU	69.64
54mm	1	8	39795	PRSCU	93.59
66.7mm	1	0	39346	PRSCU	177.08
76.1mm	1	0	39347	PRSCU	259.42
108mm	1	0	39349	PRSCU	455.87

SG21/G7041 obtuse elbow, press-fit x press-fit



dimension	pack 1 qty	pack 2 qty	code	price cat	£ each
15mm	5	100	39825	PRSCU	5.64
18mm	5	80	39823	PRSCU	7.41
22mm	5	60	39826	PRSCU	7.89
28mm	5	50	39827	PRSCU	23.63
35mm	1	15	39828	PRSCU	33.71
42mm	1	10	39829	PRSCU	56.22
54mm	1	5	39830	PRSCU	79.90
66.7mm	1	0	39351	PRSCU	186.01
76.1mm	1	0	39352	PRSCU	232.32
108mm	1	0	39354	PRSCU	359.36

SG15/G6471G backplate elbow, press-fit x BSP parallel female thread



dimension	pack 1 qty	pack 2 qty	code	price cat	£ each
15mm x 1/2"	1	20	39820	PRSCU	28.76
18mm x 1/2"	1	20	39819	PRSCU	55.07
22mm x 3/4"	1	20	39821	PRSCU	71.15

SG21S/G7040 obtuse street elbow, press-fit x male end for insertion into fitting



dimension	pack 1 qty	pack 2 qty	code	price cat	£ each
15mm	5	100	39835	PRSCU	4.74
18mm	5	80	39833	PRSCU	6.73
22mm	5	60	39836	PRSCU	7.14
28mm	5	50	39837	PRSCU	24.65
35mm	1	15	39838	PRSCU	35.44
42mm	1	10	39839	PRSCU	56.31
54mm	1	5	39840	PRSCU	83.77
66.7mm	1	0	39356	PRSCU	213.87
76.1mm	1	0	39357	PRSCU	241.85
108mm	1	0	39359	PRSCU	365.92

gas

SG23/G7085 full crossover, press-fit x press-fit



dimension	pack 1 qty	pack 2 qty	code	price cat	£ each
15mm	5	50	39844	PRSCU	19.85
22mm	10	20	39846	PRSCU	29.83

SG24/G7130 equal tee, press-fit on all ends



dimension	pack 1 qty	pack 2 qty	code	price cat	£ each
15mm	5	60	39850	PRSCU	7.60
18mm	5	75	39847	PRSCU	12.62
22mm	5	40	39851	PRSCU	13.72
28mm	5	25	39852	PRSCU	24.07
35mm	1	10	39853	PRSCU	41.68
42mm	1	10	39854	PRSCU	82.35
54mm	1	4	39855	PRSCU	102.77
66.7mm	1	0	39361	PRSCU	305.66
76.1mm	1	0	39362	PRSCU	435.12
108mm	1	0	39364	PRSCU	587.64

SG25/G7130 tee, reduced branch, press-fit on all ends



dimension	pack 1 qty	pack 2 qty	code	price cat	£ each
18 x 18 x 15mm	5	60	39856	PRSCU	10.30
22 x 22 x 15mm	5	40	39860	PRSCU	11.25
22 x 22 x 18mm	5	40	39868	PRSCU	11.25
28 x 28 x 15mm	5	25	39861	PRSCU	46.11
28 x 28 x 22mm	5	25	39862	PRSCU	28.47
35 x 35 x 22mm	1	15	39863	PRSCU	37.12
35 x 35 x 28mm	1	15	39864	PRSCU	41.26
42 x 42 x 22mm	1	15	39869	PRSCU	73.59
42 x 42 x 28mm	1	5	39865	PRSCU	74.62
42 x 42 x 35mm	1	8	39866	PRSCU	74.62
54 x 54 x 22mm	1	8	39871	PRSCU	125.14
54 x 54 x 42mm	1	5	39867	PRSCU	126.19
66.7 x 66.7 x 28mm	1	0	39368	PRSCU	307.07
66.7 x 66.7 x 35mm	1	0	39369	PRSCU	306.95
66.7 x 66.7 x 42mm	1	0	39370	PRSCU	306.95
66.7 x 66.7 x 54mm	1	0	39371	PRSCU	298.68
76.1 x 76.1 x 22mm	1	0	39372	PRSCU	362.31
76.1 x 76.1 x 28mm	1	0	39373	PRSCU	362.31
76.1 x 76.1 x 35mm	1	0	39374	PRSCU	366.87
76.1 x 76.1 x 42mm	1	0	39375	PRSCU	366.87
76.1 x 76.1 x 54mm	1	0	39376	PRSCU	368.18
108 x 108 x 54mm	1	0	39382	PRSCU	472.02
108 x 108 x 66.7mm	1	0	39383	PRSCU	608.52
108 x 108 x 76.1mm	1	0	39384	PRSCU	608.52



gas

SG26/G7130 tee, one end reduced, press-fit on all ends



dimension	pack 1 qty	pack 2 qty	code	price cat	£ each
22 x 15 x 22mm	5	50	39870	PRSCU	22.07

SG27/G7130 tee, one end and branch reduced, press-fit on all ends



dimension	pack 1 qty	pack 2 qty	code	price cat	£ each
22 x 15 x 15mm	5	40	39875	PRSCU	20.03

SG30/G6130G female branch tee, press-fit x BSP parallel female branch



dimension	pack 1 qty	pack 2 qty	code	price cat	£ each
15 x 15mm x 1/2"	5	20	39890	PRSCU	23.22
18 x 18mm x 1/2"	1	20	39891	PRSCU	32.68
22 x 22mm x 1/2"	5	20	39892	PRSCU	34.21
22 x 22mm x 3/4"	5	20	39893	PRSCU	35.00
28 x 28mm x 1/2"	5	15	39894	PRSCU	52.58
28 x 28mm x 3/4"	1	15	39895	PRSCU	56.65
35 x 35mm x 1/2"	1	10	39896	PRSCU	57.76
42 x 42mm x 1/2"	1	15	39898	PRSCU	83.18
54 x 54mm x 1/2"	1	5	39899	PRSCU	102.62
76.1 x 76.1mm x 1/2"	1	0	39386	PRSCU	382.88
108 x 108mm x 1/2"	1	0	39388	PRSCU	472.02

SG61/G7301 stop end, for use on copper tube



dimension	pack 1 qty	pack 2 qty	code	price cat	£ each
15mm	5	150	39880	PRSCU	9.30
18mm	5	130	39878	PRSCU	10.34
22mm	5	90	39881	PRSCU	10.81
28mm	5	75	39882	PRSCU	16.98
35mm	1	25	39883	PRSCU	29.31
42mm	1	20	39884	PRSCU	44.04
54mm	1	15	39885	PRSCU	53.12
66.7mm	1	0	39390	PRSCU	101.35
76.1mm	1	0	39391	PRSCU	111.04
108mm	1	0	39393	PRSCU	189.27

**gas**

**SG68FF/SG6360 flat faced union adaptor. Press-fit female x union nut**



dimension	pack 1 qty	pack 2 qty	code	price cat	£ each
15mm x 7/8"	5	80	39910	PRSCU	39.83
28mm x 1 3/8"	5	40	39912	PRSCU	59.64

**stainless gas**

**SSG1/7270 straight coupling press-fit x press-fit**



dimension	pack 1 qty	pack 2 qty	code	price cat	£ each
15mm	10	140	11800	PRSSF	12.44
22mm	10	80	11802	PRSSF	15.74
28mm	10	60	11803	PRSSF	17.69
35mm	10	40	11804	PRSSF	22.00
42mm	4	24	11805	PRSSF	30.05
54mm	4	16	11806	PRSSF	36.11
76.1mm	1	0	20481	PRSSF	187.42
88.9mm	1	0	20482	PRSSF	214.17
108mm	1	0	20483	PRSSF	272.23

**SSG1S/7270S straight coupling, slip pattern press-fit x press-fit**



dimension	pack 1 qty	pack 2 qty	code	price cat	£ each
15mm	10	140	11808	PRSSF	20.75
22mm	10	60	11810	PRSSF	24.66
28mm	10	40	11811	PRSSF	28.59
35mm	10	20	11812	PRSSF	31.85
42mm	4	16	11813	PRSSF	37.12
54mm	4	12	11814	PRSSF	47.38

**SSG1FMF composite flange. Press-fit x metric flange. Female press-fit socket with steel flange. Outer flange to BS 4504 type 133, PN16 rated**



dimension	pack 1 qty	pack 2 qty	code	price cat	£ each
76.1mm x DN65 (4 holes)	1	0	20475	PRSSF	532.09
88.9mm x DN80 (8 holes)	1	0	20476	PRSSF	632.25
108mm x DN100 (8 holes)	1	0	20477	PRSSF	750.54

**SSG2/6270G straight female connector press-fit x BSP parallel female thread**



dimension	pack 1 qty	pack 2 qty	code	price cat	£ each
15mm x 1/2"	10	130	11928	PRSSF	25.62
22mm x 1/2"	10	100	11930	PRSSF	28.81
22mm x 3/4"	10	80	11931	PRSSF	33.90
28mm x 1"	10	40	11933	PRSSF	52.69
35mm x 1 1/4"	5	30	11934	PRSSF	57.60
42mm x 1 1/2"	4	24	11936	PRSSF	88.69
54mm x 2"	2	12	11937	PRSSF	132.68

**stainless gas**

**SSG3/6243G straight male connector, press-fit x BSP taper male thread**



dimension	pack 1 qty	pack 2 qty	code	price cat	£ each
15mm x 1/2"	10	200	11914	PRSSF	23.82
22mm x 3/4"	10	100	11917	PRSSF	29.60
28mm x 1"	10	60	11919	PRSSF	37.45
35mm x 1 1/4"	5	20	11920	PRSSF	54.87
42mm x 1 1/2"	4	24	11923	PRSSF	80.02
54mm x 2"	4	12	11924	PRSSF	107.53
76.1mm x 2 1/2"	1	0	20485	PRSSF	631.08
88.9mm x 3"	1	0	20486	PRSSF	728.71

**SSG12/7002A elbow, press-fit x press-fit**



dimension	pack 1 qty	pack 2 qty	code	price cat	£ each
15mm	10	120	11816	PRSSF	17.84
22mm	10	40	11818	PRSSF	24.93
28mm	5	30	11819	PRSSF	31.58
35mm	5	10	11820	PRSSF	49.58
42mm	2	8	11821	PRSSF	82.79
54mm	2	4	11822	PRSSF	114.30
76.1mm	1	0	20501	PRSSF	290.02
88.9mm	1	0	20502	PRSSF	352.52
108mm	1	0	20503	PRSSF	482.01

**SSG6/7243 reducer, larger end male for insertion into fitting x press-fit**



dimension	pack 1 qty	pack 2 qty	code	price cat	£ each
22 x 15mm	10	140	11849	PRSSF	14.89
28 x 15mm	10	70	11851	PRSSF	16.82
28 x 22mm	10	80	11853	PRSSF	17.41
35 x 22mm	10	50	11854	PRSSF	21.26
35 x 28mm	10	60	11855	PRSSF	26.43
42 x 28mm	4	24	11856	PRSSF	31.86
42 x 35mm	4	24	11857	PRSSF	31.86
54 x 28mm	4	16	11858	PRSSF	56.28
54 x 35mm	4	16	11859	PRSSF	56.28
54 x 42mm	4	16	11860	PRSSF	56.28
76.1 x 42mm	1	0	20491	PRSSF	100.94
76.1 x 54mm	1	0	20492	PRSSF	160.72
88.9 x 54mm	1	0	20493	PRSSF	173.45
88.9 x 76.1mm	1	0	20494	PRSSF	231.59
108 x 54mm	1	0	20495	PRSSF	246.11
108 x 76.1mm	1	0	20496	PRSSF	255.78
108 x 88.9mm	1	0	20497	PRSSF	272.23

**SSG12S/7001A street elbow, press-fit x male end for insertion into fitting**



dimension	pack 1 qty	pack 2 qty	code	price cat	£ each
15mm	10	100	11824	PRSSF	17.47
22mm	10	60	11826	PRSSF	24.26
28mm	5	30	11827	PRSSF	30.29
35mm	5	10	11828	PRSSF	48.69
42mm	2	8	11829	PRSSF	78.91
54mm	2	4	11830	PRSSF	113.48
76.1mm	1	0	20505	PRSSF	290.02
88.9mm	1	0	20506	PRSSF	352.52
108mm	1	0	20507	PRSSF	482.01

stainless gas

SSG13/6092G male elbow, press-fit x BSP taper male thread



dimension	pack 1 qty	pack 2 qty	code	price cat	£ each
22mm x 3/4"	10	60	11942	PRSSF	45.26

SSG14/6090G female elbow, press-fit x parallel female thread



dimension	pack 1 qty	pack 2 qty	code	price cat	£ each
15mm x 1/2"	10	100	11950	PRSSF	37.44
22mm x 3/4"	10	40	11952	PRSSF	50.32
28mm x 1"	5	20	11953	PRSSF	65.36

SSG15/6472G backplate elbow, press-fit x BSP parallel female thread



dimension	pack 1 qty	pack 2 qty	code	price cat	£ each
15mm x 1/2"	10	80	11957	PRSSF	34.81

SSG21/7041 obtuse elbow, press-fit x press-fit



dimension	pack 1 qty	pack 2 qty	code	price cat	£ each
15mm	10	150	11832	PRSSF	24.26
22mm	10	60	11834	PRSSF	30.13
28mm	5	30	11835	PRSSF	35.10
35mm	5	15	11836	PRSSF	41.17
42mm	2	10	11837	PRSSF	66.26
54mm	2	8	11838	PRSSF	86.09
76.1mm	1	0	20511	PRSSF	276.78
88.9mm	1	0	20512	PRSSF	330.22
108mm	1	0	20513	PRSSF	450.81

SSG21S/7040 obtuse street elbow, press-fit x male end for insertion into fitting



dimension	pack 1 qty	pack 2 qty	code	price cat	£ each
15mm	10	150	11840	PRSSF	23.82
22mm	10	60	11842	PRSSF	29.14
28mm	5	40	11843	PRSSF	34.16
35mm	5	20	11844	PRSSF	39.22
42mm	4	8	11845	PRSSF	62.70
54mm	2	8	11846	PRSSF	81.54
76.1mm	1	0	20516	PRSSF	254.32
88.9mm	1	0	20517	PRSSF	303.51
108mm	1	0	20518	PRSSF	415.13

stainless gas

SSG24/7130 equal tee, press-fit on all ends



dimension	pack 1 qty	pack 2 qty	code	price cat	£ each
15mm	10	80	11865	PRSSF	29.26
22mm	10	40	11867	PRSSF	35.91
28mm	10	30	11868	PRSSF	42.05
35mm	5	15	11869	PRSSF	53.20
42mm	4	8	11870	PRSSF	75.51
54mm	2	6	11871	PRSSF	90.33
76.1mm	1	0	20521	PRSSF	522.18
88.9mm	1	0	20522	PRSSF	571.24
108mm	1	0	20523	PRSSF	705.14

SSG25/7130 tee, reduced branch press-fit on all ends



dimension	pack 1 qty	pack 2 qty	code	price cat	£ each
22 x 22 x 15mm	10	50	11873	PRSSF	30.70
28 x 28 x 15mm	10	30	11875	PRSSF	37.24
28 x 28 x 22mm	5	30	11877	PRSSF	40.29
35 x 35 x 15mm	5	20	11878	PRSSF	46.03
35 x 35 x 22mm	5	20	11880	PRSSF	47.86
35 x 35 x 28mm	10	20	11881	PRSSF	49.92
42 x 42 x 22mm	4	12	11882	PRSSF	68.57
42 x 42 x 28mm	4	12	11883	PRSSF	70.90
42 x 42 x 35mm	4	12	11884	PRSSF	73.06
54 x 54 x 22mm	2	8	11885	PRSSF	77.60
54 x 54 x 28mm	2	8	11886	PRSSF	79.88
54 x 54 x 35mm	2	8	11887	PRSSF	82.57
54 x 54 x 42mm	2	8	11888	PRSSF	84.87
76.1 x 76.1 x 22mm	1	0	20528	PRSSF	392.85
76.1 x 76.1 x 28mm	1	0	20529	PRSSF	423.98
76.1 x 76.1 x 35mm	1	0	20530	PRSSF	455.20
76.1 x 76.1 x 42mm	1	0	20531	PRSSF	490.96
76.1 x 76.1 x 54mm	1	0	20532	PRSSF	522.18
88.9 x 88.9 x 22mm	1	0	20533	PRSSF	415.13
88.9 x 88.9 x 28mm	1	0	20534	PRSSF	445.32
88.9 x 88.9 x 35mm	1	0	20535	PRSSF	477.45
88.9 x 88.9 x 42mm	1	0	20536	PRSSF	513.26
88.9 x 88.9 x 54mm	1	0	20537	PRSSF	535.50
108 x 108 x 22mm	1	0	20538	PRSSF	441.87
108 x 108 x 28mm	1	0	20539	PRSSF	468.55
108 x 108 x 35mm	1	0	20540	PRSSF	513.26
108 x 108 x 42mm	1	0	20541	PRSSF	535.50
108 x 108 x 54mm	1	0	20542	PRSSF	580.27

## stainless gas

SSG30/6130G female branch tee,  
press-fit x BSP parallel female branch

dimension	pack 1 qty	pack 2 qty	code	price cat	£ each
15 x 15mm x 1/2"	10	80	11900	PRSSF	31.97
22 x 22mm x 1/2"	10	40	11903	PRSSF	35.12
22 x 22mm x 3/4"	10	40	11904	PRSSF	39.29
28 x 28mm x 1/2"	5	30	11905	PRSSF	38.65
35 x 35mm x 1/2"	5	20	11907	PRSSF	46.56
35 x 35mm x 3/4"	10	20	11908	PRSSF	57.73
42 x 42mm x 1/2"	4	12	11909	PRSSF	56.81
54 x 54mm x 1/2"	2	8	11910	PRSSF	67.55
54 x 54mm x 3/4"	2	8	11911	PRSSF	74.09
54 x 54mm x 2"	2	6	11912	PRSSF	146.75
76.1 x 76.1mm x 3/4"	1	0	20551	PRSSF	427.31
76.1 x 76.1mm x 2"	1	0	20552	PRSSF	472.40
88.9 x 88.9mm x 3/4"	1	0	20553	PRSSF	464.31
88.9 x 88.9mm x 2"	1	0	20554	PRSSF	513.63
108 x 108mm x 3/4"	1	0	20555	PRSSF	558.66
108 x 108mm x 2"	1	0	20556	PRSSF	595.79

## SSG61/7301 stop end, press-fit



dimension	pack 1 qty	pack 2 qty	code	price cat	£ each
15mm	20	340	11980	PRSSF	11.85
22mm	10	140	11982	PRSSF	13.80
28mm	10	80	11983	PRSSF	19.50
35mm	10	40	11984	PRSSF	22.59
42mm	4	32	11985	PRSSF	31.70
54mm	4	24	11986	PRSSF	36.74

**tools and accessories**

**S215 ACO103 15 - 35mm press tool with Bluetooth**



dimension	pack 1 qty	pack 2 qty	code	price cat	£ each
15 - 35mm	1	0	39015	TOOLS	2104.98

**S225 ECO203 15 - 54mm press tool**



dimension	pack 1 qty	pack 2 qty	code	price cat	£ each
15mm - 54mm	1	0	39010	TOOLS	3124.81

**S400 ACO401 76.1 - 168.3mm press tool**



dimension	pack 1 qty	pack 2 qty	code	price cat	£ each
76.1 - 168.3mm	1	0	39014	TOOLS	6056.33

**S335 ACO203XLBT press tool. Including 2 batteries, charger and case (12 - 108mm)**



dimension	pack 1 qty	pack 2 qty	code	price cat	£ each
12 - 108mm	1	0	39013	TOOLS	3565.43

**S226 ACO203BT 15 - 54mm press tool (including battery + charger)**



dimension	pack 1 qty	pack 2 qty	code	price cat	£ each
15 - 54mm	1	0	39011	TOOLS	3299.88



tools and accessories

S350 ACO203BT tools & jaw kit (15 - 35mm)



dimension	pack 1 qty	pack 2 qty	code	price cat	£ each
15 - 35mm	1	0	39012	TOOLS	4096.20

S342 ACO202 battery



dimension	pack 1 qty	pack 2 qty	code	price cat	£ each
18V 1.5Ah	1	0	39018	PR SUN	526.22
18V 3Ah	1	0	39019	PR SUN	844.63

S340 ACO102 battery



dimension	pack 1 qty	pack 2 qty	code	price cat	£ each
Lilon 12V 1.5Ah	1	0	39016	PR SUN	362.26
Lilon 12V 3Ah	1	0	39017	PR SUN	520.50

S211 PB1 jaws



dimension	pack 1 qty	pack 2 qty	code	price cat	£ each
12mm	1	0	39191	TOOLS	170.23
15mm	1	0	39188	TOOLS	206.00
18mm	1	0	39189	TOOLS	206.00
22mm	1	0	39202	TOOLS	206.00
28mm	1	0	39203	TOOLS	206.00
35mm	1	0	39209	TOOLS	296.80
15 - 35mm	1	0	39065	TOOLS	950.13

S341 ACO102 charger



dimension	pack 1 qty	pack 2 qty	code	price cat	£ each
12V (220-240V)	1	0	39290	PR SUN	396.58

tools and accessories

S227 ECOTEC jaws



dimension	pack 1 qty	pack 2 qty	code	price cat	£ each
12mm	1	0	39179	TOOLS	230.78
15mm	1	0	39180	TOOLS	272.05
18mm	1	0	39181	TOOLS	272.05
22mm	1	0	39182	TOOLS	272.05
28mm	1	0	39183	TOOLS	272.05
35mm	1	0	39184	TOOLS	272.05
15 - 35mm	1	0	39068	TOOLS	1020.30

S228 snap on sling 42-54mm



dimension	pack 1 qty	pack 2 qty	code	price cat	£ each
42mm	1	0	39186	TOOLS	1068.07
54mm	1	0	39187	TOOLS	1068.07

S330 snap on sling 66.7 - 88.9mm



dimension	pack 1 qty	pack 2 qty	code	price cat	£ each
66.7mm	1	0	39220	TOOLS	1552.35
76.1mm	1	0	39221	TOOLS	1384.63
88.9mm	1	0	39224	TOOLS	1604.44

S330 snap on sling 108mm



dimension	pack 1 qty	pack 2 qty	code	price cat	£ each
108mm	1	0	39225	TOOLS	2049.87

S323 sling 139.7mm



dimension	pack 1 qty	pack 2 qty	code	price cat	£ each
139.7mm	1	0	39038	PRISUN	8462.28

tools and accessories

S324 sling 168.3mm



dimension	pack 1 qty	pack 2 qty	code	price cat	£ each
168.3mm	1	0	39039	PR SUN	9373.74

S410 HP snap on sling.  
Not suitable for copper



dimension	pack 1 qty	pack 2 qty	code	price cat	£ each
42mm	1	0	39269	TOOLS	1693.35
54mm	1	0	39271	TOOLS	1763.14

sling (copper only)



dimension	pack 1 qty	pack 2 qty	code	price cat	£ each
108mm	1	0	39222	TOOLS	2310.17

S411 HP401 snap on sling 76.1-108mm



dimension	pack 1 qty	pack 2 qty	code	price cat	£ each
76.1mm	1	0	39273	TOOLS	1990.08
88.9mm	1	0	39277	TOOLS	2042.46
108mm	1	0	39279	TOOLS	2531.20

S410 HP snap on sling 35-54mm



dimension	pack 1 qty	pack 2 qty	code	price cat	£ each
35mm	1	0	39268	TOOLS	1588.55

S351 AC0203 jaw and sling set  
(42-54mm)



dimension	pack 1 qty	pack 2 qty	code	price cat	£ each
42 - 54mm	1	0	39041	TOOLS	2673.36

**tools and accessories**

**S353 ACO203XL adaptor + sling set**



dimension	pack 1 qty	pack 2 qty	code	price cat	£ each
67mm - 89mm	1	0	39045	PRSUN	9158.72
108mm	1	0	39046	PRSUN	4324.68

**S229 ZB203 adaptor 35-54mm**



dimension	pack 1 qty	pack 2 qty	code	price cat	£ each
35 - 54mm	1	0	39190	TOOLS	419.45

**Novopress case for slings**



dimension	pack 1 qty	pack 2 qty	code	price cat	£ each
35mm - 54mm	1	0	39297	PRSUN	555.01
67 - 108mm	1	0	39048	PRSUN	241.43

**VSH PowerPress jaw PB2 DW**



dimension	pack 1 qty	pack 2 qty	code	price cat	£ each
1/2"	1	0	6360002	PRSUN	384.30
3/4"	1	0	6360013	PRSUN	626.75
1"	1	0	6360024	PRSUN	626.75

**push & press domestic tool kit**



dimension	pack 1 qty	pack 2 qty	code	price cat	£ each
15 - 28mm	1	0	84727	PRSUN	3026.59

**VSH PowerPress sling DW**



dimension	pack 1 qty	pack 2 qty	code	price cat	£ each
1 1/4"	1	0	6360035	PRSUN	1288.07

tools and accessories

VSH PowerPress sling DW



dimension	pack 1 qty	pack 2 qty	code	price cat	£ each
1 1/2"	1	0	6360046	PRSUN	1373.47

VSH PowerPress set jaws DW plus case



dimension	pack 1 qty	pack 2 qty	code	price cat	£ each
1/2" - 1"	1	0	6360167	PRSUN	1750.65

VSH PowerPress sling DW



dimension	pack 1 qty	pack 2 qty	code	price cat	£ each
2"			6360057	PRSUN	1430.40

VSH PowerPress jaws, adapyer and slings DW plus case



dimension	pack 1 qty	pack 2 qty	code	price cat	£ each
1/2" - 2"	1	0	6360178	PRSUN	6579.97

VSH PowerPress slings and adapter DW plus case



dimension	pack 1 qty	pack 2 qty	code	price cat	£ each
1 1/4" - 2"	1	0	6360090	PRSUN	4632.81

S231 ZB221 adaptor 66.7-108mm



dimension	pack 1 qty	pack 2 qty	code	price cat	£ each
66.7 - 108mm	1	0	39286	TOOLS	1043.54

tools and accessories

S232 ZB222 adaptor (2nd press) 108mm



dimension	pack 1 qty	pack 2 qty	code	price cat	£ each
108mm	1	0	39287	TOOLS	1024.03

VSH PowerPress 110 depth gauge



dimension	pack 1 qty	pack 2 qty	code	price cat	£ each
N/A	1	20	PWR39173	PRSUN	28.47

S130 silicone lubricant, for lubricating tube and o-rings



dimension	pack 1 qty	pack 2 qty	code	price cat	£ each
100g tub	1	0	39219	PRSUN	12.89

S110 depth gauge, 12mm to 108mm



dimension	pack 1 qty	pack 2 qty	code	price cat	£ each
N/A	1	20	39173	PRSUN	24.70

Rocol oxylube spray



dimension	pack 1 qty	pack 2 qty	code	price cat	£ each
400ml	1	12	39153	PRSUN	78.56

SS111 depth gauge, 12mm to 108mm



dimension	pack 1 qty	pack 2 qty	code	price cat	£ each
12 - 108mm	1	10	39174	PRSUN	28.12

**tools and accessories**

**S115 tube stripper, for use with SC660 plastic coated carbon steel system tube**



dimension	pack 1 qty	pack 2 qty	code	price cat	£ each
15mm	1	0	39260	PRSUN	125.40
18mm	1	0	39261	PRSUN	125.40
22mm	1	0	39262	PRSUN	147.24
28mm	1	0	39263	PRSUN	147.24
35mm - 54mm	1	0	39264	PRSUN	179.25

**TC155 carbon cutter wheel, for use with Rems Cento**



dimension	pack 1 qty	pack 2 qty	code	price cat	£ each
N/A	1	0	76250	TECCA	332.83

**SS155 stainless steel cutter wheel, for use with Rems Cento + Rems DueCento**

**S120 deburring tool, for copper only. 15mm to 54mm**



dimension	pack 1 qty	pack 2 qty	code	price cat	£ each
N/A	1	0	39168	PRSUN	351.09

dimension	pack 1 qty	pack 2 qty	code	price cat	£ each
8 - 168.3mm	1	0	76251	PRSUN	188.02

**tools and accessories**

S100 replacement o-rings. for VSH XPress copper fittings only. Sizes 15mm to 54mm in bags of 20. Sizes 67mm to 108mm in bags of 5



dimension	pack 1 qty	pack 2 qty	code	price cat	£ each
12mm	20	0	39116	PRSUN	0.54
15mm	20	0	39115	PRSUN	0.58
18mm	20	200	39117	PRSUN	0.69
22mm	20	0	39122	PRSUN	0.72
28mm	20	0	39128	PRSUN	0.80
35mm	20	0	39135	PRSUN	0.82
42mm	20	0	39142	PRSUN	1.13
54mm	20	0	39154	PRSUN	1.24
66.7mm	5	0	39230	PRSUN	3.70
76.1mm	5	0	39231	PRSUN	5.27
88.9mm	5	0	39150	PRSUN	6.22
108mm	5	0	39232	PRSUN	7.84

S104 flat face union washer



dimension	pack 1 qty	pack 2 qty	code	price cat	£ each
1/2"	10	0	38989	PRSUN	0.36
3/4"	10	0	38990	PRSUN	0.36
1"	10	0	38991	PRSUN	0.47
1 1/4"	10	0	38992	PRSUN	0.50
1 1/2"	10	0	38993	PRSUN	0.82
2"	10	0	38994	PRSUN	1.03
2 1/2"	10	0	38995	PRSUN	2.53

SS100 replacement EPDM o-rings, for VSH XPress stainless and carbon fittings



dimension	pack 1 qty	pack 2 qty	code	price cat	£ each
15mm	20	600	27000	PRSUN	0.53
18mm	20	500	27001	PRSUN	0.58
22mm	20	500	27002	PRSUN	0.66
28mm	20	400	27003	PRSUN	0.75
35mm	20	120	27004	PRSUN	0.77
42mm	20	300	27005	PRSUN	1.03
54mm	20	300	27006	PRSUN	1.13
76.1mm	5	100	27007	PRSUN	4.85
88.9mm	5	100	27008	PRSUN	6.11
108mm	5	50	27009	PRSUN	7.21
139.7mm	1	300	11496	PRSUN	17.23
168.3mm	1	300	11497	PRSUN	18.89

SS106 flat face union rubber washer Mk2, for use with VSH XPress stainless and VSH XPress carbon union fittings



dimension	pack 1 qty	pack 2 qty	code	price cat	£ each
15 - 18mm	20	0	27030	PRSUN	0.35
22mm	20	0	27031	PRSUN	0.72
28mm	20	0	27032	PRSUN	1.06
35mm	20	0	27033	PRSUN	1.47
42mm	20	0	27034	PRSUN	1.82
54mm	20	0	27035	PRSUN	3.36



## tools and accessories

SV100 Viton o-rings for use on solar installations with VSH XPress solar and VSH XPress copper fittings only



dimension	pack 1 qty	pack 2 qty	code	price cat	£ each
12mm	20	0	39098	PRSUN	0.54
15mm	20	1000	39100	PRSUN	0.58
18mm	20	1000	39099	PRSUN	0.82
22mm	20	1000	39101	PRSUN	0.87
28mm	20	0	39102	PRSUN	1.06
35mm	20	0	39103	PRSUN	1.54
42mm	20	160	39104	PRSUN	2.54
54mm	20	0	39105	PRSUN	2.67

SSF100 FKM o-ring for use on VSH XPress stainless and VSH XPress carbon fittings



dimension	pack 1 qty	pack 2 qty	code	price cat	£ each
15mm	20	400	27100	PRSUN	0.75
18mm	20	400	27101	PRSUN	0.92
22mm	20	400	27102	PRSUN	1.12
28mm	20	400	27103	PRSUN	1.41
35mm	20	120	27104	PRSUN	2.00
42mm	20	300	27105	PRSUN	3.04
54mm	20	300	27106	PRSUN	3.20

SV105 Viton o-rings, for use on solar installations with VSH XPress stainless and VSH XPress carbon fittings



dimension	pack 1 qty	pack 2 qty	code	price cat	£ each
15mm	20	600	39080	PRSUN	2.32
18mm	20	500	39081	PRSUN	3.40
22mm	20	500	39082	PRSUN	3.53
28mm	20	400	39083	PRSUN	4.17
35mm	20	400	39084	PRSUN	4.61
42mm	20	300	39085	PRSUN	5.96
54mm	20	300	39086	PRSUN	6.40
66.7mm	5	0	39087	PRSUN	35.27
76.1mm	5	100	39088	PRSUN	44.63
88.9mm	5	100	39089	PRSUN	55.84
108mm	5	50	39090	PRSUN	73.19
139.7mm	1	300	11498	PRSUN	73.11
168.3mm	1	200	11499	PRSUN	81.69

valves

PS1600 pressure independent control valve (PICV) (x2 press)



dimension	pack 1 qty	pack 2 qty	code	price cat	£ each
½" DN15 (LF)	1	0	16020	DYNAM	247.71
½" DN15 (SF)	1	0	16021	DYNAM	247.71
½" DN15 (HF)	1	0	16022	DYNAM	247.71
¾" DN20 (SF)	1	0	16023	DYNAM	296.78
¾" DN20 (HF)	1	0	16024	DYNAM	296.78
1" DN25 (SF)	1	0	16025	DYNAM	375.11

valves

PSU1600 pressure independent control valve (PICV) (press x press union)



dimension	pack 1 qty	pack 2 qty	code	price cat	£ each
½" DN15 (LF)	1	0	16050	DYNAM	263.44
½" DN15 (SF)	1	0	16051	DYNAM	263.44
½" DN15 (HF)	1	0	16052	DYNAM	263.44
¾" DN20 (SF)	1	0	16053	DYNAM	314.76
¾" DN20 (HF)	1	0	16054	DYNAM	312.14
1" DN25 (SF)	1	0	16055	DYNAM	387.86

## valves

PS902S Pegler Proflow Venturi DZR  
Dynamic valve - excluding actuator. VSH  
XPress ends for copper/carbon steel/  
stainless steel tube. Direct flow  
measuring



dimension	pack 1 qty	pack 2 qty	code	price cat	£ each
DN15 / 15mm (SL)	1	5	15282	DYNAM	192.31
DN15 / 15mm (SS)	1	5	15283	DYNAM	192.31
DN15 / 15mm (SH)	1	5	15284	DYNAM	192.31
DN20 / 22mm (SS)	1	5	15990	DYNAM	243.61
DN20 / 22mm (SH)	1	5	15991	DYNAM	243.61
DN25 / 28mm (SS)	1	5	15992	DYNAM	288.49
DN25 / 28mm (SH)	1	5	15993	DYNAM	288.49
DN32 / 35mm (SH)	1	2	15994	DYNAM	484.66
DN40 / 42mm (SH)	1	1	15995	DYNAM	1015.86
DN50 / 54mm (SH)	1	0	15996	DYNAM	1087.16

PS900S Pegler Proflow Venturi DZR  
static commissioning valve (FODRV).  
VSH XPress ends for copper/carbon  
steel/stainless steel tube



dimension	pack 1 qty	pack 2 qty	code	price cat	£ each
DN15 / 15mm (UL)	1	5	16381	VTURI	160.43
DN15 / 15mm (SL)	1	5	15550	VTURI	141.41
DN15 / 15mm (SS)	1	5	15551	VTURI	141.41
DN15 / 15mm (SH)	1	5	15552	VTURI	141.41
DN15 / 18mm (UL)	1	5	16382	VTURI	161.81
DN15 / 18mm (SH)	1	5	15555	VTURI	142.85
DN20 / 15mm (SL)	1	5	15556	VTURI	186.44
DN20 / 15mm (SS)	1	5	15557	VTURI	186.44
DN20 / 15mm (SH)	1	5	15558	VTURI	186.44
DN20 / 18mm (SL)	1	5	15559	VTURI	186.44
DN20 / 18mm (SS)	1	5	15560	VTURI	186.44
DN20 / 18mm (SH)	1	5	15561	VTURI	186.44
DN20 / 22mm (SL)	1	5	15562	VTURI	197.05
DN20 / 22mm (SS)	1	5	15563	VTURI	197.05
DN20 / 22mm (SH)	1	5	15564	VTURI	197.05
DN25 / 28mm (SS)	1	5	15565	VTURI	221.04
DN25 / 28mm (SH)	1	5	15566	VTURI	221.04
DN32 / 35mm (SH)	1	2	15567	VTURI	354.71
DN40 / 42mm (SH)	1	2	15568	VTURI	443.82
DN50 / 54mm (SH)	1	0	15569	VTURI	615.72

valves

PSU900S (outlet) Pegler Proflow Venturi DZR static commissioning valve (FODRV), VSH XPress union outlet x VSH XPress end for copper, carbon/stainless steel



dimension	pack 1 qty	pack 2 qty	code	price cat	£ each
DN15 / 15mm (UL)	1	5	16387	VTURI	229.63
DN15 / 15mm (SL)	1	5	15950	VTURI	146.08
DN15 / 15mm (SS)	1	5	15951	VTURI	146.08
DN15 / 15mm (SH)	1	5	15952	VTURI	146.08
DN15 / 18mm (SL)	1	5	16388	VTURI	166.04
DN15 / 18mm (SL)	1	5	15953	VTURI	147.06
DN15 / 18mm (SS)	1	5	15954	VTURI	147.06
DN15 / 18mm (SH)	1	5	15955	VTURI	147.06
DN20 / 22mm (SL)	1	5	15956	VTURI	198.96
DN20 / 22mm (SS)	1	5	15957	VTURI	198.96
DN20 / 22mm (SH)	1	5	15958	VTURI	198.96
DN25 / 28mm (SS)	1	0	15959	VTURI	240.90
DN25 / 28mm (SH)	1	5	15960	VTURI	240.90
DN32 / 35mm (SH)	1	2	15961	VTURI	311.05
DN40 / 42mm (SH)	1	2	15962	VTURI	397.31
DN50 / 54mm (SH)	1	0	15963	VTURI	585.95

PSU900S (inlet) Pegler Proflow Venturi commissioning valve (FODRV), VSH XPress union inlet x VSH XPress end for copper, carbon/stainless steel



dimension	pack 1 qty	pack 2 qty	code	price cat	£ each
DN15 / 15mm (UL)	1	5	16361	VTURI	164.42
DN15 / 15mm (SL)	1	5	16362	VTURI	144.35
DN15 / 15mm (SS)	1	5	16363	VTURI	144.35
DN15 / 15mm (SH)	1	5	16364	VTURI	144.35
DN15 / 18mm (SL)	1	5	16366	VTURI	145.19

PS901S Pegler Proflow Venturi DZR double regulating valve (DRV). VSH XPress ends for copper/carbon steel/stainless steel tube



dimension	pack 1 qty	pack 2 qty	code	price cat	£ each
DN50 / 54mm (SS)	1	0	15583	VTURI	585.27

by Pegler

valves

Thermic actuators



dimension	pack 1 qty	pack 2 qty	code	price cat	£ each
DN15-32	1	5	15280	DYNAM	85.31

Thermic actuator modulating



dimension	pack 1 qty	pack 2 qty	code	price cat	£ each
DN15-32	1	5	15281	DYNAM	160.41

910TP red and blue Venturi test points. Male taper thread



dimension	pack 1 qty	pack 2 qty	code	price cat	£ each
1/4"	1	0	15201	VTURI	36.53

insulation jackets for Pegler Proflow Venturi valve



dimension	pack 1 qty	pack 2 qty	code	price cat	£ each
DN15	1	0	15250	VTURI	44.46
DN20	1	0	15251	VTURI	47.04
DN25	1	0	15252	VTURI	55.60
DN32	1	0	15253	VTURI	65.65
DN40	1	0	15254	VTURI	74.21
DN50	1	0	15255	VTURI	77.86

valves

Pegler 710TP DZR red and blue self seal test points. Male taper connection



XT1200 double regulating valve (DRV). DZR brass body, VSH XPress end x VSH Tectite push end for copper/carbon steel/stainless steel tube



dimension	pack 1 qty	pack 2 qty	code	price cat	£ each
1/4" x 36mm	1	6	126041	PGCOM	91.55
1/4" x 75mm	1	5	126042	PGCOM	201.55

dimension	pack 1 qty	pack 2 qty	code	price cat	£ each
15mm (SF)	1	0	126209	PGCOM	See Pegler Proflow Price List
35mm (SF)	1	0	126213	PGCOM	See Pegler Proflow Price List
54mm (SF)	1	0	126215	PGCOM	See Pegler Proflow Price List

PS1200SF double regulating valve (DRV). DZR brass body, VSH XPress ends for copper/carbon steel/stainless steel tube



dimension	pack 1 qty	pack 2 qty	code	price cat	£ each
DN15 / 15mm	1	0	126009	PGCOM	94.91
DN20 / 22mm	1	0	126010	PGCOM	141.70
DN25 / 28mm	1	0	126011	PGCOM	169.96
DN32 / 35mm	1	0	126012	PGCOM	245.79
DN40 / 42mm	1	0	126013	PGCOM	286.51
DN50 / 54mm	1	0	126014	PGCOM	417.01

by Pegler

valves

PS1260 commissioning valve (FODRV). DZR brass body with test points, VSH XPress ends for copper/carbon steel/stainless steel tube



PSU1260 (outlet) commissioning valve (FODRV). DZR brass body with test points. VSH XPress union outlet x VSH XPress end for copper, carbon/stainless steel



dimension	pack 1 qty	pack 2 qty	code	price cat	£ each
DN15 / 15mm (LF)	1	0	126029	PGCOM	141.58
DN15 / 15mm (ULF)	1	0	126087	PGCOM	141.58
DN15 / 15mm (MF)	1	0	126088	PGCOM	141.58
DN15 / 15mm (SF)	1	0	126030	PGCOM	141.58
DN15 / 18mm (LF)	1	0	126134	PGCOM	142.99
DN15 / 18mm (SF)	1	0	126135	PGCOM	142.99
DN20 / 22mm (SF)	1	0	126031	PGCOM	196.52
DN25 / 28mm (SF)	1	0	126032	PGCOM	269.32
DN32 / 35mm (SF)	1	0	126033	PGCOM	283.05
DN40 / 42mm (SF)	1	0	126034	PGCOM	364.52
DN50 / 54mm (SF)	1	0	126035	PGCOM	471.63

dimension	pack 1 qty	pack 2 qty	code	price cat	£ each
15mm (ULF)	1	0	126292	PGCOM	144.49
15mm (ULF)	1	0	126230	PGCOM	144.49
15mm (MF)	1	0	126290	PGCOM	144.49
15mm (SF)	1	0	126231	PGCOM	144.49
18mm (ULF)	1	0	126296	PGCOM	145.36
18mm (MF)	1	0	126294	PGCOM	145.36
18mm (LF)	1	0	126232	PGCOM	145.36
18mm (SF)	1	0	126233	PGCOM	145.36
22mm (SF)	1	0	126234	PGCOM	204.46
28mm (SF)	1	0	126235	PGCOM	244.30
35mm (SF)	1	0	126236	PGCOM	301.02
42mm (SF)	1	0	126237	PGCOM	383.15
54mm (SF)	1	0	126238	PGCOM	483.91

**valves**

PSU1260 (inlet) commissioning valve (FODRV). DZR brass body with test points. VSH XPress union inlet x VSH XPress end for copper, carbon/stainless steel



XT1260 commissioning valve (FODRV). DZR brass body with test points, VSH XPress press end x VSH Tectite push end for copper/carbon steel/stainless steel tube



dimension	pack 1 qty	pack 2 qty	code	price cat	£ each
15mm (ULF)	1	0	126293	PGCOM	144.49
15mm (LF)	1	0	126247	PGCOM	144.49
15mm (MF)	1	0	126291	PGCOM	144.49
15mm (SF)	1	0	126248	PGCOM	144.49
18mm (LF)	1	0	126297	PGCOM	145.36
18mm (MF)	1	0	126295	PGCOM	145.36
18mm (LF)	1	0	126249	PGCOM	145.36
18mm (SF)	1	0	126250	PGCOM	145.36
22mm (SF)	1	0	126251	PGCOM	204.46
28mm (SF)	1	0	126252	PGCOM	244.30
35mm (SF)	1	0	126253	PGCOM	301.02
42mm (SF)	1	0	126254	PGCOM	383.34
54mm (SF)	1	0	126255	PGCOM	485.03

dimension	pack 1 qty	pack 2 qty	code	price cat	£ each
15mm (LF)	1	0	126200	PGCOM	See Pegler Proflow Price List
22mm (SF)	1	0	126204	PGCOM	See Pegler Proflow Price List
28mm (SF)	1	0	126205	PGCOM	See Pegler Proflow Price List
35mm (SF)	1	0	126206	PGCOM	See Pegler Proflow Price List
54mm (SF)	1	0	126208	PGCOM	See Pegler Proflow Price List



by Pegler

valves

PS1250 DZR metering station. DZR brass body with test points, VSH XPress ends for copper/carbon steel/stainless steel tube



dimension	pack 1 qty	pack 2 qty	code	price cat	£ each
DN15 / 15mm	1	0	126070	PGCOM	65.31
DN15 / 15mm	1	0	126071	PGCOM	65.31
DN20 / 22mm	1	0	126072	PGCOM	91.71
DN25 / 28mm	1	0	126073	PGCOM	94.67
DN32 / 35mm	1	0	126074	PGCOM	118.70
DN40 / 42mm	1	0	126075	PGCOM	147.28
DN50 / 54mm	1	0	126076	PGCOM	194.48

XT1250 DZR metering station. DZR brass body with test points, VSH XPress press end x VSH Tectite push end for copper/carbon steel/stainless steel tube



dimension	pack 1 qty	pack 2 qty	code	price cat	£ each
28mm (SF)	1	0	126221	PGCOM	See Pegler Proflow Price List

PS1070/125 bronze full way gate valve. VSH XPress ends for copper/carbon steel/stainless steel tube



dimension	pack 1 qty	pack 2 qty	code	price cat	£ each
15mm	1	10	103301	GENVL	44.28
22mm	1	10	103303	GENVL	59.02
28mm	1	5	103304	GENVL	88.90
35mm	1	2	103305	GENVL	126.82
42mm	1	2	103306	GENVL	171.34
54mm	1	2	103307	GENVL	272.11

PS1070/125LS bronze full way gate valve with lockshield. VSH XPress ends for copper/carbon steel/stainless steel tube



dimension	pack 1 qty	pack 2 qty	code	price cat	£ each
15mm	1	10	103311	GENVL	45.91
22mm	1	10	103313	GENVL	59.86
28mm	1	5	103314	GENVL	88.90
35mm	1	5	103315	GENVL	125.55
42mm	1	2	103316	GENVL	171.58
54mm	1	2	103317	GENVL	268.48

valves

PSU1070/125LS bronze full way gate valve, lockshield. VSH XPress union x VSH XPress end for copper, carbon/ stainless steel



dimension	pack 1 qty	pack 2 qty	code	price cat	£ each
15mm	1	10	103330	GENVL	54.60
22mm	1	5	103332	GENVL	71.03
28mm	1	4	103333	GENVL	120.73

PS1078LS DZR full way gate valve with lockshield. VSH XPress ends for copper/ carbon steel/stainless steel tube



dimension	pack 1 qty	pack 2 qty	code	price cat	£ each
18mm	1	10	204064	GENVL	See Pegler Valve Price List
22mm	1	10	204065	GENVL	See Pegler Valve Price List
28mm	1	5	204066	GENVL	See Pegler Valve Price List
35mm	1	5	204067	GENVL	See Pegler Valve Price List

PS500 brass chrome plated ball valve with lever, full bore. VSH XPress ends for copper/carbon steel/stainless steel tube



dimension	pack 1 qty	pack 2 qty	code	price cat	£ each
15mm	1	10	242301	GENVL	29.93
22mm	1	10	242303	GENVL	42.47
28mm	1	5	242304	GENVL	62.47
35mm	1	5	242305	GENVL	94.48
42mm	1	2	242306	GENVL	131.66
54mm	1	0	242307	GENVL	203.04

PS500T brass chrome plated ball valve with tee, full bore. VSH XPress ends for copper/carbon steel/stainless steel tube



dimension	pack 1 qty	pack 2 qty	code	price cat	£ each
15mm	1	10	243301	GENVL	29.93
22mm	1	10	243303	GENVL	45.44
28mm	1	5	243304	GENVL	62.47

by Pegler

valves

PSU500 brass chrome plated ball valve with lever, full bore. VSH XPress union x VSH XPress end for copper, carbon/stainless steel



dimension	pack 1 qty	pack 2 qty	code	price cat	£ each
15mm	1	10	243330	GENVL	35.02
22mm	1	5	243332	GENVL	61.59
28mm	1	5	243333	GENVL	90.24
35mm	1	4	243334	GENVL	124.95
42mm	1	0	243335	GENVL	177.02
54mm	1	0	243336	GENVL	239.49

PS550 DZR ball valve with lever, full bore. VSH XPress ends for copper/carbon steel/stainless steel tube



dimension	pack 1 qty	pack 2 qty	code	price cat	£ each
15mm	1	10	245220	GENVL	31.77
18mm	1	10	245221	GENVL	36.45
22mm	1	10	245222	GENVL	46.58
28mm	1	5	245223	GENVL	69.59
35mm	1	5	245224	GENVL	102.79
42mm	1	2	245225	GENVL	141.47
54mm	1	2	245226	GENVL	229.79

PSU500EL brass chrome plated ball valve with extended stem, full bore. VSH XPress union x VSH XPress end for copper, carbon/stainless steel



dimension	pack 1 qty	pack 2 qty	code	price cat	£ each
15mm	1	10	243340	GENVL	46.57
22mm	1	5	243342	GENVL	62.47
28mm	1	5	243343	GENVL	95.44
35mm	1	0	243344	GENVL	142.31
42mm	1	0	243345	GENVL	171.82
54mm	1	0	243346	GENVL	282.02

PS550T DZR ball valve with tee, full bore. VSH XPress ends for copper/carbon steel/stainless steel tube



dimension	pack 1 qty	pack 2 qty	code	price cat	£ each
15mm	1	10	245230	GENVL	33.21
22mm	1	10	245232	GENVL	46.58
28mm	1	5	245233	GENVL	69.61

valves

PS550EL full bore DZR lever ball valve. Extended stem. Blue lever handle, press ends. PN25



PSU550EL DZR brass ball valve with extended stem, full bore. VSH XPress union x VSH XPress end for copper, carbon/stainless steel



dimension	pack 1 qty	pack 2 qty	code	price cat	£ each
15mm	1	10	245300	GENVL	44.79
18mm	1	10	245301	GENVL	50.80
22mm	1	5	245302	GENVL	63.35
28mm	1	5	245303	GENVL	85.64
35mm	1	2	245304	GENVL	119.59
42mm	1	2	245305	GENVL	163.19
54mm	1	2	245306	GENVL	251.64

dimension	pack 1 qty	pack 2 qty	code	price cat	£ each
15mm	1	10	245320	GENVL	46.57
18mm	1	10	245321	GENVL	58.86
22mm	1	5	245322	GENVL	71.15
28mm	1	8	245323	GENVL	104.12
35mm	1	0	245324	GENVL	147.51
42mm	1	0	245325	GENVL	182.24
54mm	1	0	245326	GENVL	274.19

PSU550 DZR brass ball valve with lever, full bore. VSH XPress union x VSH XPress end for copper, carbon/stainless steel



dimension	pack 1 qty	pack 2 qty	code	price cat	£ each
15mm	1	10	245310	GENVL	36.57
18mm	1	10	245311	GENVL	42.46
22mm	1	5	245312	GENVL	56.39
28mm	1	5	245313	GENVL	97.82
35mm	1	4	245314	GENVL	133.14
42mm	1	0	245315	GENVL	168.50
54mm	1	0	245316	GENVL	259.48

by Pegler

valves

PBSEK stem extension kit (suitable for PB700 and PB500 ranges)



dimension	pack 1 qty	pack 2 qty	code	price cat	£ each
10	1	5	227030	GENVL	140.63

PDK padlock and key (suitable for PB700, PB500 and PB300 ranges)



dimension	pack 1 qty	pack 2 qty	code	price cat	£ each
3	1	25	258011	GENVL	47.21
4	1	10	258012	GENVL	60.78

PS1060A press-fit swing check valve. VSH XPress ends for copper/carbon steel/stainless steel tube



dimension	pack 1 qty	pack 2 qty	code	price cat	£ each
15mm	1	10	122301	GENVL	59.94
18mm	1	10	122302	GENVL	68.18
22mm	1	10	122303	GENVL	69.35
28mm	1	5	122304	GENVL	108.92
35mm	1	2	122305	GENVL	155.33
42mm	1	2	122306	GENVL	210.42
54mm	1	0	122307	GENVL	303.23

valves

PSU 1060A swing check valve bronze swing type check valve. VSH XPress union end x VSH XPress end for copper/carbon steel/stainless steel tube



PSU4426 DZR double check valve. VSH XPress end for copper/carbon steel/stainless steel tube x VSH XPress union outlet



dimension	pack 1 qty	pack 2 qty	code	price cat	£ each
15mm	1	10	122310	GENVL	69.54
22mm	1	5	122312	GENVL	80.41
28mm	1	5	122313	GENVL	121.65
35mm	1	2	122314	GENVL	163.31
42mm	1	0	122315	GENVL	211.70
54mm	1	0	122316	GENVL	326.22

dimension	pack 1 qty	pack 2 qty	code	price cat	£ each
15mm	1	10	42082	GENVL	79.83
18mm	1	10	42083	GENVL	84.54
22mm	1	5	42084	GENVL	124.32
28mm	1	5	42085	GENVL	167.07
35mm	1	5	42086	GENVL	338.39
42mm	1	5	42087	GENVL	423.75
54mm	1	2	42088	GENVL	674.21

PS4426 press-fit double check valve. VSH XPress ends for copper/carbon steel/stainless steel tube



PS913 bronze Y pattern strainer. VSH XPress ends for copper/carbon steel/stainless steel tube



dimension	pack 1 qty	pack 2 qty	code	price cat	£ each
15mm	1	5	42050	GENVL	65.94
22mm	1	5	42051	GENVL	110.32
28mm	1	5	42052	GENVL	156.75
35mm	1	0	42053	GENVL	329.70
42mm	1	2	42054	GENVL	409.92
54mm	1	0	42055	GENVL	659.43

dimension	pack 1 qty	pack 2 qty	code	price cat	£ each
15mm	1	10	15472	GENVL	63.60
18mm	1	10	15473	GENVL	64.99
22mm	1	10	15474	GENVL	81.43
28mm	1	5	15475	GENVL	103.40
35mm	1	5	15476	GENVL	159.78
42mm	1	2	15477	GENVL	212.12
54mm	1	2	15478	GENVL	330.69

by Pegler

valves

PSU913 bronze Y pattern strainer. VSH XPress inlet end x VSH XPress union outlet end for copper/carbon steel/stainless steel tube



dimension	pack 1 qty	pack 2 qty	code	price cat	£ each
15mm	1	10	15437	GENVL	66.52
22mm	1	5	15439	GENVL	89.37
28mm	1	2	15440	GENVL	123.28
35mm	1	0	15441	GENVL	177.73
42mm	1	0	15442	GENVL	230.88
54mm	1	0	15443	GENVL	368.14

PS4PRV pressure reducing valve. VSH XPress ends for copper/carbon steel/stainless steel tube. Adjustable 0.5 to 6.0 bar. Nickel plated



dimension	pack 1 qty	pack 2 qty	code	price cat	£ each
15mm	1	0	5A2070	GENVL	124.96
22mm	1	0	5A2072	GENVL	188.49
28mm	1	0	5A2073	GENVL	201.96
35mm	1	0	5A2074	GENVL	362.21
42mm	1	0	5A2075	GENVL	454.03
54mm	1	0	5A2076	GENVL	732.63

PS605 bronze circulation valve



dimension	pack 1 qty	pack 2 qty	code	price cat	£ each
15mm	1	0	16530	GENVL	235.29
22mm	1	0	16531	GENVL	272.23

valves

PSU4PRV pressure reducing valve. VSH XPress union outlet x VSH XPress end for copper/carbon steel/stainless steel tube. Nickel plated



dimension	pack 1 qty	pack 2 qty	code	price cat	£ each
15mm	1	0	5A2060	GENVL	135.01
22mm	1	0	5A2062	GENVL	202.51
28mm	1	0	5A2063	GENVL	226.06
35mm	1	0	5A2064	GENVL	398.28
42mm	1	0	5A2065	GENVL	502.15
54mm	1	0	5A2066	GENVL	812.81

CPT0059 small plastic handle with hexagon spigot



dimension	pack 1 qty	pack 2 qty	code	price cat	£ each
N/A	1	20	13712	BALLO	4.62

CPT0073 large plastic handle with hexagon spigot



dimension	pack 1 qty	pack 2 qty	code	price cat	£ each
N/A	1	0	13721	BALLO	8.46

Small plastic handle ERG with screw



dimension	pack 1 qty	pack 2 qty	code	price cat	£ each
N/A	20	0	13724	BALLO	4.62
N/A	1	20	13728	BALLO	4.62
N/A	1	20	13729	BALLO	4.62
N/A	1	20	13732	BALLO	4.62

Large plastic handle ERG with screw



dimension	pack 1 qty	pack 2 qty	code	price cat	£ each
N/A	1	20	13725	BALLO	8.46



valves - Fullflow stainless

XPR21000 stainless ball valve

(press x thread)



dimension	pack 1 qty	pack 2 qty	code	price cat	£ each
15xG1/2 (DN10) - Silver	1	25	2010001010	GENVL	51.65
18xG3/4 (DN15) - Silver	1	25	2015001010	GENVL	60.46
22xG3/4 (DN20) - Silver	1	15	2020001000	GENVL	73.95
28xG1 (DN25) - Silver	1	10	2025001000	GENVL	98.65
35xG1 1/4 (DN32) - Silver	1	10	2032001000	GENVL	140.97
42xG1 1/2 (DN40) - Silver	1	7	2040001000	GENVL	195.43
54xG2 (DN50) - Silver	1	5	2050001000	GENVL	274.76

XPR21401 stainless ball valve high

(press x nut)



dimension	pack 1 qty	pack 2 qty	code	price cat	£ each
15xG3/4 (DN10) - Silver	1	20	2010001411	GENVL	65.51
18xG3/4 (DN15) - Silver	1	15	2015001401	GENVL	72.32
22xG3/4 (DN20) - Silver	1	10	2020001411	GENVL	83.05
28xG1 1/4 (DN25) - Silver	1	8	2025001401	GENVL	95.00
35xG1 1/2 (DN32) - Silver	1	10	2032001401	GENVL	132.67
42xG1 3/4 (DN40) - Silver	1	5	2040001401	GENVL	197.50
54xG2 1/4 (DN50) - Silver	1	5	2050001401	GENVL	299.46

XPR20101 stainless ball valve high (press)



dimension	pack 1 qty	pack 2 qty	code	price cat	£ each
15 (DN10) - Silver	1	20	2010000101	GENVL	60.98
18 (DN15) - Silver	1	15	2015000101	GENVL	62.35
22 (DN20) - Silver	1	10	2020000101	GENVL	79.84
28 (DN25) - Silver	1	8	2025000101	GENVL	95.00
35 (DN32) - Silver	1	10	2032000101	GENVL	132.67
42 (DN40) - Silver	1	5	2040000101	GENVL	197.50
54 (DN50) - Silver	1	5	2050000101	GENVL	299.46

valves - Fullflow stainless

XPR21400 stainless ball valve

(press x nut)



dimension	pack 1 qty	pack 2 qty	code	price cat	£ each
15xG3/4 (DN10) - Silver	1	25	2010001410	GENVL	47.94
18xG3/4 (DN15) - Silver	1	25	2015001400	GENVL	54.21
22xG3/4 (DN20) - Silver	1	15	2020001410	GENVL	68.25
28xG1 1/4 (DN25) - Silver	1	10	2025001400	GENVL	98.65
35xG1 1/2 (DN32) - Silver	1	10	2032001400	GENVL	134.27
42xG1 3/4 (DN40) - Silver	1	7	2040001400	GENVL	169.94
54xG2 1/4 (DN50) - Silver	1	5	2050001400	GENVL	261.68

XPR21001 stainless ball valve high

(press x thread)



dimension	pack 1 qty	pack 2 qty	code	price cat	£ each
15xG1/2 (DN10) - Silver	1	20	2010001011	GENVL	74.55
18xG3/4 (DN15) - Silver	1	15	2015001011	GENVL	79.81
22xG3/4 (DN20) - Silver	1	10	2020001001	GENVL	89.44
28xG1 (DN25) - Silver	1	8	2025001001	GENVL	112.26
35xG1 1/4 (DN32) - Silver	1	10	2032001001	GENVL	156.81
42xG1 1/2 (DN40) - Silver	1	5	2040001001	GENVL	222.19
54xG2 (DN50) - Silver	1	5	2050001001	GENVL	329.93

XPR20100 stainless ball valve (press)



dimension	pack 1 qty	pack 2 qty	code	price cat	£ each
15 (DN10) - Silver	1	25	2010000100	GENVL	42.41
18 (DN15) - Silver	1	25	2015000100	GENVL	47.95
22 (DN20) - Silver	1	15	2020000100	GENVL	62.57
28 (DN25) - Silver	1	10	2025000100	GENVL	108.53
35 (DN32) - Silver	1	10	2032000100	GENVL	140.97
42 (DN40) - Silver	1	7	2040000100	GENVL	186.93
54 (DN50) - Silver	1	5	2050000100	GENVL	274.76

# TERMS AND CONDITIONS

## GENERAL CONDITIONS OF SALE

### 1. Definitions

1.1 **"Supplier"**: Aalberts Integrated Piping Systems Ltd (registered in England and Wales with company number 00401507) with its registered office at St. Catherine's Avenue, Doncaster, South Yorkshire, DN4 8DF United Kingdom.

1.2 **"Customer"**: The Party that concludes or wishes to conclude an Agreement with Supplier.

1.3 **"Agreement"**: an agreement or acknowledged purchase order for the delivery of movable items (products) and/or the performance of services by Supplier to the Customer.

1.4 **"VAT"**: value added tax or any equivalent tax chargeable in the UK.

### 2. Applicability of the General Conditions of Sale

2.1 These General Conditions of Sale shall apply to all Agreements and to all legal acts relating to the formation thereof.

2.2 These General Conditions of Sale shall also, after they have become part of any Agreement between Supplier and a Customer, form part of Agreements concluded later between Supplier and the Customer, even if at the formation of the agreements concluded later there has been no reference to the applicability of these General Conditions of Sale or if these General Conditions of Sale have not been submitted, such unless the Parties have expressly agreed otherwise in writing.

2.3 The applicability of the general terms and conditions of the Customer is explicitly rejected.

2.4 Supplier may amend these General Conditions of Sale. The amendments will take effect 30 calendar days after the date on which the amended conditions were sent to the Customer by Supplier.

2.5 In the event that one or more provisions of these General Conditions of Sale are void or may be declared void, the other provisions shall still remain in full force and effect. Supplier and the Customer then will consult to replace the provisions that are void and/or have been declared void, with new provisions, taking into consideration, to the extent possible, the purpose and intent of the original provision.

### 3. Offers and formation of Agreements

3.1 Agreements between the Parties will only be concluded after an order from the Customer has been confirmed in writing by Supplier, by a representative of Supplier duly authorized for this purpose, or because Supplier without reservation has performed the Agreement in a manner which is clear to the Customer. Verbal promises or agreements by or with its personnel shall only bind Supplier after and to the extent that Supplier has confirmed this in writing.

3.2 Confirmations sent by Supplier are considered to reflect the Agreement correctly and completely, barring evidence to the contrary.

3.3 Information provided by Supplier in the form of catalogues, pictures, drawings, weights, tests (samples), dimensions, technical specifications or shipping documents are for information purposes only and do not form part of the Agreement, unless expressly agreed in writing.

3.4 The Customer shall be responsible for ensuring the accuracy of the terms of its order.

3.5 Any additional agreements or amendments to the Agreement and/or commitments relating to the Agreement, made after formation of the Agreement, shall only bind Supplier when confirmed in writing by a representative of Supplier duly authorized for this purpose.

3.6 The Customer shall ensure that Supplier in time is provided with any information of which Supplier indicates that it is required, or of which the Customer in fairness should understand that it is required, for the provision of the products and/or the services. If the information necessary for the performance of the Agreement is not provided to Supplier in time, Supplier has the right to suspend performance of the Agreement and/or to charge the Customer the extra costs arising as a result of the delay, in accordance with the current rates.

3.7 If during performance of the Agreement it becomes evident that for a proper performance it will be necessary to amend or add to the Agreement, in whole or in part, the Parties will agree in a timely manner to try and amend the Agreement accordingly. Any amendments will be made in writing and signed by the Parties.

### 4. Subcontracting and transfer to third parties

Supplier has the right to subcontract its obligations vis-a-vis the Customer, in whole or in part. Supplier has the right to transfer the rights and obligations arising from the Agreement with the Customer to a third party/third parties.

### 5. Prices

5.1 The prices stated by Supplier are exclusive of VAT and exclusive of all other costs related to delivery, including, but not limited to insurance, overhead, packaging, transport and forwarding costs and delivery, administration, call-out and connection charges, unless the Parties have expressly agreed otherwise in writing.

5.2 Supplier has the right to adjust the prices when needed.

5.3 The Supplier may in its absolute discretion implement (and adjust) minimum order requirements by quantity and/or value.

### 6. Payment and Security

6.1 The Supplier has the right to invoice from the moment of formation of an Agreement. Unless expressly agreed otherwise in writing, payment shall be made within 30 calendar days of the invoice date. Payment must be made in GBP and without any set-off, discount and/or suspension.

6.2 In the event of late payment of an invoice, the Customer, without any notice of default, will be in default and all payment obligations of the Customer will immediately become due and payable, without prejudice to the other rights accruing to Supplier. This is also the case if the Customer files a petition for its own liquidation, if a petition for its liquidation is filed or if the Customer is declared to be in a state of liquidation or if the Customer applies for a moratorium, or if a moratorium for the Customer is applied for or if a moratorium is granted to the Customer.

6.3 In the event of late payment of an invoice, the Supplier may, without limiting its other rights:

- charge interest on such sums at 5% a year above the base rate of Lloyds Bank from time to time in force. Interest shall accrue on a daily basis and apply from the due date for payment until actual payment in full, whether before or after judgment;
- suspend any deliveries to the Customer in whole or in part; and/or
- cancel the Agreement.

6.4 Payments made by the Customer shall first of all serve to settle any payable interest and costs and subsequently the longest outstanding payable invoices, even if the Customer should state that the payment is related to a subsequently sent invoice.

6.5 At the time of conclusion of the Agreement or after conclusion of the Agreement, Supplier has the right to require advance payment from the Customer or proper security, in whole or in part, for the fulfilment of the obligations of the Customer under the Agreement, in the form of a bank guarantee or a reasonably equivalent security and Supplier has the right, until this security has been provided, to suspend its obligations towards the Customer.

### 7. Delivery and risk transfer

7.1 In the event that Supplier shows or provides a drawing, picture, model, design or other information, this shall only serve as an indication. The delivered products may vary from the displayed products.

7.2 Delivery will take place in accordance with the manner set out in the Agreement or, if not set out in the Agreement, FCA Incoterm® 2010.

7.3 The Customer may request a next working day delivery (Overnight Delivery) provided the request is made before 4.00pm Monday – Thursday and before 3.30pm on Fridays. The Supplier may (but is under no obligation to) agree to an Overnight Delivery request and shall charge the Customer for any increased costs incurred as a result of the Overnight Delivery.

7.4 The Customer shall check the delivered products within 5 working days of delivery, for any shortages or damage, or shall perform this check or have this check performed after notification by Supplier that the goods are at the disposal of the Customer. In the event that the goods are damaged the Customer must notify the Supplier immediately.

7.5 In the event that up to and including 2% more or less than the quantity of products ordered are delivered, the Customer shall not be entitled to reject the Order nor withhold or set off any payment to the Supplier as a result.

7.6 In the event that over 2% more or less than the quantity of products ordered are delivered, the Customer must notify the Supplier of this in writing within 5 working days of delivery and

the Supplier may, at its absolute discretion, credit the Customer for the shortage or invoice the Customer for the excess. The Customer shall not be entitled to reject the Order nor withhold or set off any payment to the Supplier as a result.

7.7 All costs related to inspections and re-inspections shall be borne by the Customer.

7.8 Subject to article 12, the Customer shall not return any goods to the Supplier without the Supplier's prior written consent or other agreement in writing.

### 8. Partial delivery

Supplier reserves the right to deliver in parts (partial deliveries) which may be invoiced separately. In case of a partial delivery, the Customer shall also pay in accordance with the provision of article 6 of these General Conditions of Sale.

### 9. Delivery date

9.1 Indication of the delivery date by Supplier is an approximate estimate only and is not considered a final deadline unless expressly agreed otherwise.

9.2 Supplier is in no way liable for exceeding the delivery date, by any cause whatsoever. Exceeding the delivery date does not make Supplier liable to pay any compensation and does not give the Customer the right to terminate the Agreement and/or to refuse to take delivery and/or to invoke suspension.

### 10. Force majeure

10.1 Force majeure shall be taken to mean any event or sequence of events beyond the Supplier's reasonable control preventing or delaying it from performing its obligations under the Agreement including an act of God, fire, flood, lightning, earthquake or other natural disaster; war, riot or civil unrest; interruption or failure of supplies of power, fuel, water, transport, equipment or telecommunications service; damage to or destruction of premises or material required for performance of the Agreement; strike, lockout or boycott or other industrial action including strikes or other industrial disputes involving the Supplier's or its suppliers workforce.

10.2 During a period of force majeure, the obligations to deliver and other obligations of Supplier will be suspended. If the period, in which performance of Supplier's obligations is no longer possible due to force majeure, should last longer than six calendar months, both Parties shall have the right to terminate the Agreement, in whole or in part, without any obligation to pay damages or to cancel the agreement.

10.3 Supplier has the right to claim payment for the work already carried out in the performance of the relevant Agreement, before the events causing the force majeure became evident.

10.4 Supplier also has the right to invoke force majeure if the event causing the force majeure occurs after Supplier should already have delivered the performance.

### 11. Retention of Title

11.1 Supplier remains the owner of all goods delivered to the Customer until all claims Supplier has against the Customer, for whatever reason, shall be paid, including interest and costs.

11.2 As long as the ownership has not been transferred to the Customer, the Customer may not pledge the goods or grant any rights to the goods to any third party, subject to the other provisions of this article.

11.3 The Customer shall store the goods delivered under retention of title separately with the required care and identifiable as the property of Supplier and the Customer shall insure the goods against the usual risks.

11.4 The Customer is authorized to sell and transfer the goods delivered under retention of title to third parties, acting in the ordinary course of the firm's business. When selling on credit the Customer shall require from its customers that the goods shall remain subject to retention of title in accordance with the provisions of this article.

11.5 Where applicable, Supplier shall have the right to unlimited access to the goods under retention of title. The Customer shall provide Supplier with all the assistance needed to exercise the retention of title included in this article by taking back these goods, including carrying out any dismantling required, and (unless otherwise agreed in writing) the Supplier shall be entitled to charge the Customer a reasonable restocking fee.

### 12. Warranty

12.1 With due observance of the following restrictions and the other provisions of these General Conditions of Sale, Supplier warrants that the goods delivered shall:

- conform in all material respects to their specifications; and
- be free from material defects in design, material and workmanship, during the period as described in the product literature (unless otherwise agreed by the Supplier in writing), commencing at the time of delivery of the goods to the Customer. When providing the services, Supplier warrants that when performing these services due care will be taken.

12.2 If the Customer alleges that some or all of the goods delivered do not conform with the warranty in article 12.1, the Customer must give the Supplier a reasonable opportunity to examine the allegedly defective goods and deliver them to the Supplier.

12.3 If the Customer invokes any warranty provision of the Agreement on valid grounds, Supplier, at its option and without prejudice to the other provisions of these conditions, shall either proceed to replace the delivered goods, or to terminate (in whole or in part) the Agreement in combination with a pro-rata refund of the payment already made by the Customer, without any obligation to pay damages. Costs of materials, call-out charges, installation costs and such like are explicitly excluded from the warranty.

12.4 Without prejudice to the provisions of this article 12, the agreed upon warranty obligations will lapse if:

- the delivered goods have not been put into operation by Supplier or a qualified firm of installers in accordance with the accompanying installation conditions and/or instructions;
- the installer engaged has not complied with the applicable legislation and regulations;
- the Customer has used the delivered goods for a purpose other than the designated use;
- the Customer (in Supplier's reasonable opinion) has handled, used or maintained the delivered goods in an improper manner and/or has failed to comply with the Supplier's instructions in relation to the goods;
- there is normal wear and tear, wilful damage or negligence;
- defects in the delivered goods are the result of any government regulations relating to the nature or the quality of the materials used;
- the Customer fails to fulfil its obligations towards Supplier;
- the Customer makes a change or changes to, or repairs, the delivered goods or has changes or repairs made by third parties, without prior written permission from Supplier;
- to the extent caused by the Supplier following any specification or requirement of the Customer in relation to the goods;
- the defects in the delivered goods are otherwise, in whole or in part, attributable to the Customer.

12.4 Any labour costs, costs of disassembly, shipment and transport will be for the account and risk of the Customer. Products or parts of products, to be repaired or replaced by Supplier, shall be sent postage paid to Supplier by the Customer, after obtaining Supplier's written permission. Products that have been returned and are found not to be defective, will be returned to the Customer for the account of the Customer and Supplier's costs for investigating the complaint shall also be charged to the Customer.

12.5 In case of replacement or repair of the goods delivered the original warranty period will not be extended and there will not be a new warranty period.

12.6 A warranty claim does not give the Customer any right to suspend any obligation towards Supplier, including the obligation to pay any invoice from the Supplier.

12.7 In the event of sale of finished goods – goods purchased by Supplier and delivered unprocessed – the goods will be sold in the condition they are in. In respect thereof, Supplier does not provide any guarantee and does not accept any liability, unless expressly agreed otherwise in writing and then only if, and to the extent that, the relevant manufacturer/supplier provides guarantee and only to the extent the manufacturer/supplier provides guarantee.

12.8 If in the context of the performance of the Agreement by Supplier parts are outsourced to third parties under stricter conditions than these General Conditions of Sale, Supplier may enforce, for the outsourced part of the Agreement, the same stricter conditions against the Customer.

12.9 Except as set out in this article 12, the Supplier shall have no liability to the Customer in respect of the goods' failure to comply with

the warranty set out in article 12.1.

12.10 All warranties and conditions (including the conditions implied by ss 13-15 of the Sale of Goods Act 1979), whether express or implied by statute, common law or otherwise are excluded to the extent permitted by law.

### 13. Complaints

13.1 Complaints shall be submitted in writing and as soon as possible, but no later than, and with due regard to, the period referred to in article 7.4, within 5 working days of delivery of the products (or in the case of latent defects within a reasonable time of discovery of the defects or when the defects reasonably should have been discovered) specifying the nature and the basis of the complaint/complaints.

13.2 Complaints about the services provided shall be reported in writing to Supplier by the Customer, within 5 working days of discovery, but no later than 10 working days after completion of the relevant services.

13.3 When the abovementioned period has expired, the Customer is deemed to have approved the delivery. In that case, complaints will no longer be handled by Supplier.

### 14. Liability

14.1 Nothing in this Agreement shall limit or exclude the Supplier's liability for:

(a) death or personal injury caused by its negligence, or the negligence of its employees, agents or subcontractors (if applicable);

(b) fraud or fraudulent misrepresentation; and  
(c) breach of the terms implied by section 12 of the Sale of Goods Act 1979.

14.2 The Supplier shall not be liable for indirect loss and consequential damage incurred by the Customer as a result of an attributable failure by Supplier to fulfil the obligations arising from any Agreement, including, but expressly not limited to: business interruption, loss of profits, lost sales, immaterial damage, lost opportunities and defamation.

14.3 Supplier's liability for direct damage incurred by the Customer which is proven to be the result or is related to an attributable failure on the part of Supplier to fulfil its obligations towards the Customer under an Agreement concluded with the Customer, is limited per event or series of related events with a common cause, to the price of the products.

14.4 No failure or delay by a party to exercise any right or remedy provided under this agreement or by law shall constitute a waiver of that or any other right or remedy, nor shall it prevent or restrict the further exercise of that or any other right or remedy. No single or partial exercise of such right or remedy shall prevent or restrict the further exercise of that or any other right or remedy.

### 15. "Product recall"

15.1 The Customer shall act in respect of the products delivered (or resold) by Supplier, in accordance with the applicable requirements of product safety.

15.2 The Customer shall cooperate as requested by Supplier if Supplier, whether or not on the basis of European or English laws or regulations, wishes to proceed with a measure in the field of product safety, for instance a public warning or a product recall.

15.3 The Customer shall not proceed to take a measure in the field of product safety, for instance a public warning, a product recall or informing a competent authority, without the prior written consent of Supplier.

15.4 In order to enable any public warning or product recall, the Customer shall always keep records of the amounts of products delivered and also to whom and when these deliveries of the products delivered by Supplier were made.

### 16. Intellectual property rights

16.1 All intellectual property rights (including, inter alia, copyrights and design rights both registered and unregistered) to drawings, photographs, catalogues, models, designs, calculations and the like made available to the Customer by Supplier (hereinafter referred to as: "the Materials") will always be vested in Supplier and will never be transferred to the Customer. Where these General Conditions of Sale refer to "deliver" or conjugations of this word this cannot be taken to mean that transfer of intellectual property rights is intended. The Customer is only granted a non-exclusive, non-transferable and revocable right to use the Materials in an unaltered form and for its own use, which right furthermore does not exceed the specifically agreed use and/or the use that is reasonably required within the context of the performance of the Agreement.

16.2 If by the performance of any Agreement intellectual property rights (including copyrights and design rights, whether or not registered) are nevertheless transferred to the Customer, the Customer shall at the first

request to this effect from the Supplier undertake everything necessary to transfer these rights back to the Supplier and to secure these rights.

16.3 Without prejudice to the generality of this article, it is in particular expressly not allowed for the Customer to copy and/or edit the content (including photographs) of catalogues made available by Supplier. If and insofar as Supplier put digital photographs at the disposal of the Customer, the use of these photographs is only allowed for the purposes specifically specified by Supplier and the use hereof on any website is prohibited unless Supplier has explicitly granted its prior written consent. Supplier has the right to withdraw its permission to use the Materials at any time, with immediate effect, without becoming liable towards the Customer and in this event the Customer shall immediately return the Materials to Supplier.

16.4 The Customer is not allowed to place its own photographs or drawings of products originating from Supplier on the Internet.

16.5 If and insofar as it is ascertained at law that the products delivered to the Customer by Supplier infringe any intellectual property rights of any third parties, Supplier will take back the products against reimbursement of the purchase price paid by the Customer. Said reimbursement of the purchase price is the sole remedy of the Customer in this respect.

16.6 To the extent that the goods are to be manufactured in accordance with a specification supplied by the Customer, the Customer shall indemnify the Supplier against all liabilities, costs, expenses, damages and losses (including any direct, indirect or consequential losses, loss of profit, loss of reputation and all interest, penalties and legal and other reasonable professional costs and expenses) suffered or incurred by the Supplier in connection with any claim made against the Supplier for actual or alleged infringement of a third party's intellectual property rights arising out of or in connection with the Supplier's use of the Customer's specification.

### 17. Termination and cancellation

17.1 Without affecting any other right or remedy available to it, Supplier has the right to terminate or cancel the Agreement concluded with the Customer, without any obligation to pay damages, if:

a. the Customer suspends, or threatens to suspend, payment of its debts or is unable to pay its debts as they fall due or admits inability to pay its debts or is deemed unable to pay its debts within the meaning of section 123 of the Insolvency Act 1986 as if the words "it is proved to the satisfaction of the court" did not appear in sections 123(1)(e) or 123(2);

b. the Customer is declared to be in liquidation, files for a winding-up petition or if a winding-up petition is filed for, a notice is given, a resolution is passed, or an order is made, for or in connection with the winding up of the Customer;

c. the Customer begins negotiations with all or any class of its creditors with a view to rescheduling any of its debts, or makes a proposal for or enters into any compromise or arrangement with any of its creditors other than for the sole purpose of a scheme for a solvent amalgamation or solvent reconstruction;

d. an application is made to court, or an order is made, for the appointment of an administrator or if a notice of intention to appoint an administrator is given or if an administrator is appointed over the Customer;

e. the holder of a qualifying floating charge over the assets of the Customer has become entitled to appoint or has appointed an administrative receiver;

f. a person becomes entitled to appoint a receiver over all or any of the assets of the Customer or a receiver is appointed over all or any of the assets of the Customer;

g. a creditor or encumbrancer of the other party attaches or takes possession of, or a distress, execution, sequestration or other such process is levied or enforced on or sued against, the whole or any part of the Customer's assets and such attachment or process is not discharged within 14 days;

h. any event occurs, or proceeding is taken, with respect to the Customer in any jurisdiction to which it is subject that has an effect equivalent or similar to any of the events mentioned in article 18.1(a) to (g) inclusive;

i. a party obtains control of the Customer other than the party at the time of conclusion of the Agreement;

j. the Customer due to force majeure is unable to fulfil its obligations towards Supplier and the situation of force majeure lasts for at least 20 calendar days;

k. The Customer culpably fails to fulfil its obligations arising from the Agreement without Supplier being obliged to send any notice of default.

17.2 The Customer shall fulfil all (financial) obligations to the Supplier notwithstanding termination.

### 18. No assignment clause and prohibition on pledging

18.1 The Customer does not have the right to encumber or transfer any rights or obligations under the Agreement without the prior written consent of Supplier.

18.2 Third party rights. No one other than a party to this Contract and their permitted assignees shall have any right to enforce any of its terms.

### 19. Confidentiality

19.1 The Customer guarantees that it will take measures to ensure confidentiality towards third parties regarding all data and information about Suppliers organisation/organisations, customers, procedures, files and products, etc (Confidential Information), of which the Customer becomes aware, relating to all data and information in any connection to Supplier, except when the data or information is clearly not of a secret or confidential nature, or through no action of the Customer have already become common knowledge or in case a legal provision, a judicial authority or a competent government agency prescribes it. In any case, the content of the Agreement and everything Supplier indicates or has indicated as being secret or confidential will be considered Confidential Information. The Customer guarantees that the employees involved in the performance of the work will maintain confidentiality.

19.2 With respect to any Confidential Information originating from Supplier held by the Customer in any form whatsoever or on any information carrier or to any Confidential Information provided to the Customer, the Customer undertakes to:

a. keep the Confidential Information no longer than reasonably required for the fulfilment of the agreed obligations and to make this Confidential Information (including any copies made) again available to Supplier, immediately after those obligations have been fully fulfilled or to destroy the Confidential Information after obtaining permission from Supplier that provided this information;

b. to make the Confidential Information available only to personnel and/or third parties working for them for which it is required that they are aware of this Confidential Information. The Confidential Information is only provided to third parties if they have signed a nondisclosure agreement. The personnel and/or third parties with access to the Confidential Information will be informed of this obligation of confidentiality imposed on this Information. The necessary steps are taken to ensure further confidentiality.

19.3. Confidentiality will remain in force even after termination of the Agreement.

19.4. The Customer will not go public with substantive information on the Agreement without the prior written consent of Supplier. The Customer will obtain the Supplier's written consent in the event that it wants to use the Supplier's name for publicity purposes.

19.5. Within 10 (in words: ten) working days of the request for the return or destruction of Confidential information, the Party providing the information will return any (copies of the) Confidential Information to the Party receiving the information or the Party receiving this information will destroy this information. If so requested, the Party receiving the information will declare in writing that all the acts mentioned above have been performed. For clarification of this article, "documents" will be taken to mean all carriers, including paper, diskettes, tapes, CD-ROMs, DVD-ROMs and any other options to store information.

### 20. Governance and integrity

20.1 The Customer shall comply with all laws, enactments, regulations, regulatory policies, guidelines and industry codes applicable to it and shall maintain such authorisations and all other approvals, permits and authorities as are required from time to time to perform its obligations under or in connection with the Agreement.

20.2 Without prejudice to the generality of article 20.1, each party shall comply with the Bribery Act 2010 or any similar or equivalent legislation in any other relevant jurisdiction, including ensuring that it has in place adequate procedures to prevent bribery and use all reasonable endeavours to ensure that:

a. all of that party's personnel;  
b. all others associated with that party; and  
c. all of that party's subcontractors, involved in performing the Agreement so comply.

20.3 Neither party shall make or receive any bribe (as defined in the Bribery Act 2010) or other improper payment or allow any such to be made or received on its behalf, either in the United Kingdom or elsewhere and shall implement and maintain adequate procedures to ensure that such bribes or payments are not made or received directly or indirectly on its behalf.

20.4 The Customer undertakes, warrants and represents that:

a. neither the Customer nor any of its officers, employees, agents or subcontractors has:  
(1) committed an offence under the Modern Slavery Act 2015 (an "MSA Offence");  
(2) been notified that it is subject to an investigation relating to an alleged MSA Offence or prosecution under the Modern Slavery Act 2015; or  
(3) is aware if any circumstances within its supply chain that could give rise to an investigation relating to an alleged MSA Offence or prosecution under the Modern Slavery Act 2015; and  
b. it shall comply with the Modern Slavery Act 2015.

### 21. Entire agreement

The parties agree that the Agreement constitutes the entire agreement between them and supersedes all previous agreements, understandings and arrangements between them, whether in writing or oral in respect of its subject matter. Each party acknowledges that it has not entered into the Contract in reliance on, and shall have no remedies in respect of, any representation or warranty that is not expressly set out in the Contract. No party shall have any claim for innocent or negligent misrepresentation on the basis of any statement in the Contract. Nothing in these Conditions purports to limit or exclude any liability for fraud.

### 22. Governing law and disputes

22.1 The Agreement and any dispute or claim (including non-contractual disputes or claims) arising out of or in connection with or its subject matter or formation, shall be governed by and construed in accordance with the law of England and Wales.

22.2 Each party irrevocably agrees that the courts of England and Wales shall have exclusive jurisdiction to settle any dispute or claim (including non-contractual disputes or claims) arising out of or in connection with this Agreement or its subject matter or formation.

22.3 Notwithstanding article 22.2, the Supplier shall have the right to take, and shall not be prevented from taking, proceedings (including seeking interim or injunctive remedies) against the Customer to settle any dispute or claim arising out of, or in connection with, the Agreement, its subject matter or formation (including non-contractual disputes or claims) in any other court of competent jurisdiction and that the Supplier may take such proceedings in any number of jurisdictions, where concurrently or not, to the extent permitted by law.

### 23. Translation

In case of discrepancies between these General Conditions of Sale in the English language and translations thereof, the English version shall be binding.

## more information?

---

For a complete and up-to-date product range and our additional services, visit: [www.pegler.co.uk](http://www.pegler.co.uk)

Would you like to make an appointment to meet an account manager in your region or receive advice and support from one of our experts? Please contact:

**Aalberts Integrated Piping Systems Ltd**

**tel:** +44 (0) 1302 560 560

**email:** [info.uk@aalberts-ips.com](mailto:info.uk@aalberts-ips.com)

[www.pegler.co.uk](http://www.pegler.co.uk)

*All brand names and logo styles are registered trademarks.  
Maintaining a policy in this publication without prior notice.*

